

G2 PUNTO ARANCIO

SHUT-OFF VALVE WITH PUNTO ARANCIO® PRESSURE FITTING AND KEY CLICK® SAFETY HANDLE

Data sheet
MCTW028.00 - 05/2019



- G2 PUNTO ARANCIO is a DVGW certified ball valve for gas meters.
- The compact handle houses:
 - the Punto Arancio technology for easy and fast system testing.
 - the Key Click technology, which makes the valve padlockable.
- The valve can be locked in the closed position with the user key.
- Gas suppliers can intervene in the event of arrears using the skeleton key.
- Wide range; version with and without swivel nut, straight, front or side outlet.
- The meter bracket makes it possible to construct all necessary configurations.



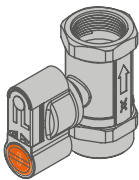
Material				
Body	Finish	Seats	Balls	Handle
Brass CW617	Sand Blasted Brass	PTFE	Brass CW617	Polyamide

TECHNICAL SPECIFICATIONS

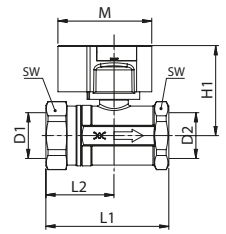
Reference standards	Working pressure	Working temperature	High temperature resistance	Application
DIN EN 331 - UNI 7129-2015 DVGW G 5614 (version UNIPRESS®)	MOP 5 (5 bar)	-20 °C +60 °C	HTB 650 °C for 30' (DIN EN331 B0.1)	For all types of gas as specified in EN 437 and DWG G260/1 (Methane, Butane, Propane)

VERSIONS AND CODES: THREADED VALVE FOR DUAL-PIPE GAS METER

Straight valve – F/F version*

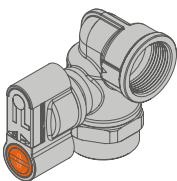


 Valves with provision for "KEY CLICK" locks (OPTIONAL)

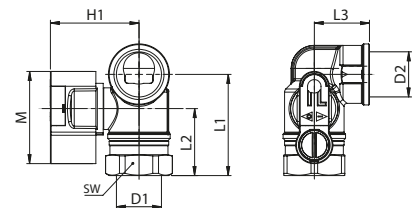


Code	DN	D1	D2	L1	L2	H1	M	SW	Pack
G243010000	20	Rp3/4"	Rp3/4"	76	40	60	62	41	10
G243010100	25	Rp1"	Rp1"	82	45	60	62	41	10

90° right-hand valve – F/F version*



 Valves with provision for "KEY CLICK" locks (OPTIONAL)



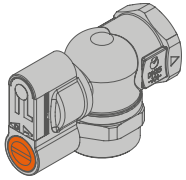
Code	DN	D1	D2	L1	L2	H1	M	SW	Pack
G243110100	25	Rp1"	Rp1"	68	45	60	62	41	10

TECO Srl
Via Sandro Pertini, 39/41 - Zona industriale Noccole, 25050 Provaglio d'Iseo (BS)

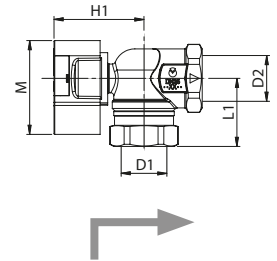
+39 030 6850510 | +39 030 6850555
info@tecosrl.it | www.tecosrl.it



90° front valve – F/F version*



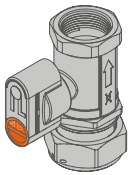
 Valves with provision for "KEY CLICK" locks (OPTIONAL)




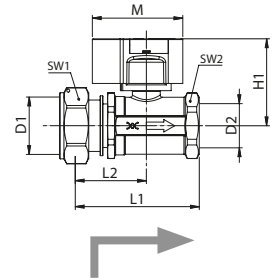
Code	DN	D1	D2	L1	H1	H2	M	SW	Pack
G243110300	20	Rp3/4"	Rp3/4"	45	60	39	62	41	10
G243110200	25	Rp1"	Rp1"	45	60	39	62	41	10

VERSIONS AND CODES: VALVE WITH SWIVEL NUT FOR DUAL-PIPE GAS METER

Straight valve – F/swivel nut version*

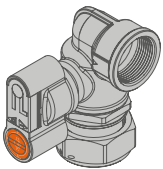



 Valves with provision for "KEY CLICK" locks (OPTIONAL)

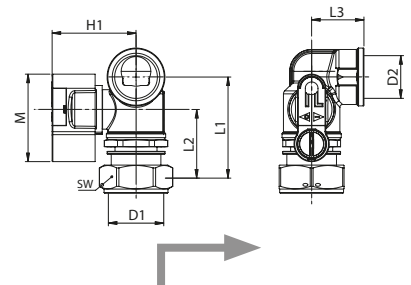


Code	DN	D1	D2	L1	L2	H1	M	SW1	SW2	Pack
G2430B0100	20	G1"1/4	Rp3/4"	85	49	60	62	46	32	10
G2430B0200	25	G1"1/4	Rp1"	85	49	60	62	46	41	10
G2430B0300	20	G1"	Rp3/4"	85	49	60	62	38	32	10
G2430B0400	25	G1"	Rp1"	85	49	60	62	38	41	10

90° right-hand valve – F/swivel nut version*

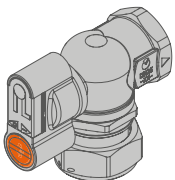


 Valves with provision for "KEY CLICK" locks (OPTIONAL)

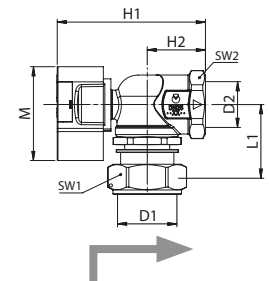


Code	DN	D1	D2	L1	L2	H1	M	SW	Pack
G2431B0200	25	G1"1/4	Rp1"	72	49	60	62	46	10
G2431B0400	25	G1"	Rp1"	72	49	60	62	38	10

90° front valve – F/swivel nut version*



 Valves with provision for "KEY CLICK" locks (OPTIONAL)

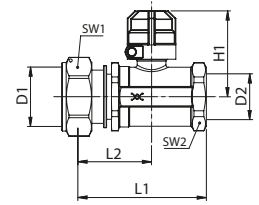
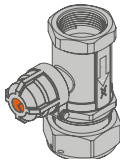


Code	DN	D1	D2	L1	H1	H2	M	SW1	SW2	Pack
G2431B0300	25	G1"1/4	Rp1"	49	60	39	62	46	41	10
G2431B0500	25	G1"	Rp1"	49	60	39	62	38	41	10

* Includes: Pressure plug. Does not Include: pressure plug adapter KP1000 and Key Click Locking device.

VERSIONS AND CODES: VALVE WITH SEALABLE CAP FOR DUAL-PIPE GAS METER

Straight valve with sealable cap – F/swivel nut version

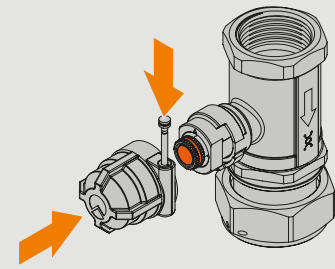


Code	DN	D1	D2	L1	L2	H1	SW1	SW2	Pack
G2C30B0100	20	G1"1/4	Rp3/4"	85	49	57	46	32	10
G2C30B0200	25	G1"1/4	Rp1"	85	49	57	46	41	10
G2C30B0400	25	G1"	Rp1"	87	51	57	37	41	10

SEALABLE FASTEC® SEALABLE

100% SECURE PROTECTION

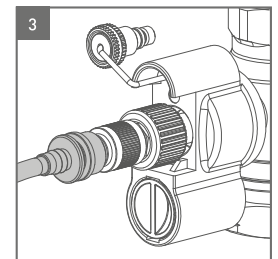
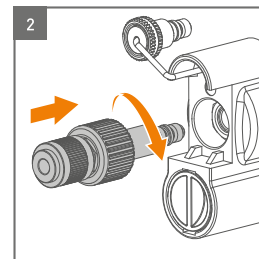
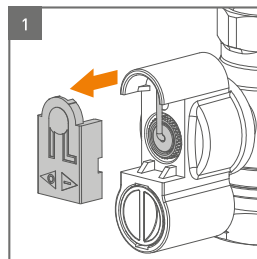
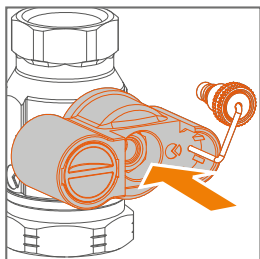
The FASTEC® sealable cap (patented) is easy to apply and guarantees secure protection against tampering with the valve.



OPERATION AND TECHNOLOGIES

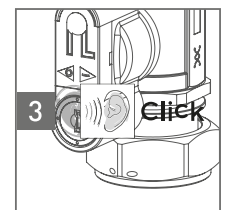
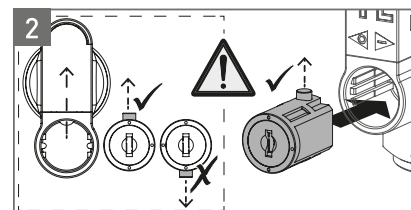
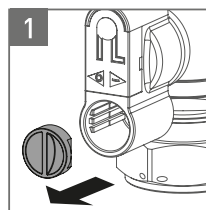


THE PRESSURE FITTING ALWAYS ON THE FRONT MAKES THE OPERATION SIMPLE



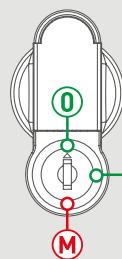
KEY CLICK

KEY CLICK® quickly transforms your valve with a security handle. The lock can be integrated with a click.



HANDLE WITH SECURITY LOCK

UNI7129-1:2015 4.1 standard requires the use of a valve that has a handle with security key when it can also be accessed by unauthorised people.



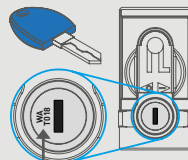
OPERATION

- O** The key can be removed. The valve can be closed even without the key.
- U** The key cannot be removed. The valve can be opened.
- M** Function only available with the SKELETON KEY: prevents use of the user key.

SKELETON KEY SCHEME

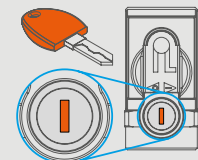
The skeleton key is available in two versions, depending on the type of lock to be unlocked/locked. The locks have guards (retractable dirt protection cap) of different colours to identify the lock type.

BLACK OR YELLOW guard
Blue key



Marked code

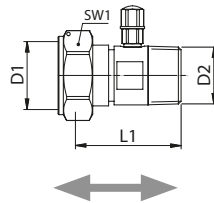
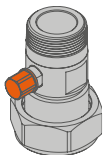
ORANGE guard
Orange key



Skeleton keys (passpartout) are only supplied to authorised personnel.

FITTING FOR METER BRACKET

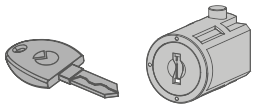
Punto arancio® fitting – F/swivel nut version



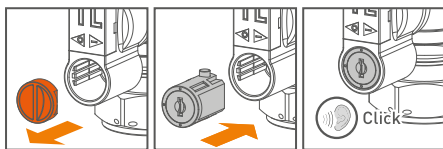
Code	D1	D2	L1	SW	Pack
R2130B0100	G1"1/4	R1"	61	46	10

ACCESSORIES

KEY CLICK® lock and key

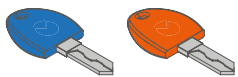


KEY CLICK® quickly transforms your valve with a security handle. The lock can be integrated with a "click".



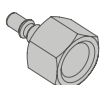
Code	Pack
KA00KC0001	5

Skeleton key (PASSEPARTOUT)

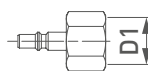


Code	Colours	Pack
KY2000	Blue	1
KY3000	Orange	1

Quick coupling

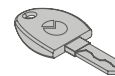


For PUNTO ARANCIO® pressure fitting kit Connection: thread F-1/4"

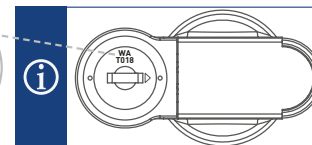


Code	D1	Pack
KP2000	1/4	1

Key for security lock



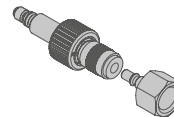
Replacement key for handle with security lock.



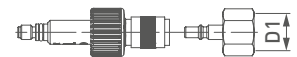
When ordering, specify the code marked on the lock

Code	Pack
KY1000	1

Kit for pressure fitting

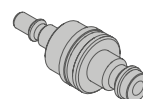


Punto Arancio® pressure fitting and F 1/4" threaded quick coupling

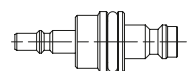


Code	D1	Pack
KP1000	1/4	5

"TESTO" - "WÖHLER" quick coupling

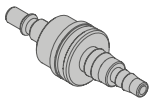


Compatible with the PUNTO ARANCIO® pressure fitting kit

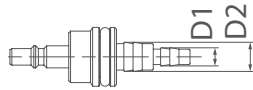


Code	Pack
KP2001	1

“SEITRON” quick coupling

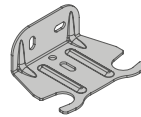


Compatible with the PUNTO ARANCIO® pressure fitting kit



Code	D1	D2	Pack
KP2002	Ø4	Ø7	1

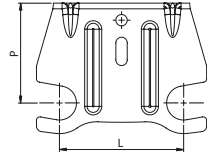
GI-TEC gas meter bracket



Compatible with valves and fittings with swivel nut and PUNTO ARANCIO® pressure fitting



Brackets with a special distance between centres are available on request.



Code	L	p	Pack
KM12000100	110	88	1
KM22000100	250	105	1

ITEM SPECIFICATIONS

G2 Punto Arancio: gas meter valve with pressure fitting

Ball valve for gas meters, certified in accordance with the EN 331 standard, compact handle that houses the following at the front:

- Punto Arancio pressure fitting with double anti-leak safety valve
- Key Click technology to make the valve padlockable

Threads comply with the EN 10226-1 - ISO 228-1 standards.

Straight, right-angle or elbow versions, with or without swivel nut for direct connection to the meter. Working temperature -20°C + 60°C.

MOP 5.

High-temperature resistance HTB 650° for 30'.

