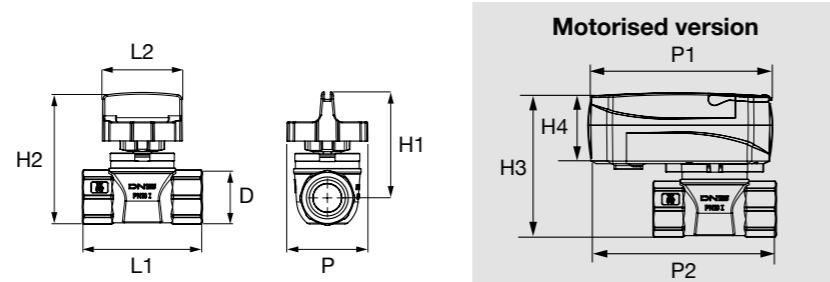


PRODUCT RANGE

T4 E-READY - TOP ENTRY BALL VALVE WITH OPTIONAL REMOTE CONTROL

Fastec® fittings can be found in the ranges of domestic and heating water system manufacturers



	Code	DN	D	L1	L2	H1	H2	P	Pack	P1	P2	H3	H4
	T4P3271100	15	F13F	59	42	54	68	42	5	95	94	73	36
	T4P4271100	20	F14F	72	42	58	75	42	5	95	101	80	36
	T4P3211100	15	FF 1/2"	63	42	55	70	42	5	95	96	74	36
	T4P4211100	20	FF 3/4"	70	42	58	75	42	5	95	100	80	36

Does not include:
Fittings, motor and cable

Features

- Top Entry® with removable ball and brass body, compliant with DIN EN 13828 and with light Soft Turn® control.
- Closing and opening by manual handle or motorised with an **E104** motor.

Applications

- For hot and cold drinking water
- Domestic water systems
- Heating

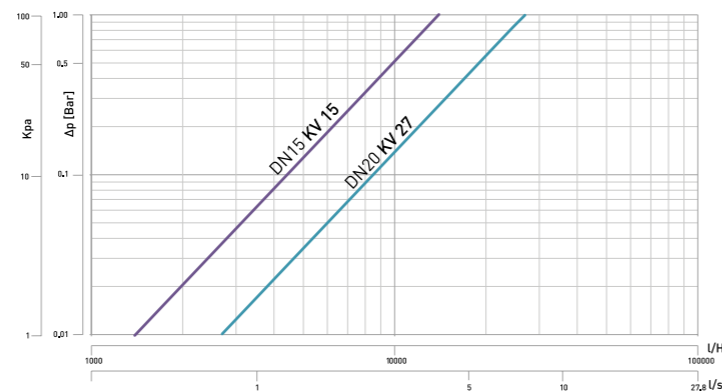
MATERIAL

Body	CW617N Brass
Top-Entry ball	Engineered polymer

TECHNICAL DATA

Connections	FASTEC®
Working pressure	PN10 (10 bar)
Temperature	0°C + 95°C
Standard and certification	DIN EN 13828 - (KTW-W270) DVGW W 570-1

Flow loss diagram



T4 E-READY



Item specifications:

T4 E-READY Shut-off valve with optional motor

Top Entry shut-off valve with Top Entry removable ball and full flow that complies with the DIN EN13828 standard. Engineered polymer ball and Soft Turn anti-jamming seals for light control. Brass body. Operating pin compatible with mounting the ON-OFF electric motor with auxiliary microswitch in the version with open signal or in the version with safety feedback when the valve is closed.

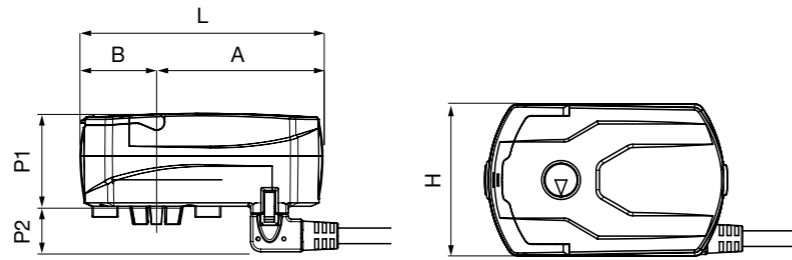
FASTEC® ADAPTERS

Image	Design	Code	Description	D1	D2	Pack
		RF12210100	Elbow fitting	F13M	F13F	10
		RF22220100	Elbow fitting	F14M	F14F	10
		RF12210200	Female elbow fitting	F13M	F13F	10
		RF22220200	Female elbow fitting	F14M	F14F	10
		RF12310100	"T" fitting	F13M	F13F	10
		RF22320100	"T" fitting	F14M	F14F	10
		RF12310200	Female "T" fitting	F13M	F13F	10
		RF22320200	Female "T" fitting	F14M	F14F	10
		KA00F10001	TWIN 1 fitting	F13M	F13F	10
		KA00F10002	TWIN 2 fitting	F13M	F13F	10
		KA00K00003	1/2" male threaded fitting	F13M	F13F	10
		KA00K00009	3/4" male threaded fitting	F14M	F14F	10
		KA00K00004	3/4" Eurocono fitting	F13M	F13F	10
		KA00K00002	Plug	F13M	F13F	10
		KA00K00010	Plug	F14M	F14F	10

E-READY ACCESSORIES AND SPARE PARTS

Image	Design	Code	Description	DN	Pack
	-	KA00K40011	E4 handle kit	-	1
		KRTCE415000	E4 Teco Control spare parts kit	15	1
		KRTCE420000	E4 Teco Control spare parts kit	20	1

E100 SERIES
E104 - ELECTRIC MOTOR



Appl.	Code	Voltage	Auxiliary microswitch	L	H	P1	P2	A	B	Pack
☰	E1045100	230V	Switching when closed	95	59	36	18	65	30	1
☰	E1046100	24V	Switching when closed	95	59	36	18	65	30	1
☀	E1042100	230V	Switching when open	95	59	36	18	65	30	1
☀	E1044100	24V	Switching when open	95	59	36	18	65	30	1

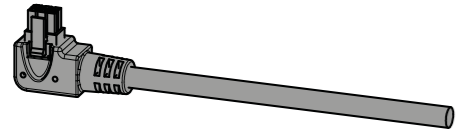
Includes:
Cable (1 m)

Features

- Energy-efficient electric stepper motor.
- Four different models available to meet different needs during use (domestic or heating systems / connection to home automation system or switch operation).
- Fast assembly and disassembly thanks to the Snap-Fit coupling and Molex Microfit connector.

Optional accessory

Kit of 6P X 3M cable + CN. MICROFIT



Code	L	Pack
KA00K00014	3 m	1

Applications

- ☰ Domestic water systems
- ☀ Heating

Safety

IP rating 40 CEI EN 60529-1997

Insulation class Class II equipment according to IEC 61140 (double insulation without earth conductor)

Operation

Actuation time [s]	20	
Auxiliary microswitch with 3-wire output (applications)	Maximum current	6A @ 250Vac for resistive loads
6-pole power cable	Length	1 M
	Connector	Molex Micro-Fit JR 2x3
Operating temperature and humidity	Environment	-30-50 °C @ 95% non-condensing
	Fluid	65°C continuous with 90°C peaks respecting the ambient temperature constraints
Regulatory compliance	EN 60730-1	Automatic electrical control devices for domestic use and similar
	2014/30/EU EN 61000-6-4	Electromagnetic compatibility

Wiring diagram



Item specifications:

E104 electric motor

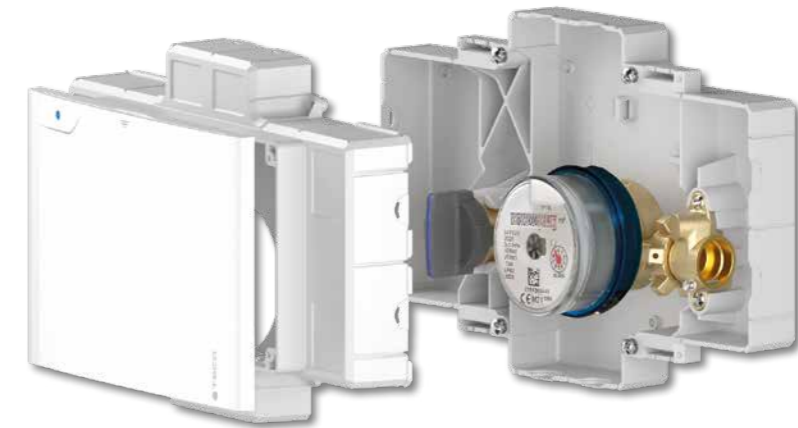
Compact, silent, low-consumption electric stepper motor with ON-OFF function and auxiliary microswitch in the version with open signal (heating), or the version with safety feedback when the valve is closed (domestic water).
Fast assembly and disassembly thanks to the Snap-fit connection and Microfit Molex connector.
Ambient temperature -30/+50°C

OTHER PRODUCTS OF THE
EREADY SERIES

K4CC
EREADY



Compact flush-mounting metering kit for domestic water with optional remote control



K4.1
EREADY



Flush-mounting single shut-off valve with optional remote control

