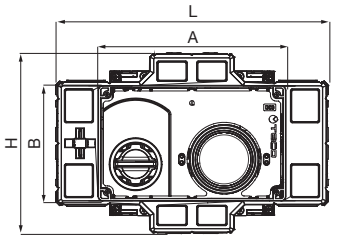
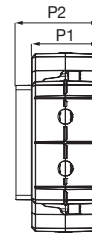
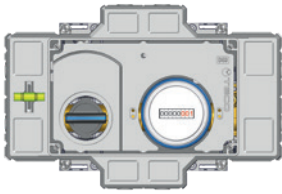




COMPACT FLUSH-MOUNTING METERING KIT FOR DOMESTIC WATER WITH OPTIONAL REMOTE CONTROL WITH METER

D03 Compatible faceplate



	Code	DN	D1	L	H	P1	P2	A	B	Faceplate	Pack
F	K4CCDF10100	15	F13F	280	186	69	85.5	194	119	D03	1

Includes: pre-assembled box, fixing brackets, site protection cover, spirit level, meter

DOES NOT include: faceplate, fittings, motor and cable

Material		
Body	Box	Top-Entry ball
CW617N Brass	PS	Engineered polymer

Technical specifications			
Connections	Working pressure	Temperature	Standard and certification
FASTEC	PN10 (10 bar)	0 °C + 95 °C	DIN EN 13828 - (KTW-W270) - DVGW W 570-1

FEATURES

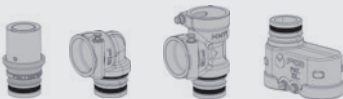
- Compact flush-mounting metering kit for domestic water with optional remote control, pre-assembled in an easily accessible sandwich box with knock-out parts.
- Valve with removable ball, brass body and Top Entry system, complies with DIN EN 13828 standard, with Soft Turn control.
- Flexible, fast and secure Fastec® connection.
- Closing and opening by operating the handle or via the optional **E104** motor.
- SJ EVO DN15 meter (with G 3/4" threaded connection) that can be equipped with radio or cable communication modules (M-BUS or LoRaWan).
- Faceplate can be purchased separately, available in different finishes with magnetic closure.

APPLICATIONS

- Domestic water systems

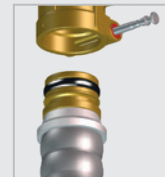
OPERATION AND TECHNOLOGIES

F FASTEC STORE The shut-off devices USE FASTEC STORE FITTINGS



GO TO THE ENTIRE FASTEC® RANGE

CONNECTION:

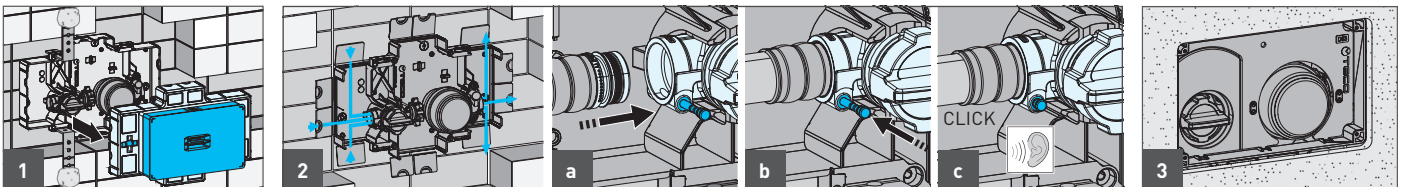


FASTEC

F13 - DN15

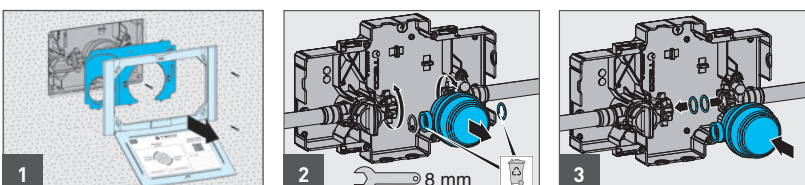
Fitting range: 16, 20, 25, 26 mm = 1/2"

K4CC INSTALLATION

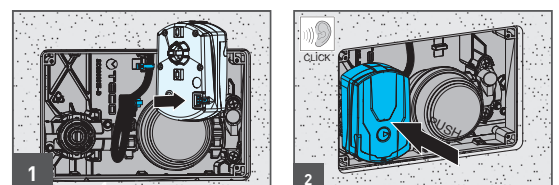


CAUTION: when installing the valve, insert the corrugated pipe in the box to make the valve compatible with the optional remote control.

METER INSTALLATION/MAINTENANCE



MOTOR INSTALLATION



ACCESSORIES

SJ EVO meter, G 3/4" L = 80mm



Code	DN	Pack
KA00CC0005	15	1

Link



Code	Pack
KA00CC0006	5

Modular extension kit

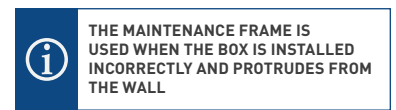
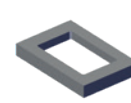


E4 modular handle extension kit
·23mm· modular + screws + faceplate extensions



Code	Pack
KA00K00015	1

Maintenance frame*



Code	Size	Pack
KRPL0005	250x160x20 mm	1

G 3/4" fitting - L = 80mm



Code	DN	Pack
KA00CC0007	20	5

SPARE PARTS

E4 TECO-CONTROL spare parts kit



Code	DN	Pack
KRTCE415000	15	1

E4 handle kit

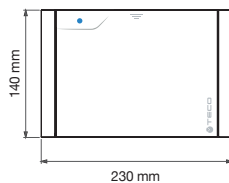


Code	Pack
KA00K40011	1

Kit of 2 spare seals for meter connection

Code	DN	Pack
KRGUCC00000	15	1

FACEPLATES D03



Code		Finish	Pack
KPLD0301600	○	White	5
KPLD0301M00	●	Polished chrome	1
KPLD0301800	●	Silver	1
KPLD0301A00	●	Black	1

COMMUNICATION MODULES

EVO 868 MHz LoRaWAN Radio module



Code	Pack
KA00CC0001	1

Radio EVO 868 MHz wireless M-Bus module



Code	Pack
KA00CC0002	1

M-Bus EVO module



Codice	Conf.
KA00CC0003	1

Pulse EVO module



Code	Pack
KA00CC0004	1

SPECIFICATION TEXT

K4CC with meter: Compact flush-mounting metering kit for domestic water with optional remote control

Compact flush-mounting metering kit for domestic water with optional remote control, pre-assembled in an easily accessible sandwich box with knock-out parts. Shut-off valve with Top Entry removable ball and full flow that complies with the DIN 13828 standard. Engineered polymer ball and Soft Turn anti-jamming seals. Fixing brackets, spirit level and site protection cover included. Closing and opening by operating the handle. Operating pin compatible with mounting the ON-OFF electric motor with auxiliary microswitch in the version with open signal or in the version with safety feedback when the valve is closed. Single jet meter for residential use, DN15 for hot or cold water (Length = 80 mm): ideal for indoor divided domestic applications (submetering). MID certified (R max 160), compatible with optional reed switch or static pulse emitter. It supports various installation positions and has high protection against external magnetic fields. It has a 360° rotatable clock and can be supplied with a radio or cable communication module. The fastening ring nuts for the meter connections are of a specific design to allow maintenance with a common 8mm spanner. Equipped with dedicated meter seals.

TECO Srl
Via Sandro Pertini, 39/41 - Zona industriale Noccole, 25050 Provaglio d'Iseo (BS)

+39 030 6850510 | +39 030 6850555
info@tecosrl.it | www.tecosrl.it

