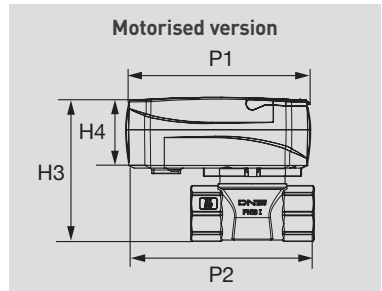
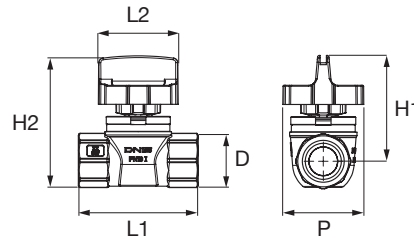


# TOP ENTRY BALL VALVE WITH OPTIONAL REMOTE CONTROL



Code	DN	D1	L1	L2	H1	H2	P	Pack	P1	P2	H3	H4
<b>F</b> T4P3271100	15	F13F	59	42	54	68	42	5	95	94	73	36
<b>F</b> T4P4271100	20	F14F	72	42	58	75	42	5	95	101	80	36
T4P3211100	15	FF 1/2"	63	42	55	70	42	5	95	96	74	36
T4P4211100	20	FF 3/4"	70	42	58	75	42	5	95	100	80	36

Does not include: fittings, motor and cable

Material	
Body	Top-Entry ball
CW617N Brass	Engineered polymer

Technical Data			
Connections	Working pressure	Temperature	Standard and certification
FASTEC®	PN10 (10 bar)	0 °C + 95 °C	DIN EN 13828 - (KTW-W270) DVGW W 570-1
Thread	PN10 (10 bar)	0 °C + 95 °C	DIN EN 13828 - (KTW-W270) - DVGW W 570-1

## FEATURES

- Top Entry® with removable ball and brass body, compliant with DIN EN 13828 and with light Soft Turn® control.
- Closing and opening by manual handle or motorised with an E104 motor.

## APPLICATIONS

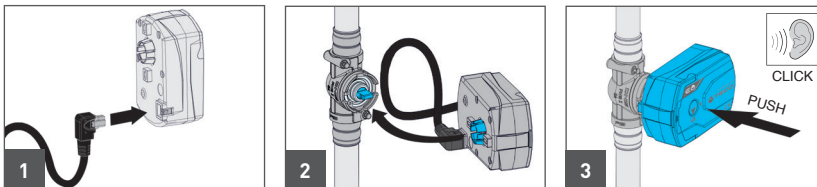
- For hot and cold drinking water
- Domestic water systems
- Heating



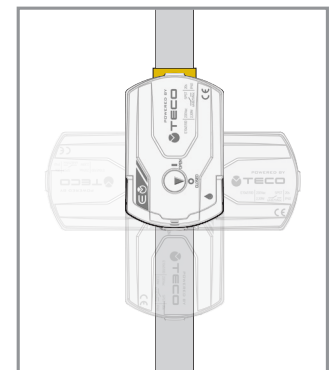
## E100 SERIES - ELECTRIC MOTOR



### MOTOR INSTALLATION

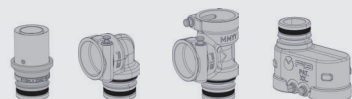


## 4 POSITIONS OF THE E100 SERIES MOTOR



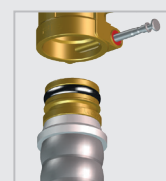
## OPERATION AND TECHNOLOGIES

**FASTEC STORE** The shut-off devices USE FASTEC STORE FITTINGS.



GO TO THE ENTIRE FASTEC® RANGE

## CONNECTION:

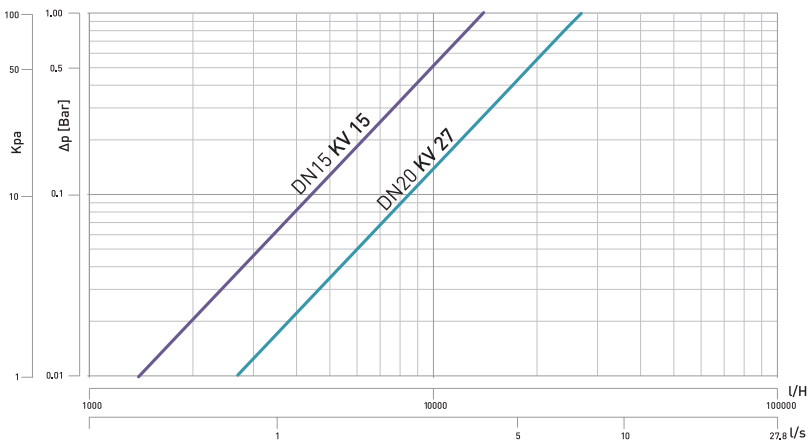


**FASTEC®**

**F13 - DN15**  
Fitting range: 16, 20, 25, 26 mm = 1/2"

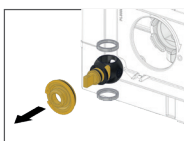
**F14 - DN20**  
Fitting range: 25, 26, 32 mm = 3/4"

## FLOW LOSS DIAGRAM



## SPARE PARTS

### E4 Teco Control spare parts kit



### E4 handle kit



Code	DN	Pack
KRTCE415000	15	1
KRTCE420000	20	1

Code	Pack
KA00K40011	1

## ITEM SPECIFICATIONS

### T4 E-READY Shut-off valve with optional motor

Top Entry shut-off valve with Top Entry removable ball and full flow that complies with the DIN EN13828 standard. Engineered polymer ball and Soft Turn anti-jamming seals for light control. Brass body. Operating pin compatible with mounting the ON-OFF electric motor with auxiliary microswitch in the version with open signal or in the version with safety feedback when the valve is closed.

## COMPATIBLE PRODUCTS

