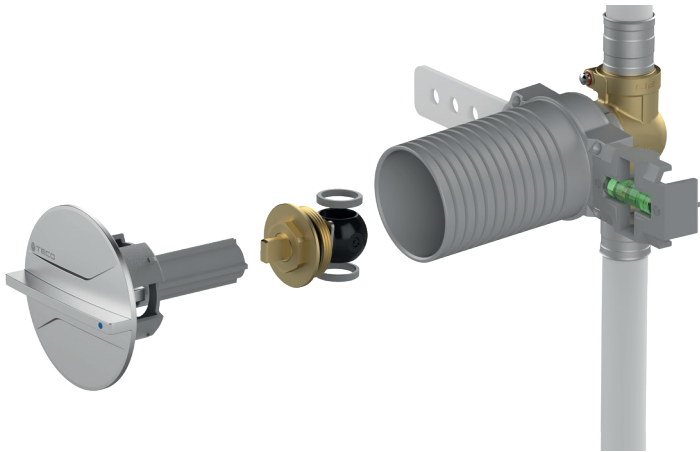


ULTRA

FLUSH-MOUNTING TOP ENTRY VALVE

Data sheet
MCTW001.00 - 09/2022



ULTRA is a compact shut-off valve. Full flow, in accordance with the EN 806-2 standard. Perfect flush mounting with adjustable depth installation box. Control accessories with minimum protrusion flush with the wall. TOP-ENTRY® removable shut-off valves with Soft Turn® full-flow anti-jamming balls. The FASTEC® connection is convenient and safe to work with.



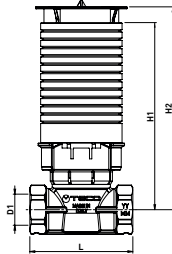
Material				
Body	Support	Box	Balls	Seats
Brass CW618	Nylon PA6	ABS	Engineered Polymer	Silikon

TECHNICAL SPECIFICATIONS

Fittings	Working pressure	Temperature	Standard and certification
FASTEC®-Threaded F.	PN10 (10 bar)	0 °C + 95 °C	DIN EN 13828 (KTW-W270) DVGW W570-1

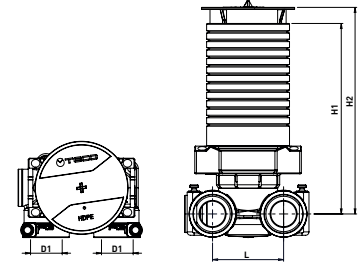
VERSIONS AND CODES

Straight version *



Code	DN	D1	H1	H2	L	Pack
U4P3911100	15	Rp1/2"	112.6	122.1	62	10
F U4P3971100	15	F13	112.4	121.9	58.9	10
U4P4911100	20	Rp3/4"	115.3	125	70	10
F U4P4971100	20	F14	115.3	125	72	10

"U" version *



Code	DN	D1	M	H1	H2	Pack
F U4P3972100	15	F13	42	112,6	122,1	10

* Includes: fixing brackets, site protection cover. Does not include: flush accessories and fittings.

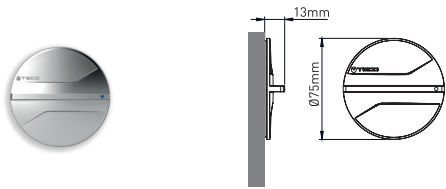


The shut-off devices USE FASTEC® STORE FITTINGS.



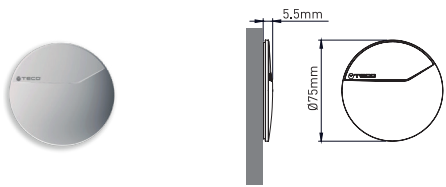
CONTROL

B03 External flush control



Code	Colour	Pack
UPLU0302600	White	10
UPLU0302M00	Polished Chrome	10
UPLU0302A00	Black	4
UPLU0302800	Silver	4

U03 Internal flush control

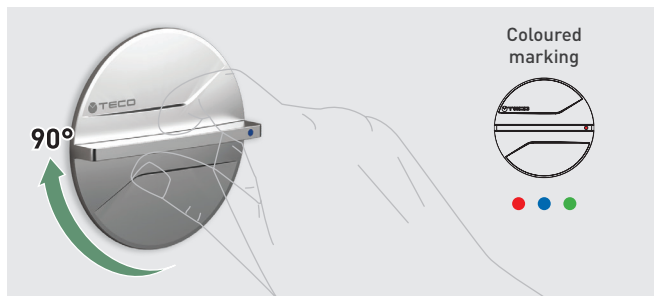


Code	Colour	Pack
UPLU0301600	White	10
UPLU0301M00	Polished Chrome	10
UPLU0301A00	Black	4
UPLU0301800	Silver	4

FUNCTION AND INTEGRATED TECHNOLOGIES

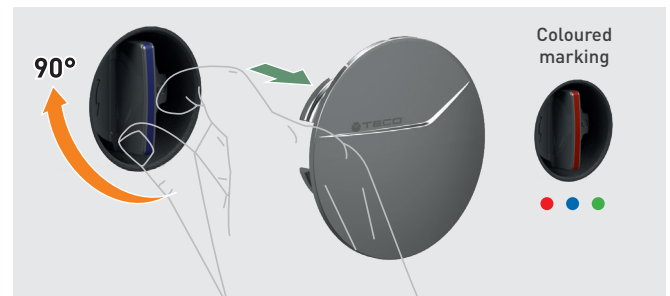
EXTERNAL CONTROL

B03



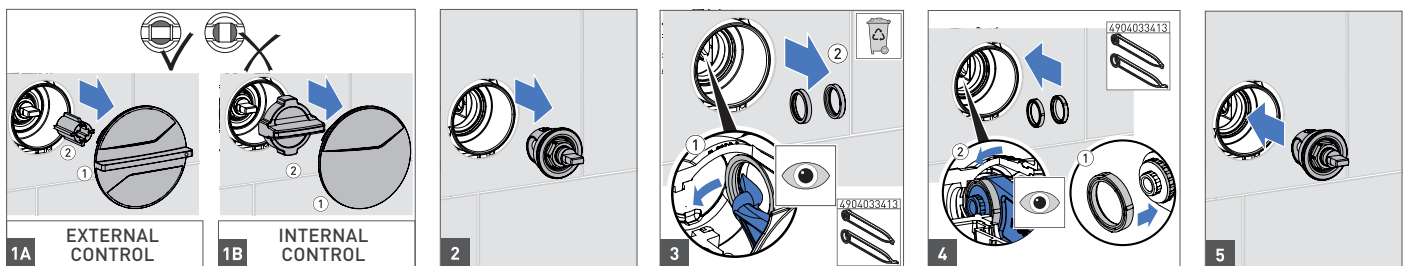
INTERNAL CONTROL

U03

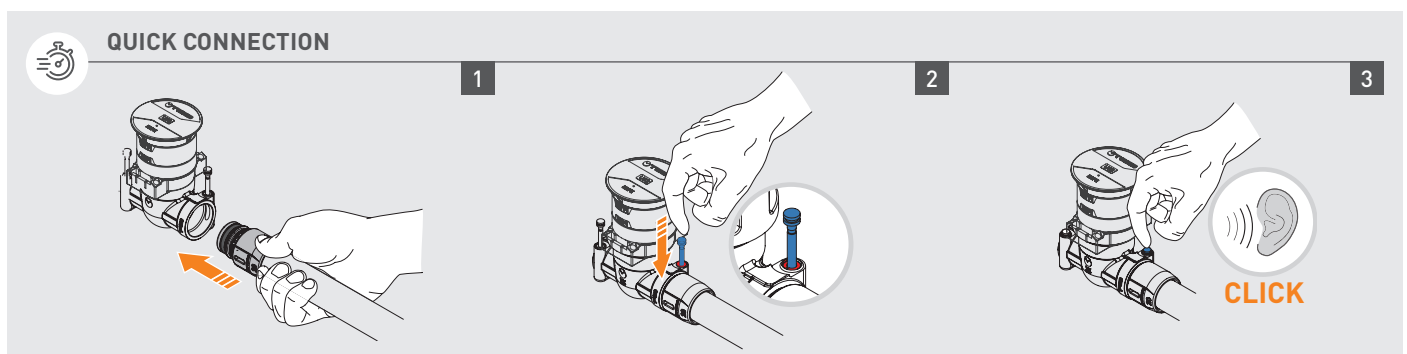


TOP-ENTRY

TECO Control Maintenance DN15 - DN20



FASTEC® is the quick connection system approved according to DVGW W534, which is specific for sanitary installations DIN EN 13828.



TECO Srl Unipersonale
Via Sandro Pertini, 39/41 - Zona industriale Noccole, 25050 Provaglio d'Iseo (BS)
+39 030 6850510 | +39 030 6850555
info@tecosrl.it | www.tecosrl.it





GO TO THE ENTIRE
FASTEC® RANGE

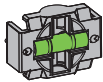
The shut-off devices
USE FASTEC® STORE FITTINGS.



Range of original fittings
from domestic water system
manufacturers (from ø 16
to 26)

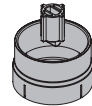
ACCESSORIES

Link with adjustable level



Code	Pack
KA00U40004	10

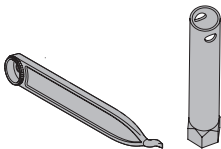
Modular extension kit



+ 28 mm

Code	DN	D1	M	H1	H2	Pack
KA00U40003	15	F13	42	52.5	84	10

Seal maintenance tool kit



Code	Pack
KAI4990000	5

Frames



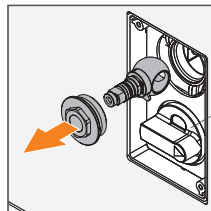
Code	Colour	Pack
KRPLU406001	White	4
KRPLU40M001	Polished Chrome	4
KRPLU40A001	Black	4
KRPLU408001	Silver	4

SPARE PARTS

Teco control



With the Top Entry
system, the ball is fully
removable and spare
parts have been available
for more than 30 years.



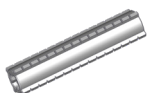
Code	DN	Pack
KRTC415000	15	6
KRTC420000	20	4

Seal kit



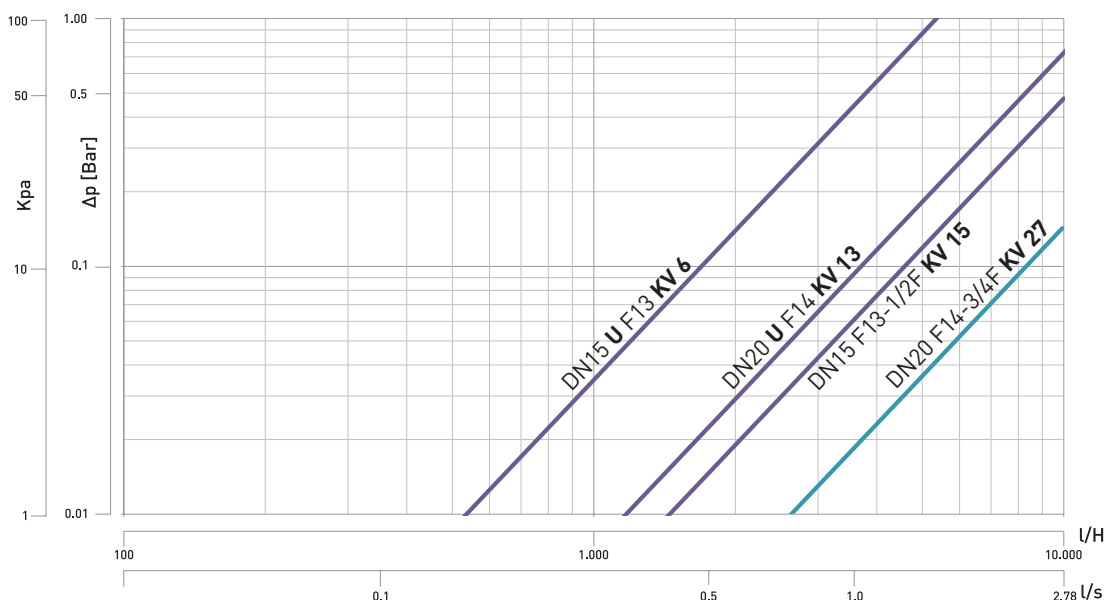
Code	DN	Pack
KRSEI415000	15	6
KRSEI420000	20	4

Kit easily-cut stem



Code	Pack
KA00U40007	4

FLOW LOSS DIAGRAM



ITEM SPECIFICATIONS

ULTRA: Flush-mounting shut-off valve

Top Entry shut-off valve with removable ball and full flow that complies with the EN 13828 standard. Engineered polymer ball and Soft Turn anti-jamming seals. Complete with installation box, adjustment brackets and site protection plug. Internal or external controls that are flush with the wall, with 90 degree operation. Finishes in four different colours.

Maximum temperature (peak) 95°C.

Maximum working temperature 70°C.

Maximum pressure 10 bar.

