

- 164 is a shut-off valve
- Full flow, in accordance with the EN 806-2 standard
- TOP-ENTRY® removable shut off unit with Soft Turn® full-flow anti-jamming balls
- The FASTEC® connection is convenient and safe to work with



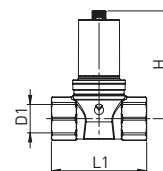
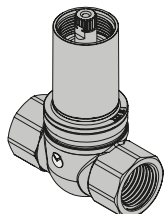
Material				
Body	Balls	Seats	Upper Cap	Accessories
Brass CW618	Engineered Polymer	Silicone	ABS chrome plated cartridge + Brass basis	ABS chrome plated

TECHNICAL SPECIFICATIONS

Connections	Working pressure	Temperature	Standard and certification
FASTEC® - Threaded F.	PN10 (10 bar)	0°C + 95 °C	DIN EN 13828 (KTW-W270) DVGW W570-1

VERSIONS AND CODES

Straight threaded version*

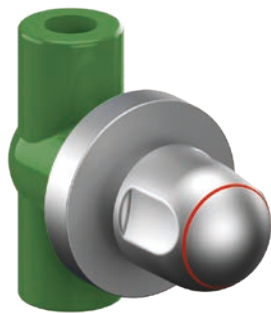


Code	DN	D1 EN 10226	H	L1	SW	Pack
I4T3911100	15	RP 1/2"	70	63	27	30
I4T4911100	20	RP 3/4"	74	73	32	20
I4T5911100	25	RP 1"	86	83	41	5

* Include: site protection cover. Does not include: control accessories.

164 PPR

PPR FLUSH-MOUNTING SHUT-OFF VALVE



- 164 PPR is a shut-off valve
- Full flow, in accordance with the EN 806-2 standard
- TOP-ENTRY® removable shut-off valves with Soft Turn® full-flow anti-jamming balls
- the FASTEC® connection is convenient and safe to work with



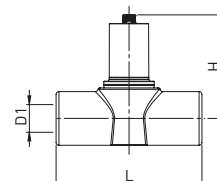
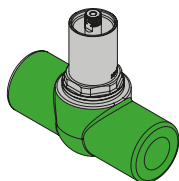
Materiale					
Body	Coating	Balls	Seats	Upper Cap	Accessories
Brass CW618	PPR	Engineered Polymer	Silikon	ABS chrome plated cartridge + Brass basis	ABS chrome plated

TECHNICAL SPECIFICATIONS

Connections	Working pressure	Temperature	Standard and certification
FASTEC® - Threaded F.	PN10 (10 bar)	0°C + 95 °C	DIN EN 13828 (KTW-W270) - EN ISO 15874 - DIN 8077/78 DIN 16962 - DVGW

VERSIONS AND CODES

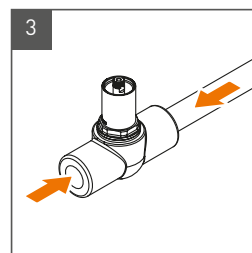
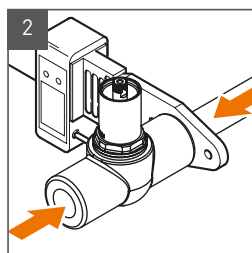
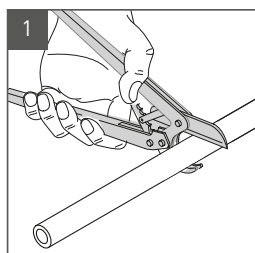
Straight pp-r version*



Code	DN	Colour	D1	H	L1	Pack
I403981V00	15	●	ø20	70	101	20
I403982V00	15	●	ø25	70	101	20
I404981V00	20	●	ø32	74	121	5
I403981B00	15	●	ø20	70	101	20
I403982B00	15	●	ø25	70	101	20
I404981B00	20	●	ø32	74	121	5

* Include: site protection cover. Does not include: control accessories.

THE TOP ENTRY PP-R SERIES OF COCKS IS COMPATIBLE WITH ALL PP-R PIPES
(Polypropylene Random Copolymer) MANUFACTURED IN ACCORDANCE WITH THE EN ISO 15874 STANDARD



To make the connections quickly and correctly, it is essential to use tools that comply with the DVS2207 standards. The welding procedure must comply with the DVS2207 -2208 joint standards.

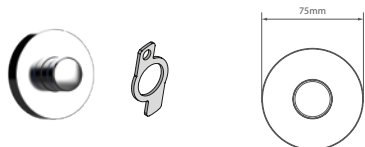
TECO Srl
Via Sandro Pertini, 39/41 - Zona industriale Noccole, 25050 Provaglio d'Iseo (BS)

+39 030 6850510 | +39 030 6850555
info@tecosrl.it | www.tecosrl.it



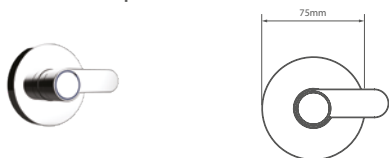
CONTROL ACCESSORIES

164 chrome plated threaded plug kit



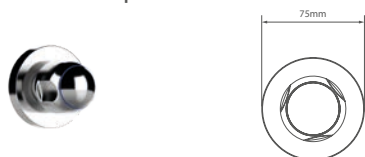
Code	Colour	Compatibility	Pack
KAI4010000	Polished chrome	164	10

164 chrome plated lever kit



Code	Colour	Compatibility	Pack
KAI4020000	Polished chrome	164	10

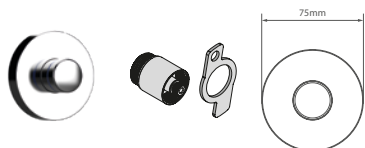
164 chrome plated handle kit



Code	Colour	Compatibility	Pack
KAI4030000	Polished chrome	164	10

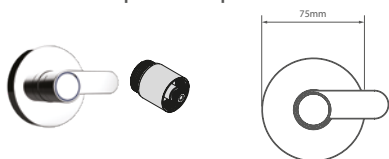
H-PLUS CONTROL ACCESSORIES

164 chrome plated h-plus threaded plug kit +25mm



Code	Colour	Compatibility	Pack
KAI4011000	Polished chrome	164	10

164 chrome plated h-plus lever kit +25mm



Code	Colour	Compatibility	Pack
KAI4021000	Polished chrome	164	10

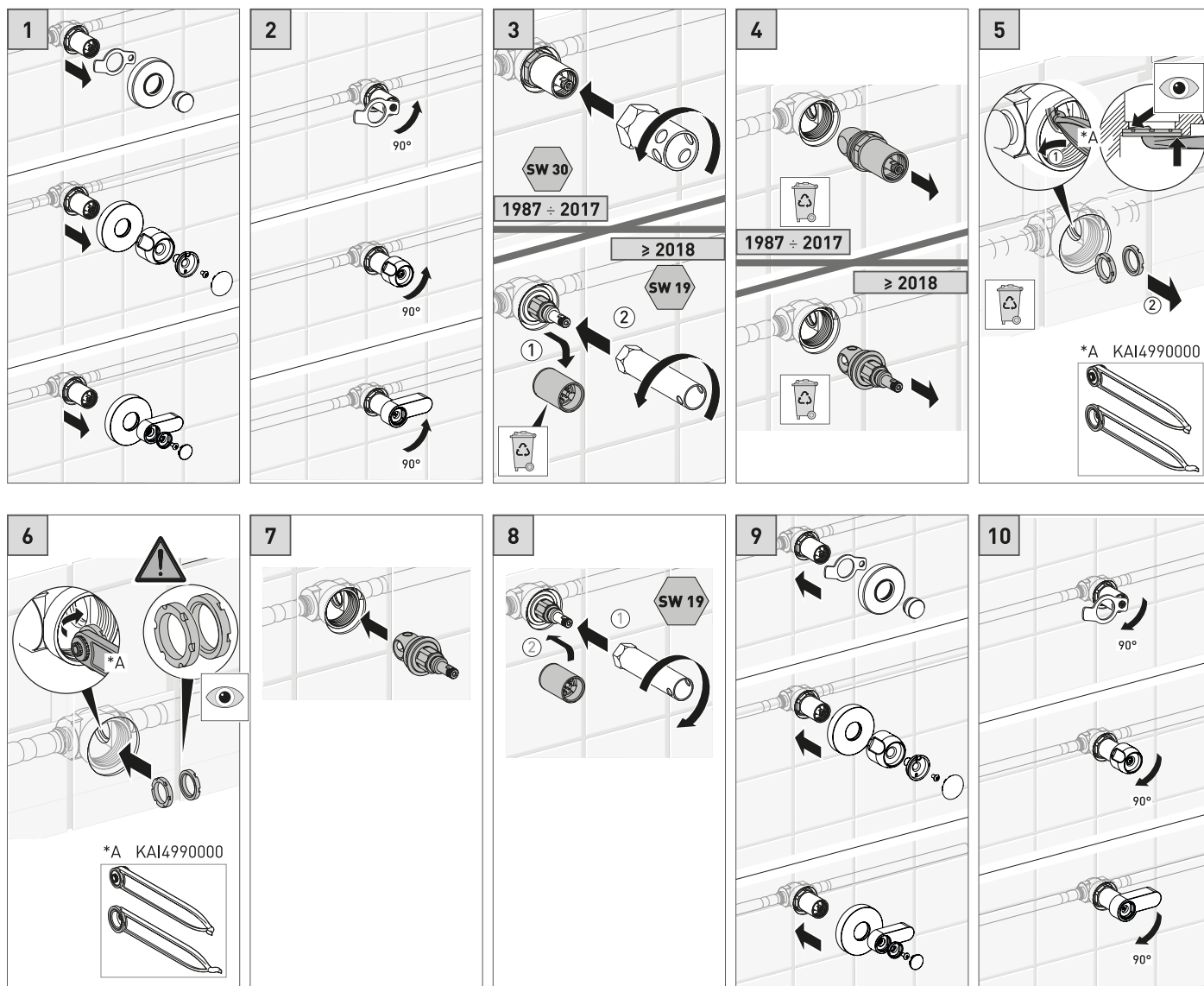
164 chrome plated h-plus handle kit +25mm



Code	Colour	Compatibility	Pack
KAI4031000	Polished chrome	164	10

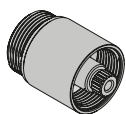
FUNCTION AND INTEGRATED TECHNOLOGIES

TECO CONTROL



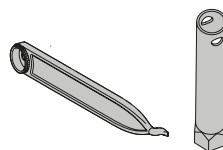
ACCESSORIES

Extension for 164 1/2"-3/4"-1" cock

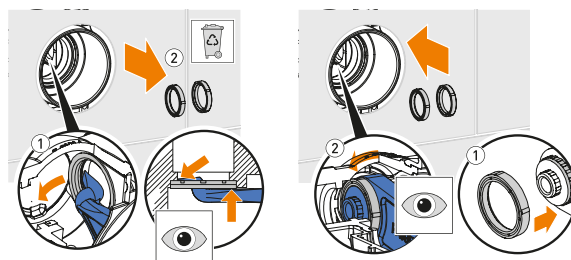


Code	Compatibility	Pack
I4095000	164	20

Seal maintenance tool kit

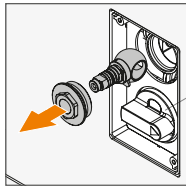
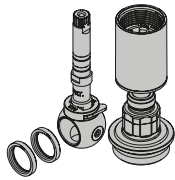


Code	Pack
KAI4990000	5

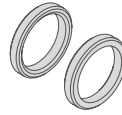


SPARE PARTS

Teco control



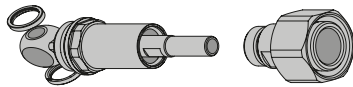
Seal kit



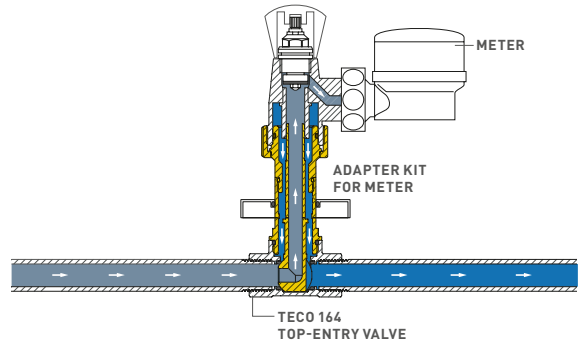
Code	DN	Key	Pack
I4099030GR	15	17	6
I4099040GR	20		4
I4099050GR	25	19	2

Code	DN	Pack
KRSEI415000	15	6
KRSEI420000	20	4
KRSEI425000	25	2

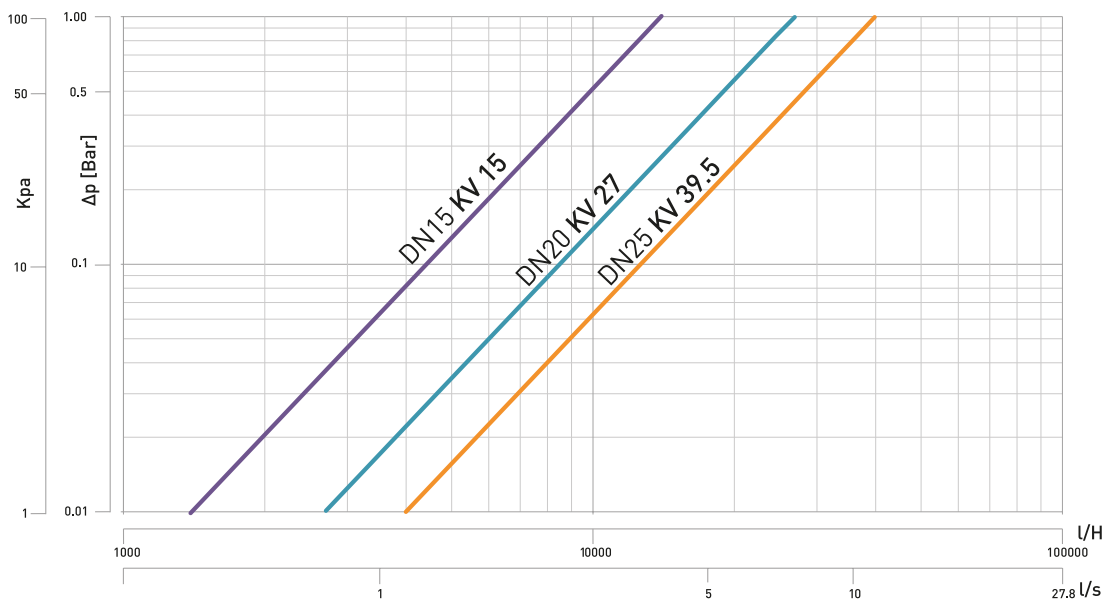
Adapter kit for meter valves



Code	DN	Key	Compatibility	Pack
PR0013034004	15	30	SIMPLEX	1
PR0013034008	20	30	SIMPLEX	1



FLOW LOSS DIAGRAM



ITEM SPECIFICATIONS

164: Flush-mounting shut-off valve

Top Entry shut-off valve with removable ball and full flow that complies with the EN 13828 standard. Engineered polymer ball and Soft Turn anti-jamming seals. Complete with site protection cover. Cap accessories, lever or handle with 90 degree operation. Chrome finish.

Maximum temperature (peak) 95°C.

Maximum working temperature 70°C.

Maximum pressure 10 bar.

164 PPR: Flush-mounting shut-off valve with PPR coating

Top Entry shut-off valve with removable ball and full flow that complies with the EN 13828 standard and PPR coating with connectons in accordance with the EN ISO 15874 standard.

Engineered polymer ball and Soft Turn anti-jamming seals. Complete with site protection cover. Cap accessories, lever or handle with 90 degree operation. Chrome finish.

Maximum temperature (peak) 95°C.

Maximum working temperature 70°C.

Maximum pressure 10 bar.

