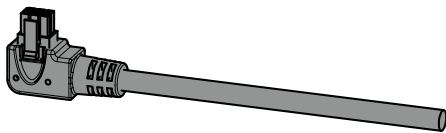


Appl.	Code	Voltage	Auxiliary microswitch	L	H	P1	P2	A	B	Pack
💧	E1045100	230V	Switching when closed	95	59	36	18	65	30	1
	E1046100	24V	Switching when closed	95	59	36	18	65	30	1
☀️	E1042100	230V	Switching when open	95	59	36	18	65	30	1
	E1044100	24V	Switching when open	95	59	36	18	65	30	1

Includes: cable (1 m)

ACCESSORIES

Kit of 6P X 3M cable + MICROFIT CN.



Code	L	Pack
KA00K00014	3 m	1

TECHNICAL SPECIFICATIONS

SAFETY

IP rating 40 CEI EN 60529-1997

Insulation class Class II equipment according to IEC 61140 (double insulation without earth conductor)

OPERATION

Actuation time [s] 20

Auxiliary microswitch with 3-wire output (applications) Maximum current 6A @ 250Vac for resistive loads

6-pole power cable Length 1 M
Connector Molex Micro-Fit JR 2x3

Operating temperature and humidity Environment -30-50 °C @ 95% non-condensing
Fluid 65°C continuous with peaks of 90°C respecting the ambient temperature constraints

Regulatory compliance EN 60730-1 Automatic electrical control devices for domestic use and similar

2014/30/EU EN 61000-6-4 Electromagnetic compatibility

FEATURES

- Energy-efficient electric stepper motor.
- Four different models available to meet different needs during use (domestic or heating systems / connection to home automation system or switch operation).
- Fast assembly and disassembly thanks to the Snap-Fit connection and Molex Microfit connector.

APPLICATIONS

- 💧 Domestic water systems
- ☀️ Heating

WIRING DIAGRAM



ELECTRICAL DATA

Power supply frequency 50/60 Hz

Consumption during pause 110-230 Vac 0.9 W [2.3 VA]
15-30 Vac/dc 0.3 W [0.4 VA]

Consumption during operation 110-230 Vac 2.6 W [5.2 VA]
15-30 Vac/dc 1.4 W [2.1 VA]

Cable connection H5VV-F PVC 6-pole x 0.75mm² Cable length = 1000mm

Connector connection Molex Micro-Fit JR 2x3

FUNCTIONAL DATA

Actuation time 20 sec

3-wire auxiliary microswitch Maximum current 6A @ 250Vac for resistive loads

SAFETY DATA SHEET

Protection class II, double insulation without earth conductor (IEC 61140)

Degree of protection IP40 (CEI EN 60529)

Regulatory compliance EN 60730-1 2014/30/EU EN 61000-6-4

Valve jam detection Automatic device shut-down

Ambient Temperature -30-50 °C @ 95% non-condensing humidity

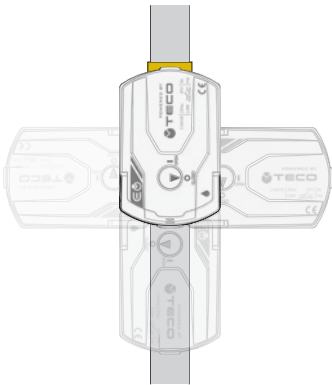
Fluid Temperature 65°C continuous with peaks of 90°C respecting the ambient temperature constraints

WEIGHT

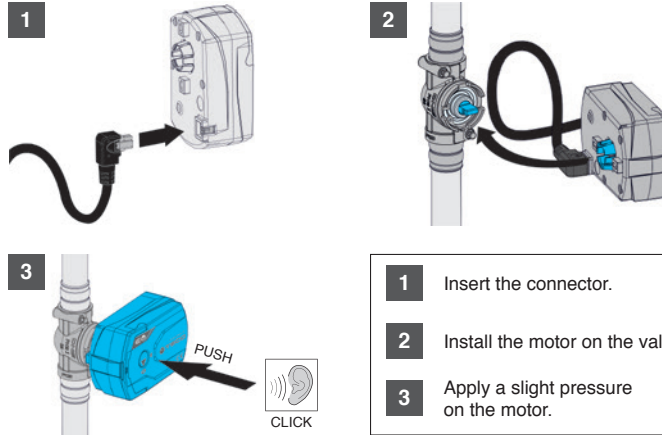
Weight (with cable) 0.24 kg

OPERATION AND TECHNOLOGIES

4 POSITIONS OF THE E100 SERIES MOTOR



MOTOR INSTALLATION



SPECIFICATION TEXT

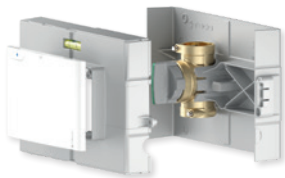
E104 electric motor

Compact, silent, low-consumption electric stepper motor with ON-OFF function and auxiliary microswitch in the version with open signal (heating), or the version with safety feedback when the valve is closed (domestic water). Fast assembly and disassembly thanks to the Snap-fit connection and Microfit Molex connector. Ambient temperature -30/+50 °C.

E-READY PRODUCTS



K4.1
EREADY



T4
EREADY



K4CC
EREADY

