



FEATURES

- **Quick and safe connection without tools.**
- Unbeatable in tight spaces.
- Sealing ensured by O-ring with static (controlled) predefined compression.
- **Reliability certified** by millions of fittings installed worldwide, both visible and concealed.
- **Wide range of fittings, adapters and valves** to suit many system solutions.
- Rotatable.
- Non-removable fixing pin.

Material		
Body	Pin	O-Ring
Hot forged Brass CW617N	CW617N Brass nickel-plated	EPDM Perox 70 ShA
Corrugated pipe		
Pipe	FASTEC Connection	O-Ring
Stainless steel AISI316 Thickness 0.3 mm	Stainless steel AISI304	EPDM Perox 70 ShA

APPLICATIONS

- For hot and cold drinking water.
- For cooling and heating water with or without antifreeze.
- For external and concealed installations.



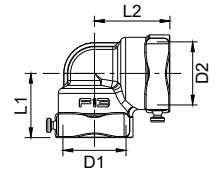
Technical Specifications

Connections	Working pressure	Temperature	Tensile strength	Testing	Bending strength
FASTEC	PN16 (16 bar) MAX 50 psi	+ 5 °C ÷ +95 °C	450 Kg	100% (hydraulic tightness)	according to EN 1254-20

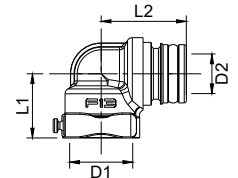
FASTEC® Fittings



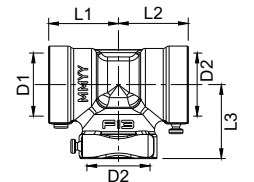
Code	Version	D1	D2	D3	L1	L2	L3
RF12210200	90°	F13F	F13F	-	23.0	27.0	-
RF22220200	90°	F14F	F14F	-	29.1	34.7	-



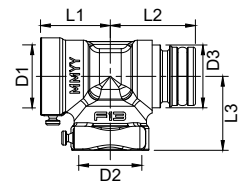
Code	Version	D1	D2	D3	L1	L2	L3
RF12210100	90°	F13F	F13F	-	23.0	30.5	-
RF22220100	90°	F14F	F14M	-	29.1	39.0	-



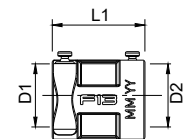
Code	Version	D1	D2	D3	L1	L2	L3
RF12310200	T	F13F	F13F	F13F	25.0	25.0	26.5
RF22320200	T	F14F	F14F	F14F	29.1	29.1	34.7



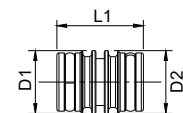
Code	Version	D1	D2	D3	L1	L2	L3
RF12310100	T	F13F	F13F	F13M	25.0	30.5	26.5
RF22320100	T	F14F	F14F	F14M	29.1	37.5	34.7



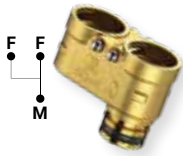
Code	Version	D1	D2	D3	L1	L2	L3
RF12110200	Sleeve	F13F	F13F	-	33.2	-	-
RF22120100	Sleeve	F14F	F14F	-	39.4	-	-



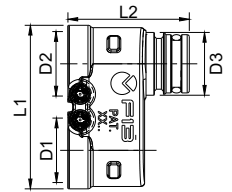
Code	Version	D1	D2	D3	L1	L2	L3
KA00K00008	Nipple	F13M	F13M	-	31.0	-	-
KA00K00017	Nipple	F14M	F14M	-	38.0	-	-



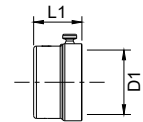
FASTEC® Fittings



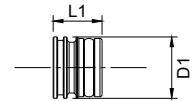
Code	Version	D1	D2	D3	L1	L2	L3
KA00F10001	Dual joint Twin	F13F	F13F	F13M	58.6	43.5	-



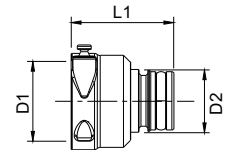
Code	Version	D1	D2	D3	L1	L2	L3
KA00K00016	Plug	F13F	-	-	17.3	-	-
KA00K00018	Plug	F14F	-	-	21.6	-	-



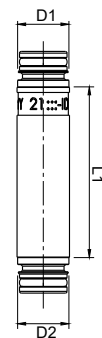
Code	Version	D1	D2	D3	L1	L2	L3
KA00K00002	Plug	F13M	-	-	17.5	-	-
KA00K00010	Plug	F14M	-	-	21.8	-	-



Code	Version	D1	D2	D3	L1	L2	L3
RF12101100	Reducer	F14F	F13M	-	36.7	-	-



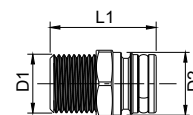
Code	Version	D1	D2	D3	L1	L2	L3
RF12110400	Barrel nut	F13F	F13F	-	25	-	-
RF12110500	Barrel nut	F13F	F13F	-	50	-	-
RF12110600	Barrel nut	F13F	F13F	-	75	-	-



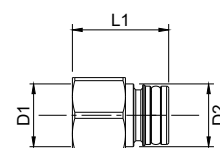
Threaded fittings



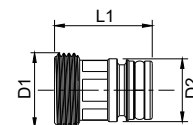
Code	Version	D1	D2	D3	L1	L2	L3
KA00K00003	Threaded according to EN 10226-1	R 1/2"	F13M	-	38.0	-	-
KA00K00013	Threaded according to EN 10226-1	R 3/4"	F13M	-	40.5	-	-
KA00K00009	Threaded according to EN 10226-1	R 3/4"	F14M	-	43.8	-	-
KA00K00019	Threaded according to EN 10226-1	R 1"	F14M	-	46.8	-	-



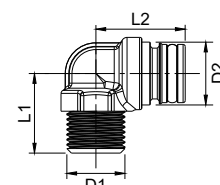
Code	Version	D1	D2	D3	L1	L2	L3
RF12101000	Threaded according to EN 10226-1	1/2" Rp	F13M	-	34.5	-	-
RF12111000	Threaded according to EN 10226-1	Rp 3/4"	F13M	-	36.0	-	-
RF12120100	Threaded according to EN 10226-1	Rp 3/4"	F14M	-	38.8	-	-
RF12120200	Threaded according to EN 10226-1	1"	F14M	-	42.8	-	-



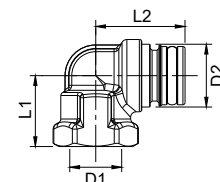
Code	Version	D1	D2	D3	L1	L2	L3
KA00K00004	Threaded Eurokonus according to DIN 3838	3/4"	F13M	-	35.0	-	-



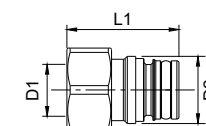
Code	Version	D1	D2	D3	L1	L2	L3
RF122F0100	90° Threaded according to EN 10226-1	R 1/2"	F13M	-	28.5	32.0	-



Code	Version	D1	D2	D3	L1	L2	L3
RF122F0200	90° Threaded according to EN 10226-1	1/2" Rp	F13M	-	25.4	32.0	-



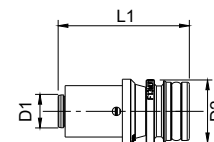
Code	Version	D1	D2	D3	L1	L2	L3
RF12110900	Swivel nut according to ISO 228-1	G 3/4"	F13M	-	40.2	-	-



Fittings for multi-layer pipes



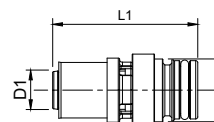
Code	Version	D1	D2	D3	L1	L2	L3
RF13M16101VA	VALSIR PEXAL-BRASS	16x2.0	F13M	-	47.0	-	-
RF13M16102VA	VALSIR PEXAL-BRASS	16x2.25	F13M	-	47.0	-	-
RF13M20101VA	VALSIR PEXAL-BRASS	20x2.0	F13M	-	44.5	-	-
RF13M20102VA	VALSIR PEXAL-BRASS	20x2.5	F13M	-	47.0	-	-
RF13M26101VA	VALSIR PEXAL-BRASS	26x3.0	F13M	-	48.8	-	-
RF14M26101VA	VALSIR PEXAL-BRASS	26x3.0	F14M	-	51.8	-	-
RF14M32101VA	VALSIR PEXAL-BRASS	32x3.0	F14M	-	55.3	-	-



APPLICABLE PRESSING JAWS
H - TH - U - C



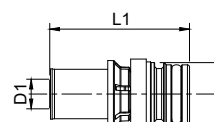
Code	Version	D1	D2	D3	L1	L2	L3
1651039	TIEMME 1650 series	16x2.0	F13M	-	52.0	-	-
1651040	TIEMME 1650 series	20x2.0	F13M	-	52.0	-	-
1651041	TIEMME 1650 series	26x3.0	F13M	-	52.0	-	-



APPLICABLE PRESSING JAWS
H - TH - U - B - RF



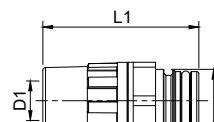
Code	Version	D1	D2	D3	L1	L2	L3
511115MP	IVAR MULTI-PRESS	16x2.0	F13M	-	50.1	-	-
511116MP	IVAR MULTI-PRESS	16x2.25	F13M	-	50.1	-	-
511118MP	IVAR MULTI-PRESS	20x2.0	F13M	-	50.0	-	-
511119MP	IVAR MULTI-PRESS	20x2.25	F13M	-	50.0	-	-
511120MP	IVAR MULTI-PRESS	20x2.25	F13M	-	50.0	-	-
511121MP	IVAR MULTI-PRESS	25x2.25	F13M	-	53.0	-	-
511122MP	IVAR MULTI-PRESS	26x3.0	F13M	-	53.0	-	-



APPLICABLE PRESSING JAWS
R - H - TH - U - B - BE - F



Code	Version	D1	D2	D3	L1	L2	L3
39342	AQUATECHNIK SAFETY	16x2.0	F13M	-	55.9	-	-
39344	AQUATECHNIK SAFETY	20x2.0	F13M	-	57.7	-	-

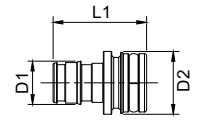


* Please refer to the manufacturer's technical documentation for further details.

Fittings for PEX pipes



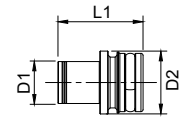
Code	Version	D1	D2	D3	L1	L2	L3
RF12100100	EXPANSION RING	16x1.8	F13F	-	33.5	-	-
RF12100200	EXPANSION RING	20x1.5	F13F	-	39.0	-	-
RF12100300	EXPANSION RING	25x2.3	F13M	-	44.0	-	-



* Please refer to the manufacturer's technical documentation for further details.



Code	Version	D1	D2	D3	L1	L2	L3
RF13M1210301	AXIAL CRIMP	12x1.1	F13M	-	30.5	-	-
RF13M1610301	AXIAL CRIMP	16x1.5	F13M	-	30.5	-	-
RF13M2010301	AXIAL CRIMP	20x1.9	F13M	-	30.5	-	-

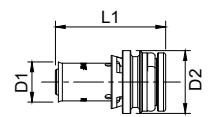


APPLICABLE PRESSING JAWS
R - RF - H - RFZ - RFP

certification NF 545



Code	Version	D1	D2	D3	L1	L2	L3
RF13M1210401	RADIAL CRIMP	12x1.1	F13M	-	39.5	-	-
RF13M1610401	RADIAL CRIMP	16x1.5	F13M	-	39.5	-	-
RF13M2010401	RADIAL CRIMP	20x1.9	F13F	-	30.5	-	-

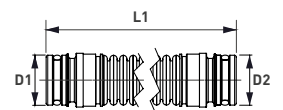


certification NF 545

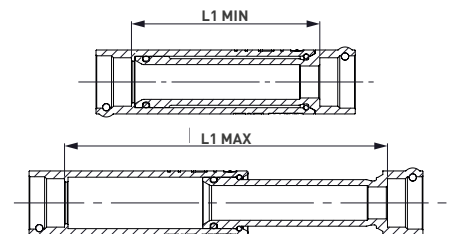
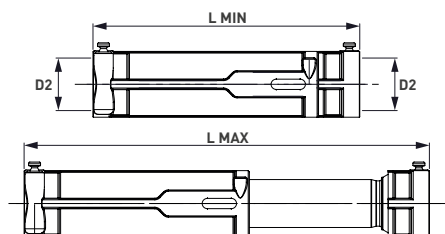
FASTEC® semi-rigid corrugated stainless steel pipe



Code	D1	D2	D3	L1	L2	L3
RF12710100	F13M	F13M	-	250	-	-
RF12710200	F13M	F13M	-	400	-	-

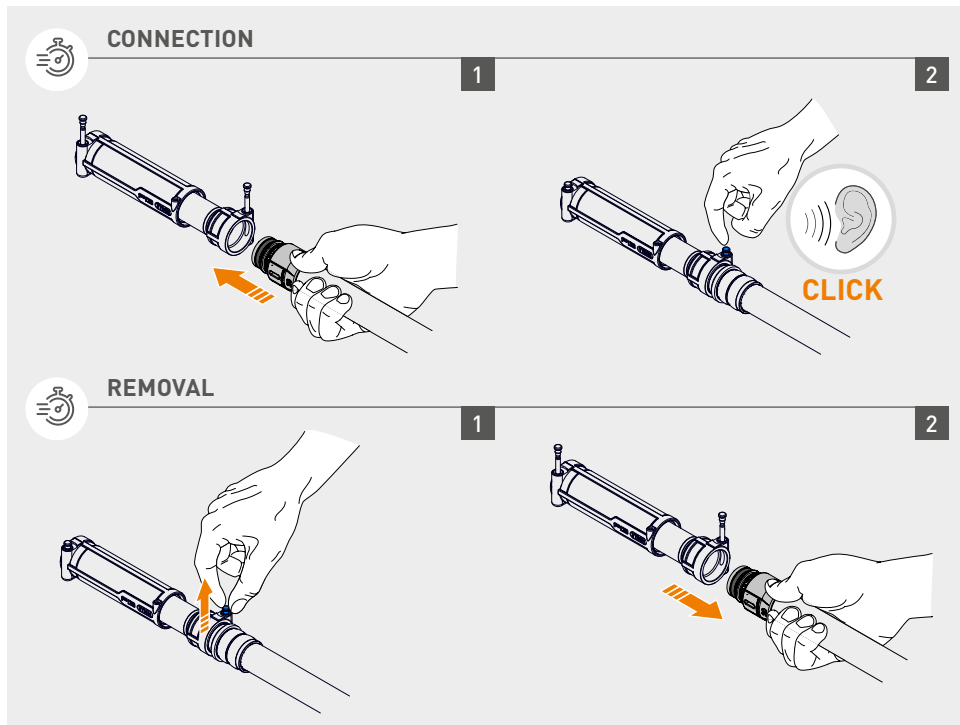


EXTENDER telescopic joint



Code	D2	D2	L MIN	L MAX	L1 MIN	L1 MAX
RF12110300	F13F	F13F	112	170	81	139
RF22120200	F14F	F14F	126	190	88	152

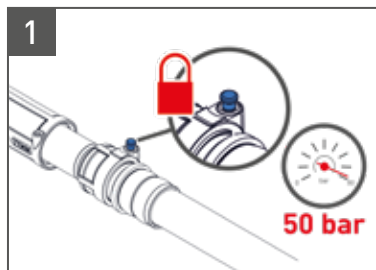
FASTEC® CONNECTION / REMOVAL



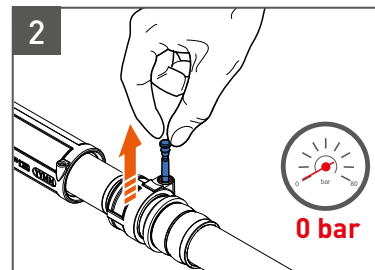
WARNINGS

- Quick, easy and safe connection: The fixing pin integral with the valve or fitting body makes connection extremely easy and convenient. When the pin is lowered, a CLICK confirms that the connection has been made correctly. The pin can only be lowered if the fitting has been inserted correctly.
- The FASTEC® fittings range allows you to connect pipes of different materials, diameters and sizes.
- With the system running and under pressure **It is no longer possible to rotate the fittings or extract the pin.**

TECHNICAL FEATURES



The pin remains stuck even if there is low pressure in the system. FASTEC® connections are designed to withstand up to a pressure of 50 bars without any mechanical deformation.



The pin is operable and the fitting can only be disconnected if the system is pressure-free (0 bar).

OPERATION AND TECHNOLOGIES



DISCOVER THE ENTIRE FASTEC RANGE



CONNECTION:

COMPARATIVE TABLE			
CONNECTIONS FASTEC	TRADITIONAL CONNECTIONS		
	DN	INCHES	MULTILAYER PIPE / PEX
F13	15	1/2"	Ø 12 - 16 - 20 - 25 - 26
F14	20	3/4"	Ø 26 - 32

SPECIFICATION TEXT

FASTEC: FASTEC F13 and F14 fittings and adapters

Fittings and adapters with quick coupling connection using FASTEC F13 and F14 technology and anti-unscrewing locking pin. Seal guaranteed through static compression O-Ring (controlled). Rotatable connection during installation. Operating temperature +5 °C / +95 °C. Working pressure: PN16 (16 bar) - Maximum pressure: 50 bar.

TECO Srl
Via Sandro Pertini, 39/41 - Zona industriale Noccole, 25050 Provaglio d'Iseo (BS)

+39 030 6850510 | +39 030 6850555
info@tecosrl.it | www.tecosrl.it

