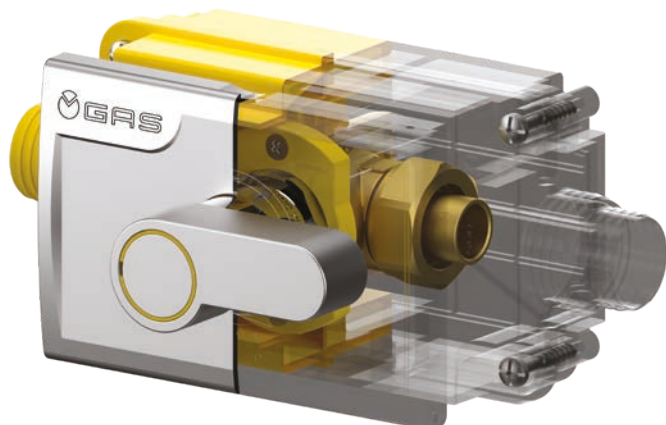


K164

FLUSH-MOUNTING GAS SHUT-OFF VALVE WITH LEVER

Data sheet
MCTW027.00 - 04/2019



- K164 compact shut-off valve
- Straight inlet and outlet
- With flush-mounting and accessible Sandwich box
- Connections with sheath that is gas-tight with respect to the wall and provide ventilation to the outside
- TECO Tapered Seal connection: heat resistant in the event of fire (HTB)
- The compact faceplates allow access to the shut-off valves
- The faceplate Design is suitable for exposed installation



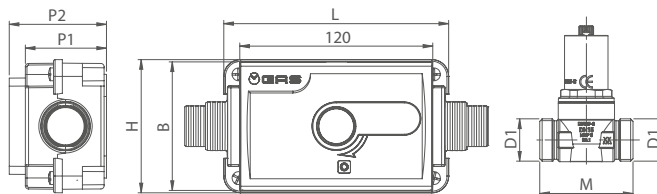
Material					
Body	Sandwich Box	Balls	Lever	Faceplates	Seats
Brass CW617	ABS	Brass CW617	Chromed ABS	Chromed ABS	NBR

TECHNICAL SPECIFICATIONS

Connections	Working pressure	Temperature	High temperature resistance	Standard and certification
TAPERED SEAL and ISO 228 M thread EN 10226-1 Female Thread	MOP 5	- 20 °C + 60 °C	(B01) 0,1 bar 650°C for 30min	DIN EN 331 DVGW

VERSIONS AND CODES

Flush-mounting gas shut-off cock with lever*

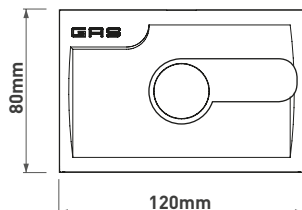


Code	DN	D1	D2	M	L	H	P1	P2	A	B	Pack
K113KC0100	15	TC3/4"	TC3/4"	58	140	83	51	61	120	80	10
K113KF0100	15	Rp1/2"	Rp1/2"	63	140	83	51	61	120	80	10

* Includes: fixing bracket, site protection cover, chrome plated faceplate and control lever. Does not include: fittings.

SPARE PARTS

K164 chrome plated faceplate + lever spare parts kit



Code	Finish	Pack
K1PL0001	Polished chrome	1

TECO Srl
Via Sandro Pertini, 39/41 - Zona industriale Noccole, 25050 Provaglio d'Iseo (BS)

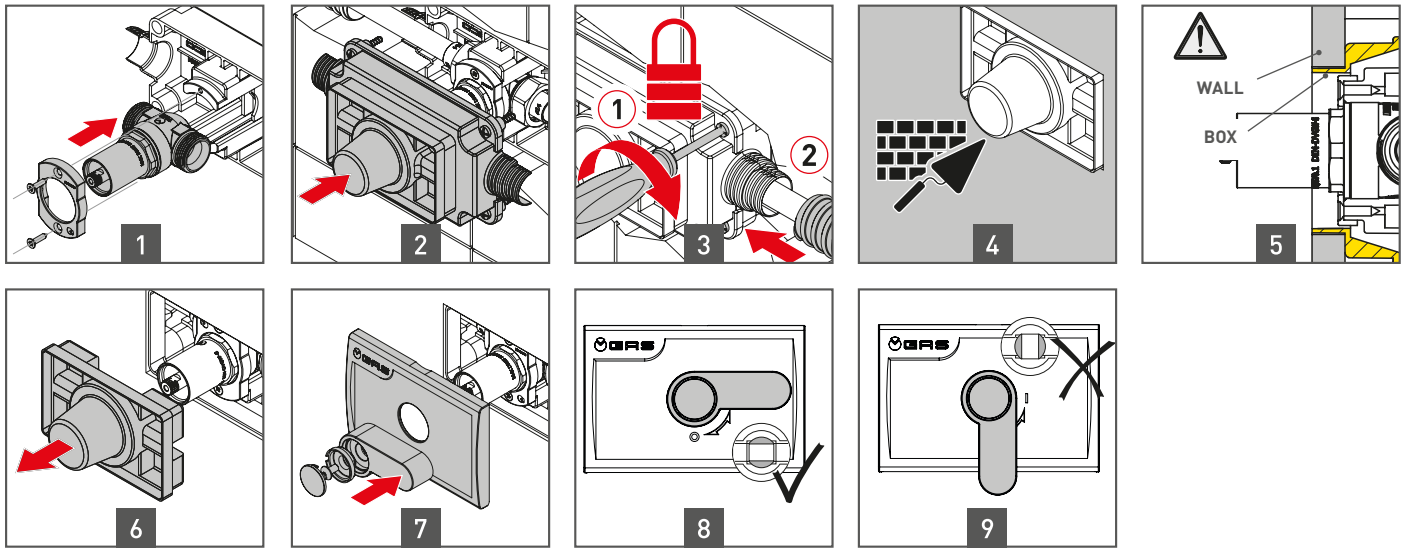
+39 030 6850510 | +39 030 6850555
info@tecosrl.it | www.tecosrl.it



OPERATION AND TECHNOLOGIES

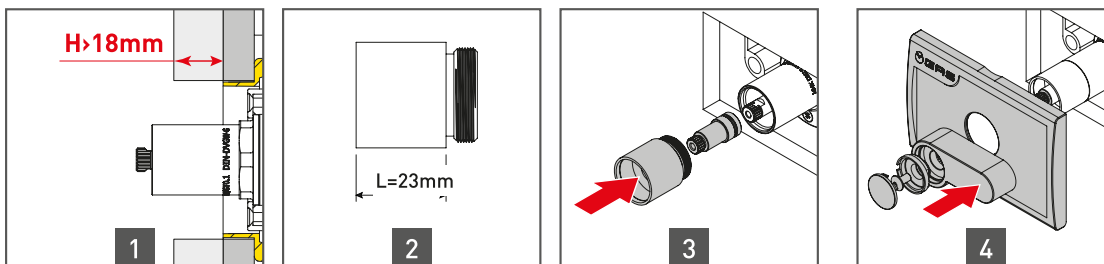
INSTALLATION

Assembly of the box, of the covering plate and lever.



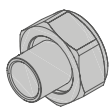
EXTENSION KIT

Whenever the adjustment of the plate is not enough (beyond 18mm) it is possible to extend the valve operation element (f.i. because of a high back panel behind the hob in the kitchen) of the with the dedicated extension kit L 23mm. More than one extension kit can be used on the same valve.

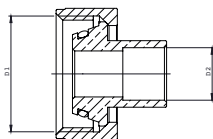


TC CONNECTION FITTINGS

Bronze soldered fittings



Fitting for soldered copper pipe connection that complies with EN 1254-5

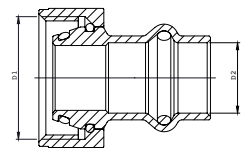


Code	D1 ISO228-1	D2	Pack
K2CS1201	TC 3/4"	ø12mm	10
K2CS1401	TC 3/4"	ø14mm	10
K2CS1501	TC 3/4"	ø15mm	10
K2CS1601	TC 3/4"	ø16mm	10
K2CS1801	TC 3/4"	ø18mm	10
K2CS2201	TC 3/4"	ø22mm	10
K0CS2202	TC 1"	ø22mm	5
K0CS2802	TC 1"	ø28mm	5

UNIPRESS® RG press-fit fitting

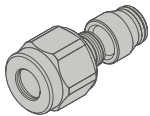


Fitting for press-fit copper pipe connection that complies with DVGW G5614 and UNI 11065.

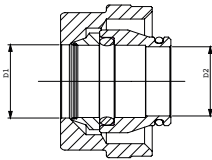


Code	D1 ISO228-1	D2	Pack
K2CP1501	TC 3/4"	ø15mm	10
K2CP1801	TC 3/4"	ø18mm	10
K2CP2201	TC 3/4"	ø22mm	10
K0CP2202	1"	ø22mm	5
K0CP2802	1"	ø28mm	5

Compression fitting

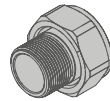


Compression fitting for copper pipe connection that complies with EN 1254-2

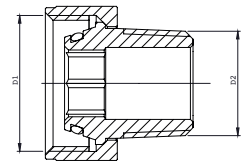


Code	D1 ISO228-1	D2	Pack
K0CR1401	TC 3/4"	ø14mm	10
K0CR1601	TC 3/4"	ø16mm	10
K0CR1801	TC 3/4"	ø18mm	10

Threaded fitting



Fitting for threaded connection that complies with EN 10226-1.



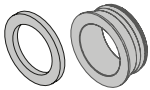
Code	D1 ISO228-1	D2 EN 1254-5	Pack
K0CF1201	TC 3/4"	1/2"	10
K0CF3401	TC 1"	3/4"	5



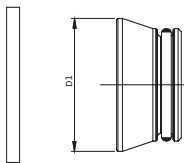
For multi-layer composite systems, the UNI 11344 standard permits the use of fittings provided by the pipe-fitting system manufacturer. Therefore, there are two possible solutions.

- TP** flat seal: Adapter to convert a tapered seal to a flat seal with gasket. Compatible with all fittings with an ISO228 swivel nut.
- F** threaded fitting: Threaded fitting + female press-fit fitting for multi-layer composite pipes.

Adapter for flat seal fittings



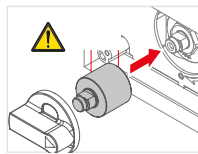
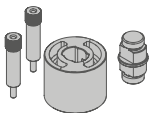
Adapter for connecting to all types of fittings with a FLAT SEAL with nut and gasket



Code	D1 ISO228-1	Pack
AP004001	TC 3/4"	10
AP005001	TC 1"	5

ACCESSORIES

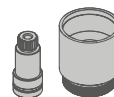
Modular extension kit 23mm



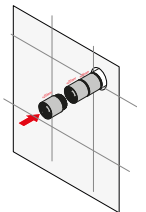
i SEVERAL EXTENSION KITS CAN BE APPLIED TO THE SAME VALVE

Code	Pack
KPR0001	1

Modular extension for 164K version 25mm

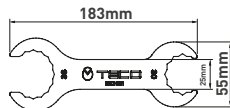
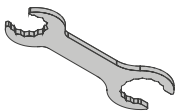


SEVERAL EXTENSION KITS CAN BE APPLIED TO THE SAME VALVE



Code	L (mm)	Pack
I4095000	23	20

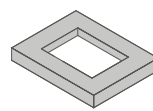
Installation spanner



i AIDS INSTALLATION AND MAINTENANCE OF K2 PRODUCTS.

Code	Pack
K0CH001	SW 30 - SW 38 spanner

Maintenance frame

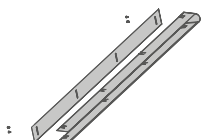


Dimensions
 150x100x20 mm B01
 215x160x20 mm C01
 250x160x20 mm D01

i THE MAINTENANCE FRAME IS USED WHEN THE BOX IS INSTALLED INCORRECTLY AND PROTRUDES FROM THE WALL.

Code	Pack
KRPL0004	B01 COMPATIBLE
KRPL0002	C01 COMPATIBLE
KRPL0005	D01 COMPATIBLE

Modular ducting for laying pipes in chases outside the building



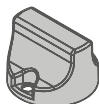
Serviceable metal ducting for laying pipes in chases outside the building. + galvanized sheet metal duct + cover complete with screws

Dimensions:
H750 x L50 mm x P70mm

Code	Pack
KA00K00001	10

SPARE PARTS

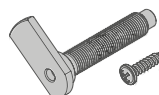
Handle



A01 *K2.0 SPARE PARTS (2009 -2017 PRODUCTION)

Code	Pack
K7MN0001	1
K2MN0001*	1

Faceplate adjustment kit C01



Adjustment kit (20mm)
pin + screws + o-ring (x2)

Code	Pack
KRPL0003	1

ITEM SPECIFICATIONS

K164: Flush-mounting gas valve

Ball valve that complies with the EN 331 standard, with the inlet and outlet at the sides, 3/4" tapered seal connections that comply with DIN 3439, complete with accessible sandwich box that is gas-tight and ventilated to the environment, and gas-tight sheath connections Brass body. Brackets and protection covers included. Closed and opened by operating a lever. Complete with faceplate that allows maintenance work.

Minimum temperature -20°C

Maximum temperature 60°C.

MOP 5

The connections are certified and guaranteed to seal at high temperature HTB 650°C x 30'.

