

Serie T4 T4 Series

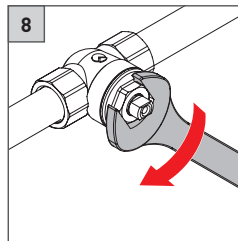
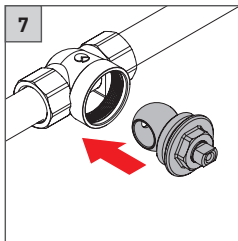
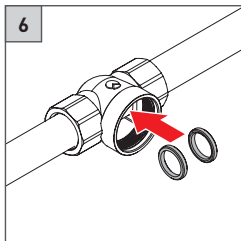
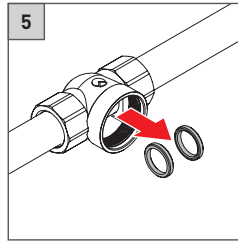
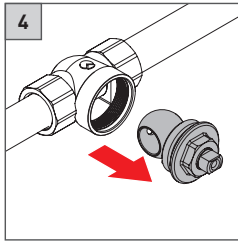
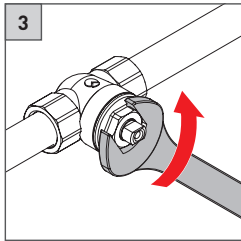
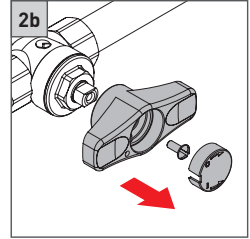
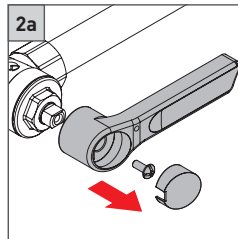
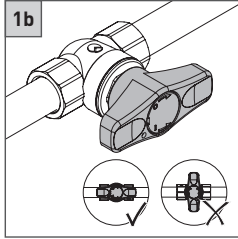
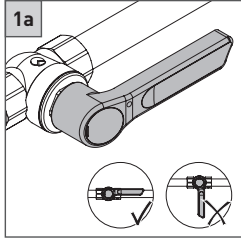
FI00035 R0 ©2013 NDT



via S. Caterina 8 - 25050
Carnignone di Passirano BS - ITALY
t. +39.030.68.50.510 - f. +39.030.68.50.555
www.tecosrl.it - info@tecosrl.it

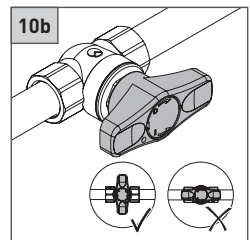
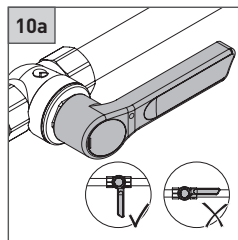
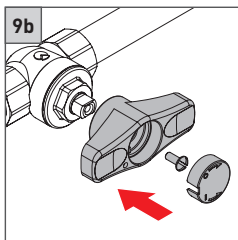
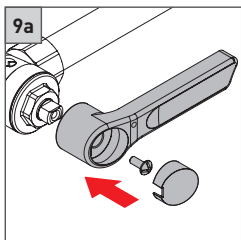
Manutenzione TECO-CONTROL

TECO-CONTROL Maintenance



⚠

DN15 Max.30Nm
DN20 Max.30Nm
DN25 Max.30Nm
DN32 Max.40Nm
DN40 Max.40Nm
DN50 Max.40Nm



IT

SPECIFICHE TECNICHE

Norma di riferimento	EN 13828
Pressione di esercizio	PN10
Temperatura di esercizio	max. 90°C

**DW-6102BR0165**

EN

TECHNICAL SPECIFICATIONS

Reference standard	EN 13828
Working Pressure	PN10
Working temperature	max. 90°C

**DW-6102BR0165****AVVERTENZE**

- Per ogni necessità di posa in opera, collaudo, montaggio e manutenzione di altri prodotti collegati, l'operatore deve fare riferimento alla normativa tecnica vigente e alle istruzioni specifiche dei prodotti.

GARANZIA**Le condizioni che regolano la garanzia sono:**

- Le condizioni di impiego, quali temperatura e pressione devono rientrare nei limiti delle caratteristiche tecniche del prodotto indicate nelle istruzioni d'uso.
- Non devono essere utilizzati materiali evidentemente difettosi (componenti crepati, scalfiti etc.).
- Ogni danneggiamento alla valvola o ad una qualunque parte della stessa rende necessaria la sostituzione immediata.
- Ogni alterazione o manomissione di qualunque parte della valvola porta alla cessazione immediata della garanzia.

TECO s.r.l. non si assume nessuna responsabilità per errori dovuti ad un'installazione non corretta della valvola o alla mancata interpretazione di questo foglio istruzioni.

INSTALLATION

- Please refer to the actual product standard and the related technical installation directives and practices valid in the country of use.

WARRANTY**Conditions concerning warranty are:**

- The operating conditions such as temperature and pressure must be within the limits of the technical features of the product as indicated in the instructions
- There must not be used obviously defective materials (components cracked, scratched etc.).
- Alterations to any part of the product shall mean that the product is no longer in conformity with this standard and the product warranty automatically decays.

TECO s.r.l. does not take any responsibility as far as installation mistakes, or the missing observation of this instruction sheet .