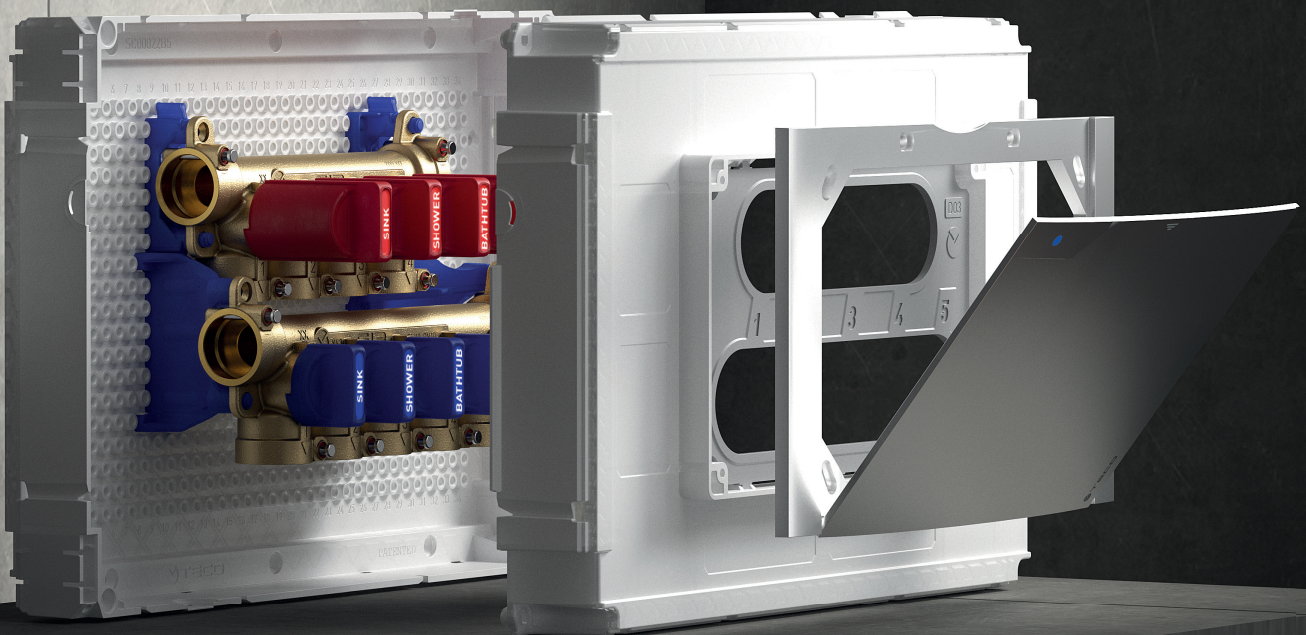


K4.3

NEWS

PRE-ASSEMBLED FLUSH-MOUNTING MULTIPLE
SHUT-OFF DOMESTIC WATER MANIFOLD KIT

AS BEFORE,
MORE THAN BEFORE



K4.3

NEWS

PRE-ASSEMBLED FLUSH-MOUNTING MULTIPLE SHUT-OFF DOMESTIC WATER MANIFOLD KIT

As before, more than before

MORE COMPACT

THE NEW BOX WITH FASTEC ELBOWS PERMITS A SMALLER INSTALLATION SPACE

MORE OUTLETS

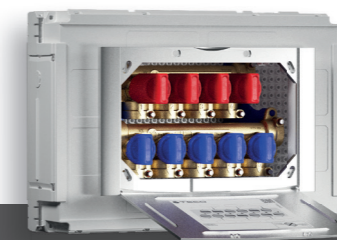
NEW VERSION UP TO 7+6 OUTLETS

MORE CONFIGURATIONS

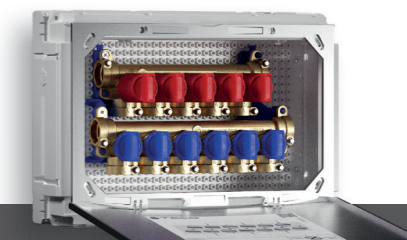
THANKS TO FASTEC ADAPTERS



Version with 4+3 outlets



Version with 5+4 outlets



NEW version with up to 7+6 outlets*

*Expandable by adding Fastec T or Boost valve

FEATURES

- **K4.3 compact flush-mounting domestic water distribution manifold kit.**
- Shut-off valves on the individual outlets.
- Different configurations **up to 7 cold + 6 hot outlets.**
- **Design faceplate** with **magnetic closure**, available in a range of finishes.
- Full port valves **with removable ball** and **"Soft Turn" ANTI-JAMMING** control.
- **Pre-assembled** in a serviceable sandwich box with knock-outs on all four sides.
- Identification of utilities with stickers to be applied to the control hand wheel or inside the faceplate.
- Pipe connections using the fast system **FASTEC®**

APPLICATIONS

- For hot and cold drinking water
- Renovations / new buildings
- Plasterboard/masonry walls. Minimum thickness 10 cm

TECHNICAL DATA

Pressure: PN 10 (10 bar)

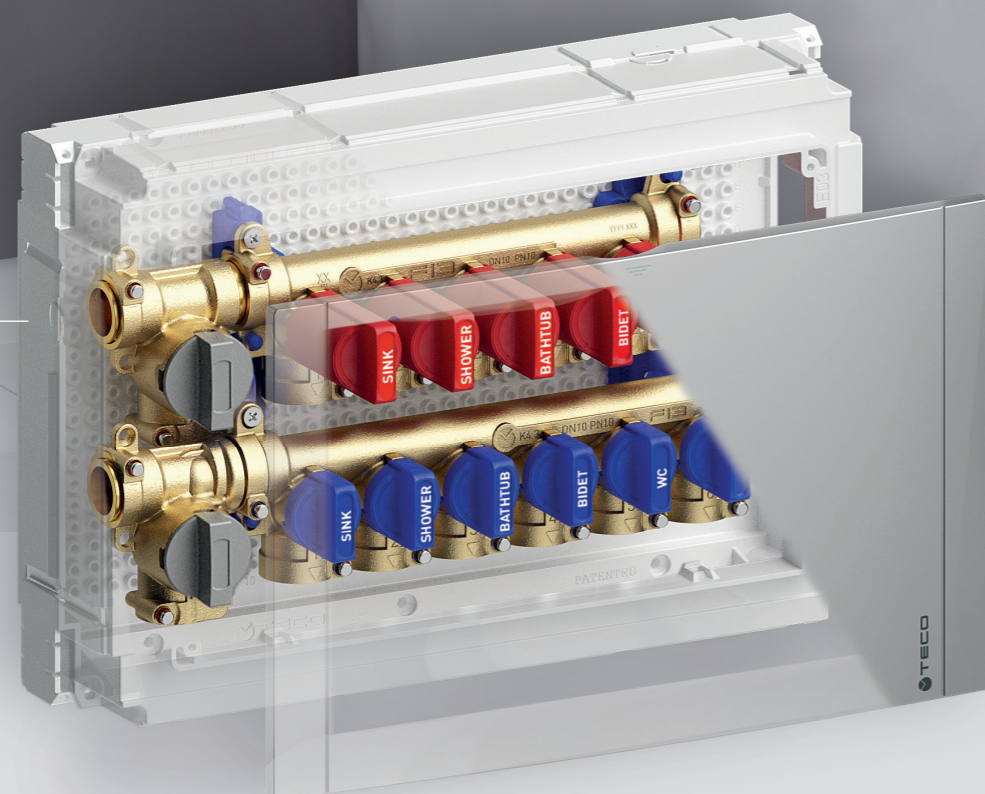
Temperature: + 5 °C / + 90 °C

Valve certification: DIN DVGW EN 13828

Material certification: KTW-BWGL



Patent pending



NEW K4.3 MANIFOLD: MORE SPACIOUS, MORE VERSATILE



PRE-ASSEMBLED

The manifolds are supplied pre-assembled for simple, solid and orderly installation with a significant time benefit.

NEWS

COMPACT AND FLEXIBLE

MORE SPACIOUS SANDWICH BOX.

The larger size of the box makes various installations possible with Fastec fittings, adapters and valves positioned directly inside the box.

FASTEC®

SIMPLE AND SECURE PLUMBING CONNECTION

Thanks to the Fastec connection, the system can be implemented in a flexible and compact manner.

DESIGN FOR EVERY ENVIRONMENT

The innovative design of the K series faceplate integrates perfectly with any living environment.

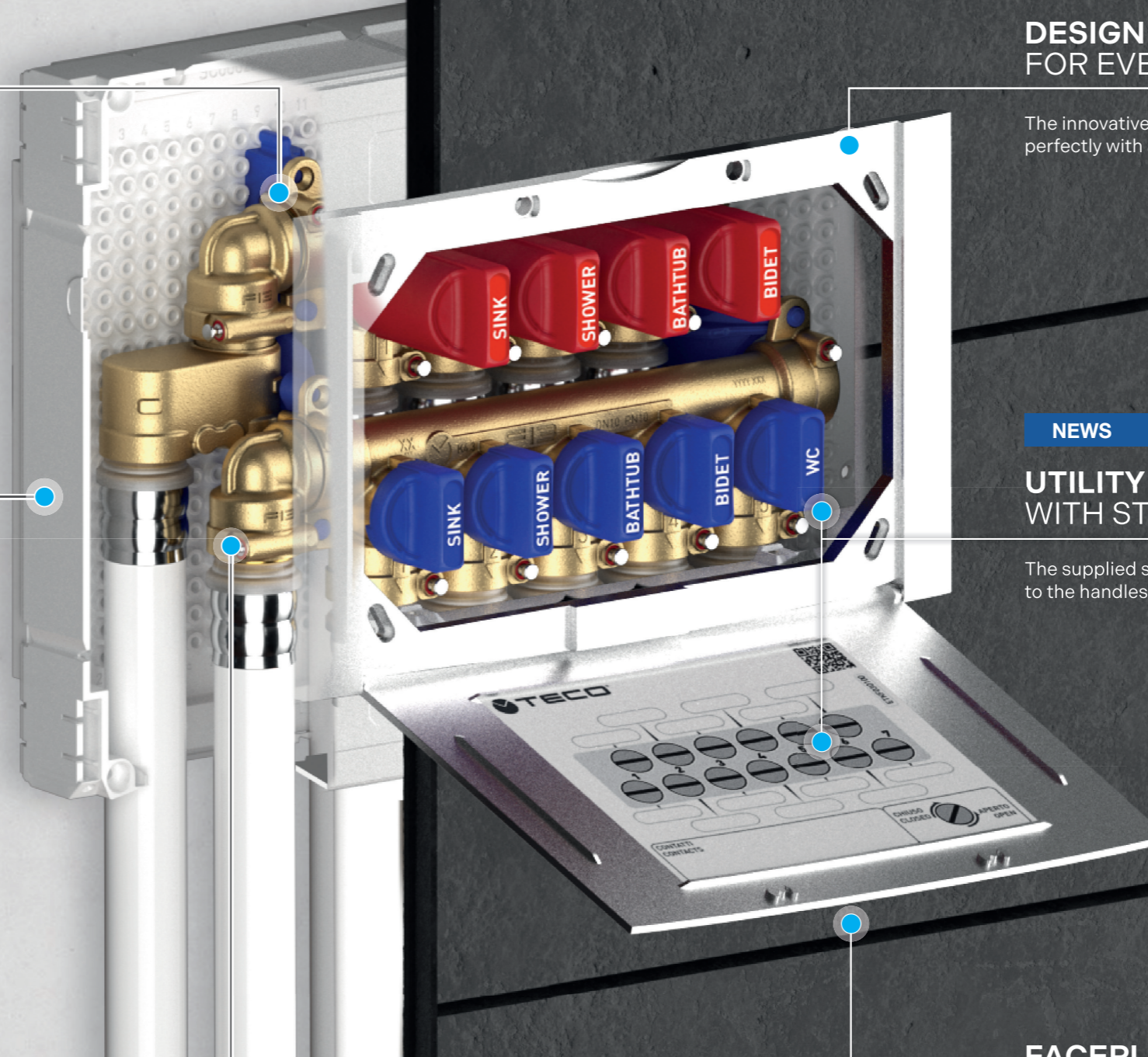
NEWS

UTILITY IDENTIFICATION WITH STICKERS

The supplied stickers allow labels to be applied to the handles when connecting the pipes.

FACEPLATES

Faceplates with convenient magnetic opening/closure.

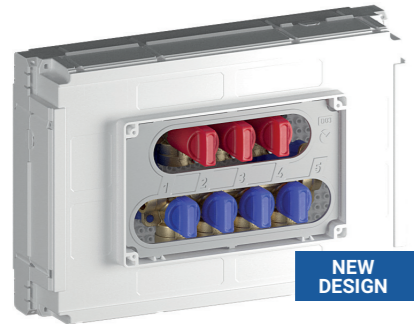


RANGE

K4.3 MANIFOLD KIT

NEW RANGE

Flush-mounting multiple shut-off manifold kit with 4+3 and 5+4 outlets



NEW DESIGN

Includes:

- Pair of DN10 manifolds with individual shut-off valves
- Box 310 x 210 x 85 mm
- Fixing bracket
- Site protection cover
- Stickers for utility identification

Does not include:

- Cover flap **D03** (see below)
- Fastec fittings (page 8)

Kit code	Cold outlets	Hot outlets	DN	Connections	Pack
				FASTEC®	
K403DF10200	4	3	DN10	F13	5
K403DF10100	5	4	DN10	F13	5

See page 8

Flush-mounting multiple shut-off manifold kit with 6+5 outlets



NEW 2023

Includes:

- Pair of DN10 manifolds with individual shut-off valves
- Box 310 x 210 x 85 mm
- Fixing bracket
- Site protection cover
- Stickers for utility identification

Does not include:

- Cover flap **E03** (see below)
- Fastec fittings (page 8)

Kit code	Cold outlets	Hot outlets	DN	Connections	Pack
				FASTEC®	
K403EF10100	6	5	DN10	F13	5

See page 8

Application examples

Inlet from below or above

Downward recirculation configuration

RF12210100

KA00F10001

KA00K00002

Tight spaces:
The new design of the K4.3 allows for inlets from below or above within the box.

UTILITY EXTENSION: possible combinations with K4.3 manifold up to 7+6 outlets

The 6+5 manifold can be adapted to various requirements with up to a maximum of 7+6 outlets, thanks to the addition of the Fastec T-valve.

Valve T - SX	DN	Connections	KV*	Pack
		FASTEC®		
T4P12C2100	DN10	F13	4.0	5

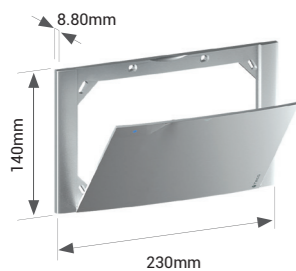
See page 8

*Flow rate m³/h for a pressure drop of 1 bar.

No. of additional T-valves	Cold outlets	Hot outlets
x2	7	6
x1	6	6
x1	7	5

Main shut-off valves can also be fitted (page 9)

D03 Faceplate with magnetic door for K4.3 with 4+3 and 5+4 outlets



Door dimensions D03:

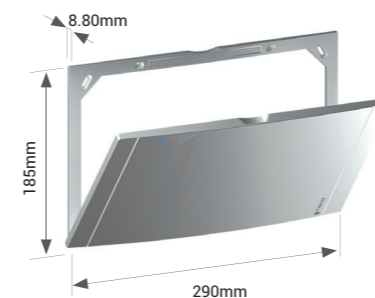
230 x 140 x 8.80 mm

Accessories:

- Fixing screws

Code	Finish	Pack
KPLD0301600	White	5
KPLD0301M00	Polished chrome	1
KPLD0301800	Silver	1
KPLD0301A00	Black Soft Touch	1

E03 Faceplate with magnetic door for K4.3 with 6+5 and 7+6 outlets



Door dimensions E03:

290 x 185 x 8.80 mm

Accessories:

- Fixing screws

Code	Finish	Pack
KPLE0301600	White	5
KPLE0301M00	Polished chrome	1
KPLE0301800	Silver	1
KPLE0301A00	Black Soft Touch	1

ADAPTERS AND FITTINGS FASTEC



F13 Adapters

Code	Description	Pack
RF12210100	F13 90° M / F	10
RF12310100	F13 T M / F / F	5
KA00F10001	Dual joint Twin F / F / M	10
KA00K00002	F13 Plug M	10

F13 Threaded fittings

Code	Description	Pack
KA00K00003	F13 M x 1/2" M	10
KA00K00013	F13 M x 3/4" M	10
RF12101000	F13 M x 1/2" F	10
RF12111000	F13 M x 3/4" F	10
KA00K00004	F13 M x EK 3/4" F	10
RF122F0100	F13 90° M x 1/2" M	10
RF122F0200	F13 90° M x 1/2" F	10

F13 Fittings for PEX pipes

Code	Pipe Ø x Thickness	Pack
RF12100100	F13 16 x 1.8	10
RF12100200	F13 20 x 1.5	10
RF12100300	F13 25 x 2.3	5
RF13M1210301	F13 12 x 1.1	10
RF13M1610301	F13 16 x 1.5	10
RF13M2010301	F13 20 x 1.9	10
RF13M1210401	F13 12 x 1.1	10
RF13M1610401	F13 16 x 1.5	10
RF13M2010401	F13 20 x 1.9	10

F13 Fittings for multi-layer pipes

Code	Pipe Ø x Thickness	Pack
RF13M16101VA	F13 16 x 2.0	10
RF13M16102VA	F13 16 x 2.25	10
RF13M20101VA	F13 20 x 2.0	10
RF13M20102VA	F13 20 x 2.5	10
RF13M26101VA	F13 26 x 3.0	5
511115MP	F13 16 x 2.0	5
511116MP	F13 16 x 2.25	5
511118MP	F13 20 x 2.0	5
511119MP	F13 20 x 2.25	5
511120MP	F13 20 x 2.5	5
511121MP	F13 25 x 2.5	5
511122MP	F13 26 x 3.0	5
1651039	F13 16 x 2.0	10
1651040	F13 20 x 2.0	10
1651041	F13 26 x 3.0	5
39342	F13 16 x 2.0	10
39344	F13 20 x 2.0	10

F13 Fittings with Fastec connection for multi-layer pipes available from manufacturers

Pipe Ø 16-20

Pipe Ø 16-20-26

Pipe Ø 16-20-26

+GF+

ALUPEX EXPRESS

Pipe Ø 16-20

JRG SANIPEX MT

Pipe Ø 16-20

LOGO

Pipe Ø 20

FLEX

Pipe Ø 16-20-25

F13 KV 5.8 BOOST Valves

Code	DN	Connection		KV**	Pack
		FASTEC®			
T4P32C2100	DN15	F13	F / M / F	5.8	10
*T4P32C3100	DN15	F13	M / F / F	5.8	10

* For main RIGHT-HAND shut-off.
** Flow rate m³/h for a pressure drop of 1 bar.

Application examples for K4.3 6+5 manifold with FASTEC KV 5.8 BOOST valve

The BOOST valve can be used as a main shut-off (Example A), or to convert a 6+5 manifold into 7+6 with a higher flow rate outlet (Example B).

A Main shut-off

KA00K00002

B Increased utilities

T4P32C2100

FASTEC® THE FAST AND SECURE PLUMBING CONNECTION

Plumbing connection with pin locking.

1. Insert the fitting with the pin raised.
2. Lower the locking pin to secure the connection.

F13 DN 15 Equivalent to 1/2"

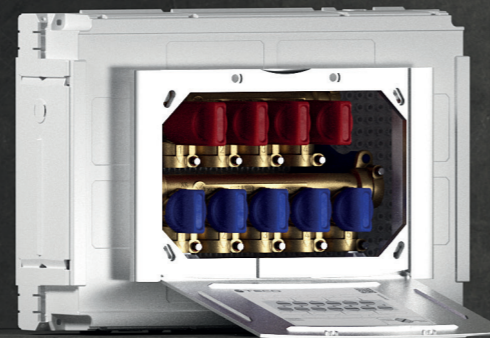
A COMPLETE RANGE FOR PRE-ASSEMBLED FLUSH MOUNTING

MANIFOLDS



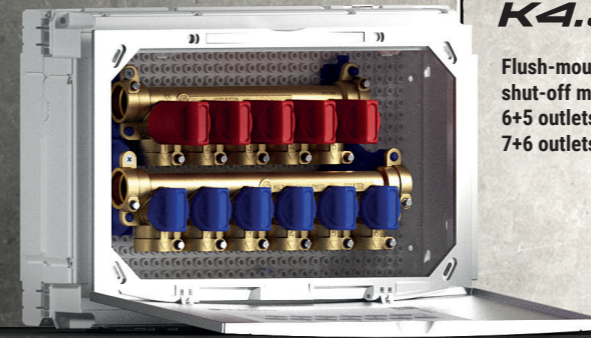
K4.3

Flush-mounting multiple shut-off manifold kit with 4+3 outlets.



K4.3

Flush-mounting multiple shut-off manifold kit with 5+4 outlets.



K4.3

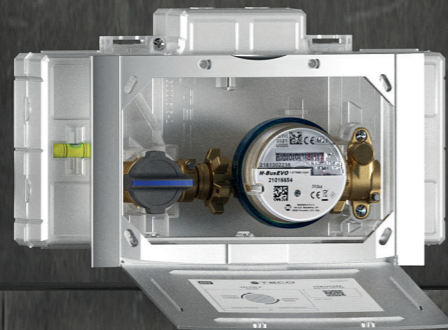
Flush-mounting multiple shut-off manifold kit with 6+5 outlets (expandable to 7+6 outlets).



K4.2

Domestic water manifold kit with flush-mounting main shut-off valve.

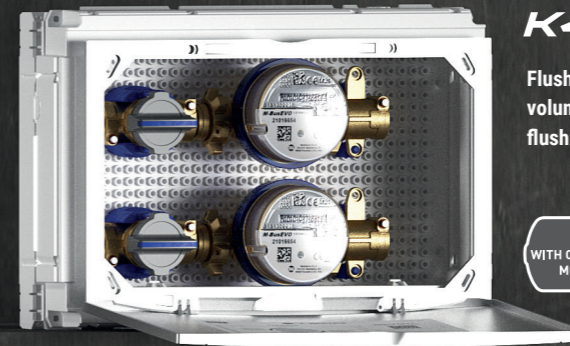
METERS



K4CCMONO

Flush-mounting metering kit with single volumetric meter or with 80 mm flushing pipe.

WITH OPTIONAL MOTOR



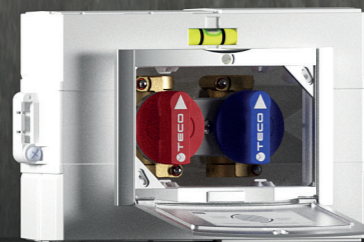
K4CCDUO*

Flush-mounting metering kit with two volumetric meters or with 80 or 110 mm flushing pipes.

*Available from March 2024

WITH OPTIONAL MOTOR

VALVES



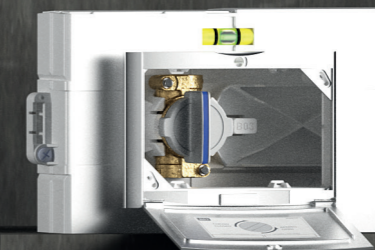
K4.0

Kit with dual flush-mounting shut-off valve.



K4.1

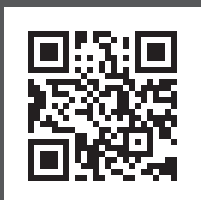
Single shut-off kit with "U" inlet and outlet



K4.1

Single shut-off kit with valve for optional motor.

WITH OPTIONAL MOTOR



Via Sandro Pertini no. 39/41
25050 Provaglio d'Iseo (BS), Italy
Tel. +39 030 6850510 | +39 030 6850555

info@tecosrl.it - www.tecosrl.it

 made in Italy since 1987

