

EXTENDER

TELESCOPIC JOINT

Technical sheet
MCTW043.00 - 06/2024



CHARACTERISTICS

- Extender is the first universal telescopic joint.
- Quick and safe connection without tools.
- Unbeatable in tight spaces.
- Sealing ensured by O-ring with static (controlled) predefined compression.
- Wide range of fittings, adapters and valves to suit many system solutions.
- Rotatable.
- Non-removable fixing pin.

FIELD OF APPLICATION/USE

- For cold and hot drinking water.
- For cooling and heating water with or without antifreeze.
- For external and concealed installations.

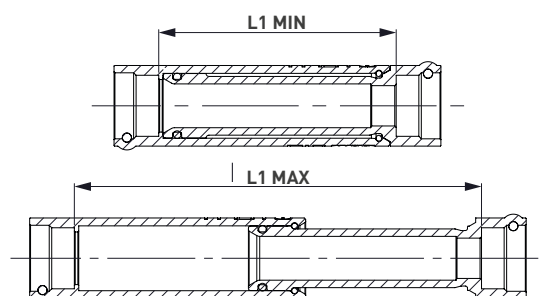
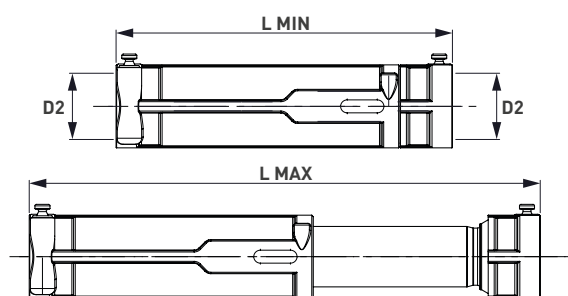
Technical specifications

Reference standards	Connections	Operating pressure	Operating temperature	Tensile strength	Testing	Bending strength
DVGW W534	FASTEC	PN16 (16 bar) MAX 50 bar	+5 °C / +95 °C	250 kg	100%	60 kg (45 Nm)

Material

Body	Looking Pin	O-Ring
Forged Brass CW617N sandblasted steel	Nickel-plated CW617N Brass	EPDM Perox 70 ShA

CERTIFICATIONS



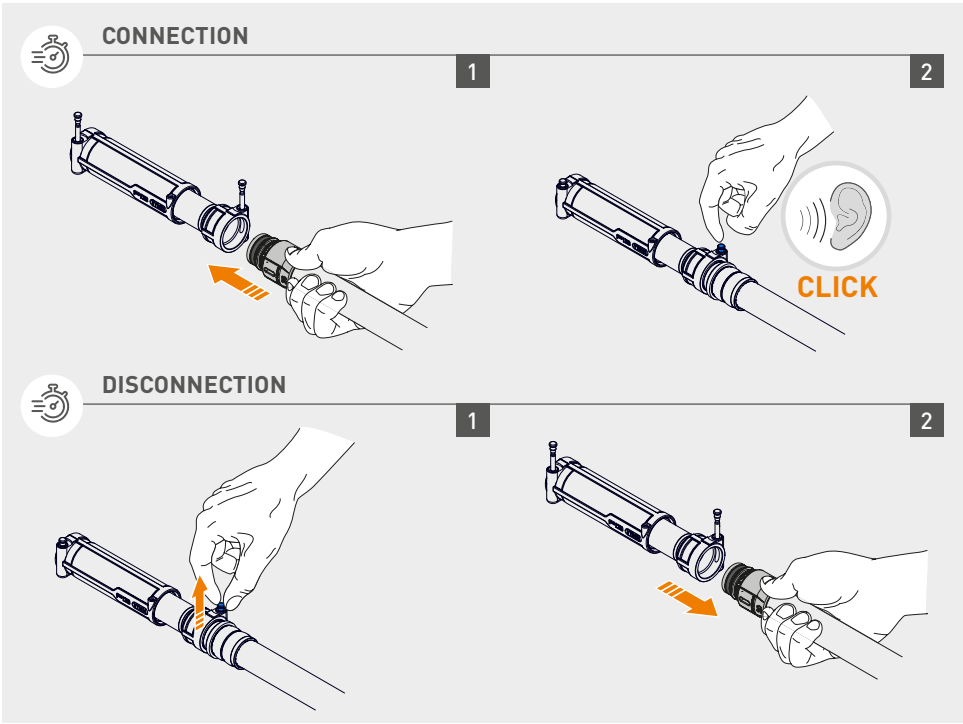
Code	Description	L MIN	L MAX	L1 MIN	L1 MAX	Conf.
RF12110300	F13 F	112	170	81	139	10
RF22120200	F14 F	126	190	88	152	10

TECO srl
Sandro Pertini (Street), 39/41 - Noccole (Industrial Area), 25050 Provaglio d'Iseo (BS)

+39 030 6850510 | +39 030 6850555
info@tecocrsrl.it | www.tecocrsrl.it



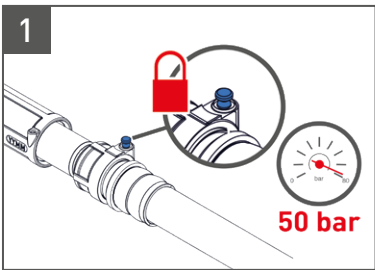
CONNECTION / DISCONNECTION EXTENDER



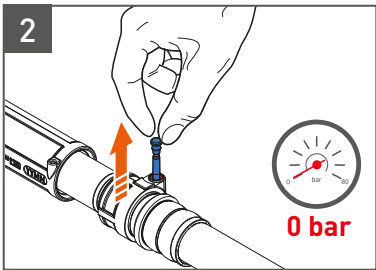
WARNINGS

- Quick, easy and secure connection: the locking pin is attached to the body; can not be lost if the fitting is correctly connected. The correct connection is confirmed by a CLICK once the pin is lowered.
- The FASTEC® range of fittings allows you to connect pipes of different materials, diameters and sizes.
- With the system in operation and under pressure **it is not possible to remove the pin.**

TECHNICAL FEATURES




It is not possible to extract the pin if the system is under pressure. The PIN remains blocked even if there is low pressure in the system. The FASTEC®connections are designed to withstand a pressure of to 50 bar without any mechanical deformation.

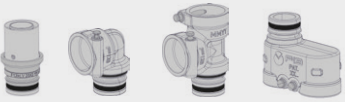



The PIN can be operated and the fitting can only be disconnected if the system is pressure-free (0 bar).

OPERATION AND TECHNOLOGIES

**FASTEC**
STORE

Check the FASTEC PRODUCT RANGE of valves, manifolds and fittings.





GO TO THE WHOLE FASTEC RANGE

CONNECTION:

COMPARISON TABLE			
FASTEC® CONNECTIONS	TRADITIONAL CONNECTIONS		
	DN	INCHES	MULTILAYER / PEX PIPE
F13	15	1/2"	Ø 12 - 16 - 20 - 25 - 26
F14	20	3/4"	Ø 26 - 32

SPECIFICATION TEXTS

EXTENDER: Telescopic joint
Universal telescopic joint, brass body with guaranteed seal through O-Ring with predefined static compression (controlled). Quick coupling connections with technology FASTEC F13 and F14, anti-extraction locking pin. Operating pressure PN16 (16 bar). Maximum pressure 50 bar. Operating temperature +5 °C ÷ +95 °C.