

VALVES FOR GAS APPLIANCES WITH BAYONET CONNECTION FOR FLEXIBLE PIPES VERSION WITH HANDLE



FEATURES

- Shut-off valve with front handle for flexible pipes.
- The bayonet connection ensures a safe connection and disconnection of the pipe.
The pipe can only be connected or disconnected when the valve is closed, and the valve does not open if the pipe is not correctly inserted.
- The valve is supplied with an integrated **FIREBAG® thermal safety device** that blocks the gas flow in case of fire.
- The R2 valve can also be installed outdoors with temperatures down to -20 °C.



APPLICATIONS

- Suitable for all types of gas as specified in the EN 437 and DVGW G260:2013 standards (Methane, Butane, Propane).

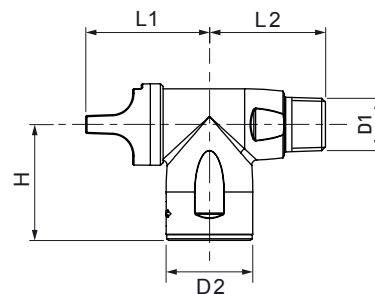
Technical Specifications

Connections	Working pressure	Temperature	High temperature resistance	Standard and certification	Activation temperature FIREBAG®	Maximum power
Thread Rp EN 10226-1 DIN 3383-1 DIN 3383-4 (laboratory)	MOP 0.5 (0.5 bar)	-20 °C +60 °C	HTB 0.5 bar 650 °C x30' (GT 0.5)	DIN EN 15069:2008 DIN 3586 EN 14800 (Bt flex flexible pipe)	100 °C - 5K	16 kW

Material

Body	Ball	Seats	O-Ring	Handle
Hot Forged Brass CW617N polished chrome	CW617N	NBR	NBR	PA6 (Polyamide), colour YELLOW

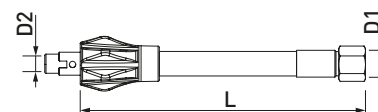
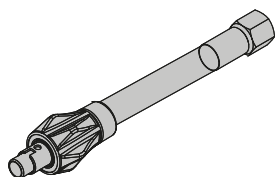
R2 90° valve for gas appliances



Code	DN	FIREBAG [®] TAE	Version	D1	D2	H	L1	L2	M	SW	Pack
R221100100	12	•		Rp 1/2"	DIN 3383-1	32	49	45	32	25	20

i Version without FIREBAG[®] available on request.

RTD Flexible pipe DIN-EN14800:2007 for valves for gas appliances



Code	Length (mm)	Connections		Pack
		D1	D2	
R4TD0500	500	Rp 1/2"	DIN 3383-1	1
R4TD0800	750	Rp 1/2"	DIN 3383-1	1
R4TD1000	1000	Rp 1/2"	DIN 3383-1	1
R4TD1250	1250	Rp 1/2"	DIN 3383-1	1
R4TD1500	1500	Rp 1/2"	DIN 3383-1	1
R4TD2000	2000	Rp 1/2"	DIN 3383-1	1

Material:

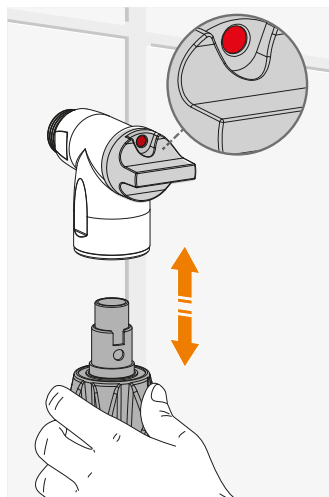
- Stainless steel tube AISI 321
- Transparent PVC protective sheath
- AISI 304 stainless steel nut
- Handle PA 6

TECO Srl
Via Sandro Pertini, 39/41 - Zona industriale Noccole, 25050 Provaglio d'Iseo (BS)

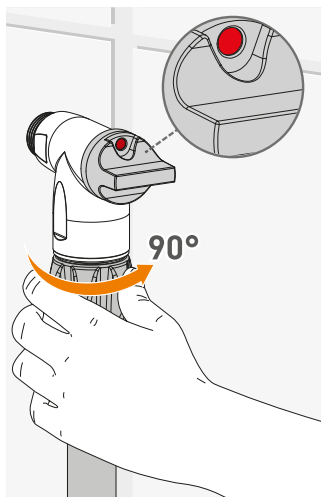
+39 030 6850510 | +39 030 6850555
info@tecosrl.it | www.tecosrl.it



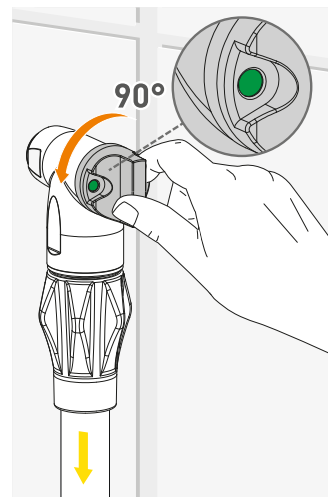
CONNECTION SAFE



FAST and SECURE tube insertion. The pipe can only be disconnected when the valve is closed.



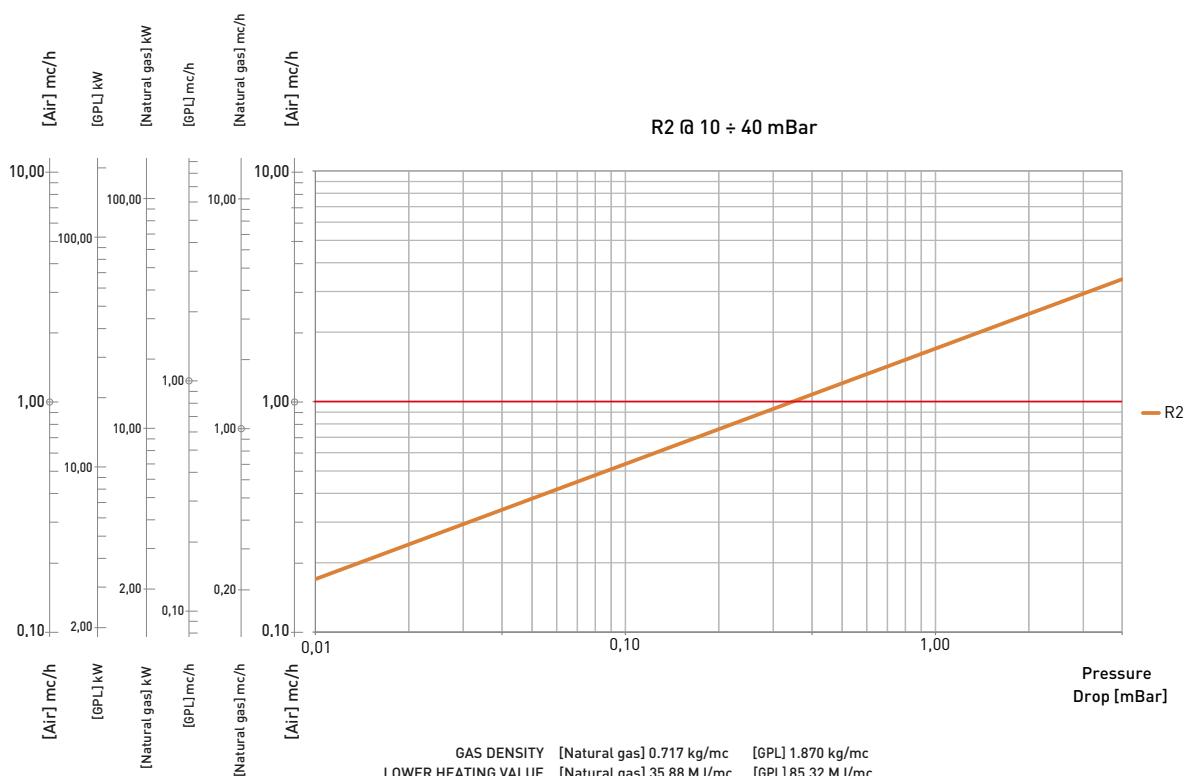
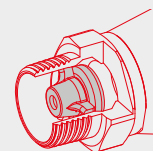
By rotating the handle of the pipe 90°, it locks to the valve, allowing opening only in this position.



Opening and closing of the valve through the handle with front grip.

FIREBAG® - TAE

The valve is equipped with a FIREBAG® thermal safety device integrated into the steel inlet fitting. The FIREBAG is compliant with the **DIN 3586** standard and activates at a temperature of 100 °C -5K and withstands up to 650 °C for 30', for a maximum working pressure of 5 bar.



SPECIFICATION TEXT

R2: Valves for gas appliances with bayonet connection for flexible pipes - version with handle

Shut-off valve with front handle certified EN15069 and quick bayonet connection DIN 3383-1 compatible with pipes conforming to the EN 14800. Handle with open/closed indicators with a locking system associated with the correct insertion of the tube. Equipped with FIREBAG® thermal safety system.