

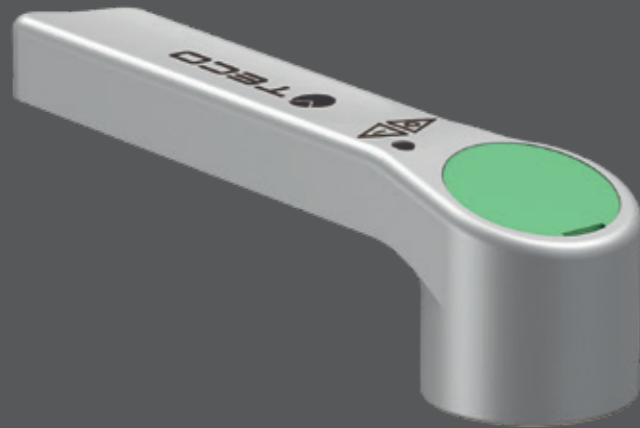
"TOP ENTRY" BALL VALVE FOR PLASTIC PIPES

T4 MULTI-CLAMP - T4 PP-R

"SOFT TURN" ANTI-JAMMING TECHNOLOGY
"TOP ENTRY" REMOVABLE BALL
SINGLE-PIECE BODY



FIND OUT MORE



T4 PP-R



T4 MULTI-CLAMP

APPLICATIONS

- For hot and cold drinking water.
- For cooling and heating water with or without antifreeze.
- For compressed air.
- Vacuum packing.

TECHNICAL DATA

Temperature	Multi-clamp version +5 °C ÷ +95 °C PP-R version +70 °C
Pressure	PN 10 (10 bar)
Connections	Multi-clamp (multi-layer pipes) PP-R (PP-R pipes)
Reference standards	DIN EN 13828 W570-1 KTW-BWGL ACS PZH

FEATURES

- **Water shut-off valves for plastic pipes.**
- **"Soft Turn" anti-jamming technology** to ensure jam-free operation even after long periods of inactivity without the need for periodic activation.
- **"Top Entry"**: ball and seals can be replaced after the valve has been installed.
- T4 multi-clamp with single-piece body and integrated connections for Ø16, Ø20, Ø26 and Ø32 multi-layer pipe.
- T4 PP-R with single-piece body and integrated connections for Ø20, Ø25, and Ø32 PP-R pipe.



T4 "TOP ENTRY" BALL VALVE FOR PLASTIC PIPES



T4 MULTI-CLAMPS version for multi-layer pipes

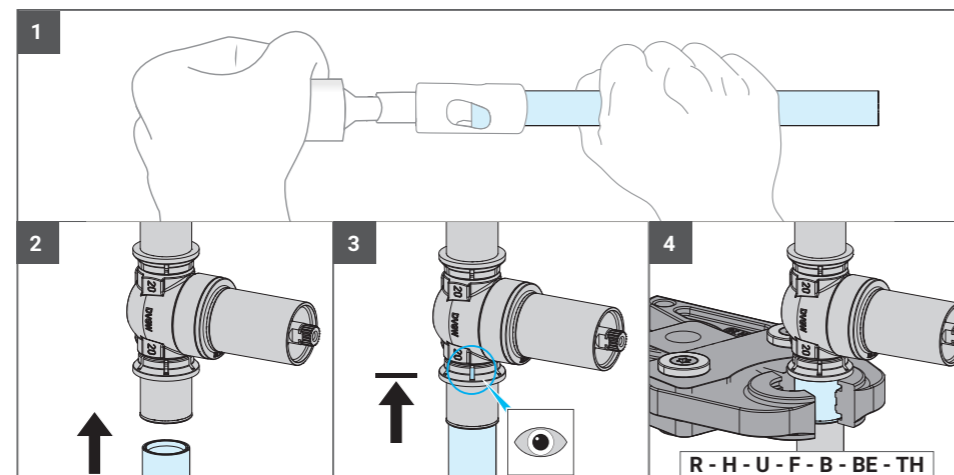
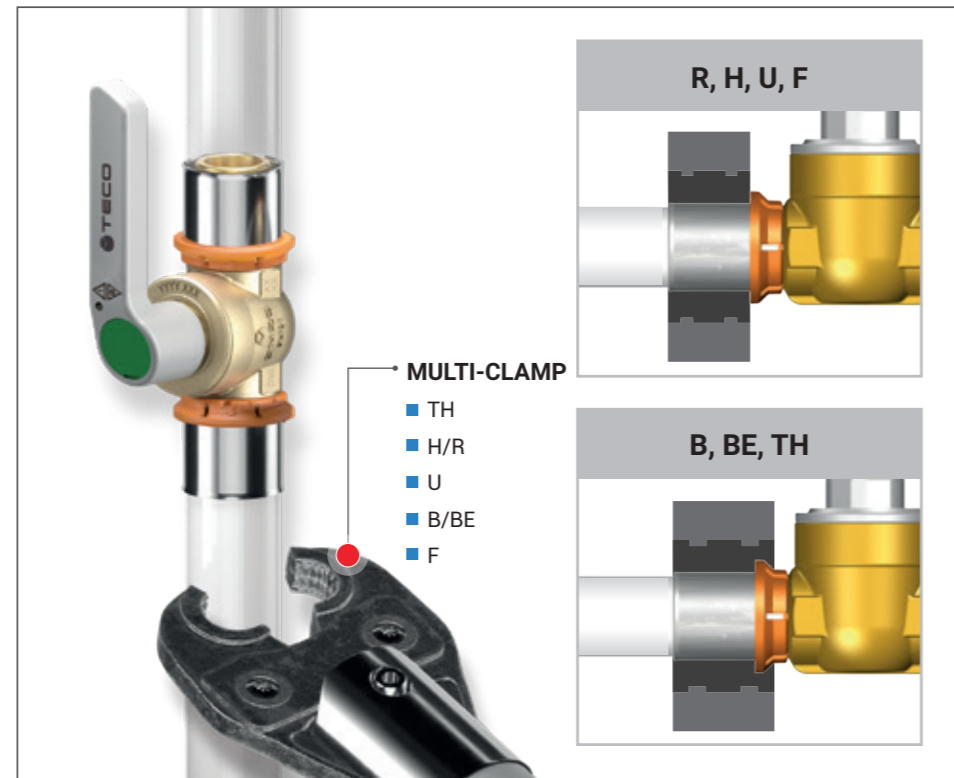


NEW

Includes:

- 1 valve with removable ball and connections for multi-layer pipe
- Control lever

Code	DN	Connections	Pack
		Pipe Ø x Thickness	
T4P0CB01100	DN8	16 x 2	20
T4P3CB01100	DN15	20 x 2	20
T4P3CB02100	DN15	26 x 3	20
T4P4CB01100	DN20	32 x 3	15



T4 PP-R straight valve for PP-R pipes



NEW

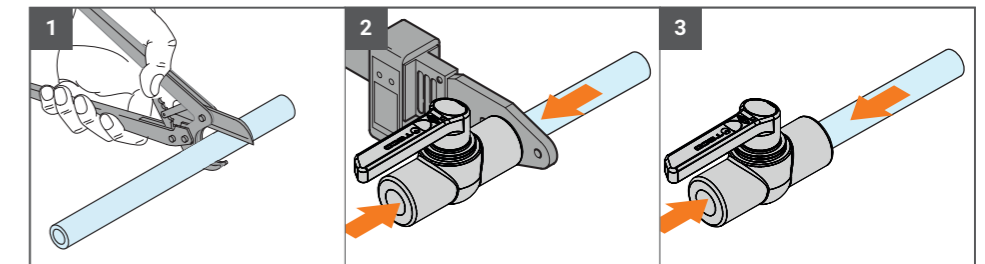
Includes:

- 1 valve with removable ball and connections for PP-R pipe
- Control lever

Code	DN	Colour	Connections	Pack
			PP-R	
T403983V00	DN15	●	Ø20	20
T403982V00	DN15	●	Ø25	20
T404981V00	DN20	●	Ø32	20

i Other colours available on request.

THE "TOP ENTRY" PP-R SERIES OF VALVES IS COMPATIBLE WITH ALL PP-R PIPES (Polypropylene Random Copolymer) MANUFACTURED IN ACCORDANCE WITH THE EN ISO 15874 STANDARD



To make the connections quickly and correctly, it is essential to use tools that comply with the DVS2207 standards. The welding procedure must comply with the DVS2207-2208 joint standards.

Spare parts for T4 MULTI-CLAMP and T4 PP-R

See page 172 or visit the website for all product information.

