

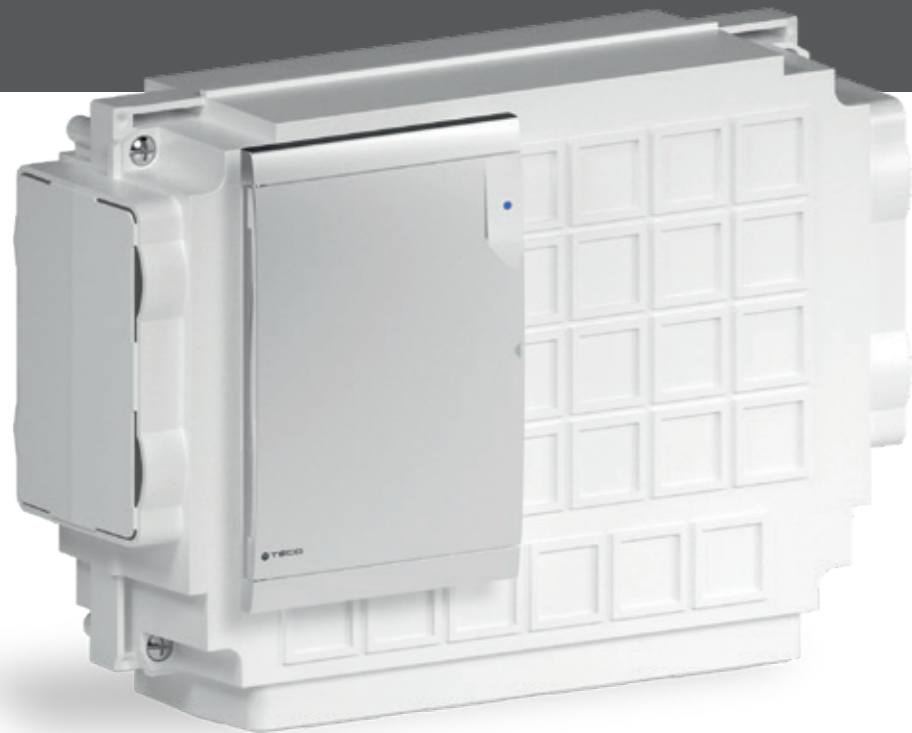
DOMESTIC WATER MANIFOLD KIT WITH FLUSH-MOUNTING MAIN SHUT-OFF VALVE

K4.2

COMPACT
PRACTICAL TO INSTALL
"SOFT TURN" ANTI-JAMMING TECHNOLOGY
"TOP ENTRY" REMOVABLE BALL



FIND OUT MORE



K4.2 Domestic water manifold kit with flush-mounting main shut-off valve



APPLICATIONS

- For hot and cold drinking water.
- For cooling and heating water with or without antifreeze.
- Suitable for installation in masonry and plasterboard constructions (**minimum thickness 100 mm**).

TECHNICAL DATA

Temperature	+5 °C ÷ +95 °C
Pressure	PN 10 (10 bar)
Connections	Fastec
Reference standards	DIN EN 13828 W570-1 KTW-BWGL ACS PZH

FEATURES

- **Compact flush-mounting domestic water manifold kit with general shut-off function.**
- DN15 "Top Entry" valve with full flow, removable ball and "Soft Turn" anti-jamming technology, even after long periods of inactivity without the need for periodic activation.
- **Pre-assembled in a serviceable sandwich box** with knock-outs on the sides.
- **Design faceplate**, small with magnetic closure and a range of available finishes.
- **FASTEC®** fast system connections.
- Inlets and outlets expandable by using FASTEC TWIN fittings.



K4.2 DOMESTIC WATER MANIFOLD KIT WITH FLUSH-MOUNTING MAIN SHUT-OFF VALVE



K4.2 domestic water manifold kit with flush-mounting main shut-off valve



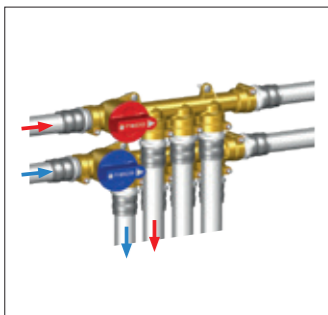
Includes:

- 2 Manifolds with general shut-off on the hot and cold inlets
- Box 260 x 180 x 85 mm
- Fixing brackets
- Site protection cover



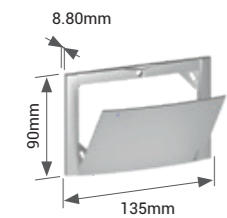
Does not include:

- Cover door **B03**
- Fastec fittings (page 38)



Kit code	Cold water outlets	Hot water outlets	DN	Connections	Pack
K402BF10100	5	4	DN15	FASTEC® F13	5
See page 38					

B03 Faceplate with magnetic closure for K4.2



Includes:

- Fixing screws

Code	Finish	Pack
KPLB0301600	White	10
KPLB0301M00	Polished chrome	5
KPLB0301800	Silver	5
KPLB0301A00	Black Soft Touch	5

Spare parts for K4.2

See page 165, or visit the website for all product information.



FASTEC ADAPTERS AND FITTINGS

K4.2 DOMESTIC WATER MANIFOLD KIT WITH FLUSH-MOUNTING MAIN SHUT-OFF VALVE



Fastec adapters and fittings for K4.2

Fastec Fittings

	Code	Description	Pack
	RF12210200	F13 90° F / F	10
	RF12210100	F13 90° M / F	10
	KA00F10001	Dual joint Twin F13 F / F / M	5
	KA00K00002	F13 Plug M	20
	RF12110400	F13 M L. 25 mm	10
	RF12110500	F13 M L. 50 mm	10
	RF12110600	F13 M L. 75 mm	8

Threaded fittings

	Code	Description	Pack
	KA00K00003	F13 M x R 1/2"	10
	KA00K00013	F13 M x R 3/4"	10
	RF12101000	F13 M x Rp 1/2"	10
	RF12111000	F13 M x Rp 3/4"	10

R (male) and Rp (female) threaded connections in accordance with EN 10226-1 and G threaded connections in accordance with ISO 228-1.

Fittings for PEX pipes

	Code	Pipe Ø x Thickness	Pack
	RF12100100	F13 M 16 x 1.8	10
	RF12100200	F13 M 20 x 1.5	10
	RF12100300	F13 M 25 x 2.3	5
	RF13M1210301	F13 M 12 x 1.1	10
	RF13M1610301	F13 M 16 x 1.5	10
	RF13M2010301	F13 M 20 x 1.9	10
	RF13M1210401	F13 M 12 x 1.1	10
	RF13M1610401	F13 M 16 x 1.5	10
	RF13M2010401	F13 M 20 x 1.9	10

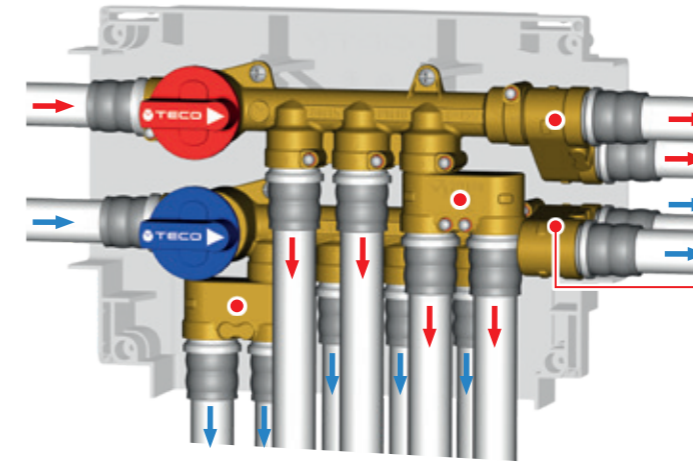
Fittings for multi-layer pipes

	Code	Pipe Ø x Thickness	Pack
	RF13M16101VA	F13 M 16 x 2.0	10
	RF13M16102VA	F13 M 16 x 2.25	10
	RF13M20101VA	F13 M 20 x 2.0	10
	RF13M20102VA	F13 M 20 x 2.5	10
	RF13M26101VA	F13 M 26 x 3.0	5
	511115MP	F13 M 16 x 2.0	5
	511116MP	F13 M 16 x 2.25	5
	511118MP	F13 M 20 x 2.0	5
	511119MP	F13 M 20 x 2.25	5
	511120MP	F13 M 20 x 2.5	5
	511121MP	F13 M 25 x 2.5	5
	511122MP	F13 M 26 x 3.0	5
	1651039	F13 M 16 x 2.0	10
	1651040	F13 M 20 x 2.0	10
	1651041	F13 M 26 x 3.0	5
	39342	F13 M 16 x 2.0	10
	39344	F13 M 20 x 2.0	10

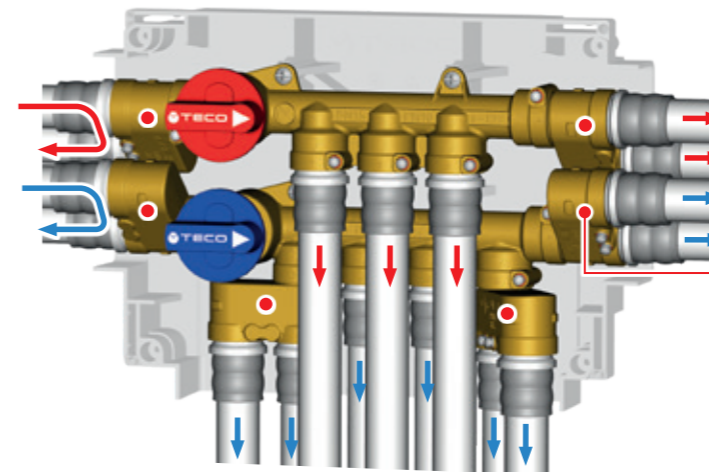
F13 Fittings with FASTEC connection available in manufacturers' catalogues

Pipe Ø 16-20	Pipe Ø 16-20-26	Pipe Ø 16-20-26	
Pipe Ø 16-20	Pipe Ø 16-20	Pipe Ø 20	Pipe Ø 16-20-25

Fastec application examples



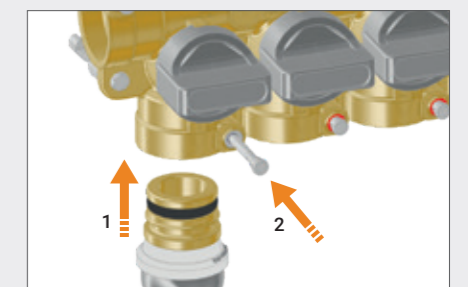
The Fastec Twin fitting (KA00F10001) allows up to 7 cold and 6 hot outlets.



The addition of Fastec Twin fittings (KA00F10001) at the inlet can be used for circuit recirculation or as a branch for another environment; if used at the outlet, a manifold with 8 cold and 5 hot outlets can be obtained.

FASTEC® THE FAST AND SECURE PLUMBING CONNECTION

Plumbing connection with pin locking (page 6).



1. Insert the fitting with the pin raised.
2. Lower the locking pin to complete the connection.

F13 DN 15 Equivalent to 1/2"