



- R4 is the safety shut-off valve.
- The bayonet connection allows the hose to be connected and disconnected safely; the valve only opens with the hose connected correctly.
- It is not possible to disconnect the hose if the valve has not been closed first with the correct movement.
- Since 1992, TECO manufactures valves with this safety technology [DIN3383].
- Equipped with the FIREBAG® safety system.

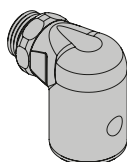


TECHNICAL SPECIFICATIONS - VALVE R4

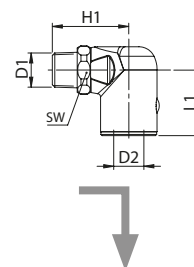
Reference standards	Pressure	Temperature	High temperature resistance	Application
R4: DIN EN 15069: 2008 - DIN 3586 R4L: DIN 33834 DIN 3586	MOP 0.5 (0,5 bar)	-40 °C +60 °C	HTB 650°C for 30' (GT 0.5 EN 1775)	For all types of gas as specified in EN 437 and DVGW G260/1 (Methane, Butane, Propane)
Material				
Body	Finish	Balls	Seats	Thermal device
Brass CW617	Polished Chrome	Brass CW617N	NBR 70	FIREBAG

VERSIONS AND CODES

DIN-EN15069 90° valve
For EN14800 hoses

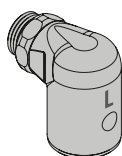


HTB 650 °C for 30' (GT 0.5 EN 1775)

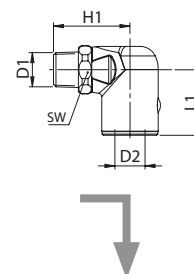


Code	DN	FIREBAG TAE	Finish	D1	D2	H1	L1	SW	Pack
R4TAS030C00	12	•	Polished chrome	R1/2"	DIN 3383-1	46	40	27	20
R4030C00	12		Polished chrome	R1/2"	DIN 3383-1	46	40	27	20

R4L DIN 3383-4 90° laboratory valve
For DIN 30664-T4 hoses



HTB 650 °C for 30' (GT 0.5 EN 1775)



Code	DN	FIREBAG TAE	Finish	D1	D2	H1	L1	SW	Pack
R421100200	12	•	Polished chrome	R1/2"	DIN 3383-1	46	40	27	5

TECO Srl
Via Sandro Pertini, 39/41 - Zona industriale Noccole, 25050 Provaglio d'Iseo (BS)

+39 030 6850510 | +39 030 6850555
info@tecosrl.it | www.tecosrl.it

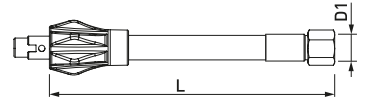
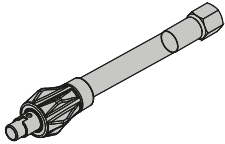


TECHNICAL SPECIFICATIONS - RTD HOSE

Reference standards	Pressure	Inlet: Bayonet quick coupling	Outlet	Internal hose	Protective sheath
DIN-EN 14800:2007	MOP 0.5 (0,5 bar)	DIN EN 15069	Threaded to EN 10226-1	Stainless steel AISI 316	Transparent PVC

Material					
Hose	Quick coupling	Nut	Mesh	Protective sheath	Seal
Stainless steel AISI 321	Handle in Polypropilen, insert Brass	Stainless steel	Stainless steel AISI 304	Fireproof PVC, yellow color	Nitril rubber EN 549

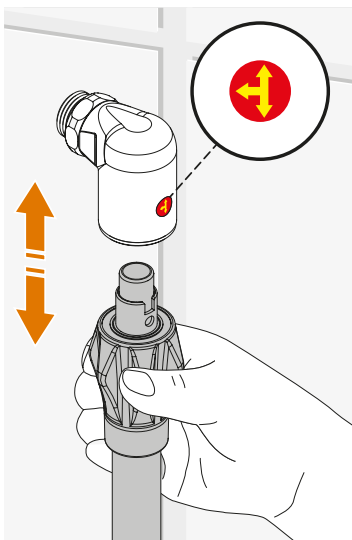
RTD hose
DIN-EN14800 hose



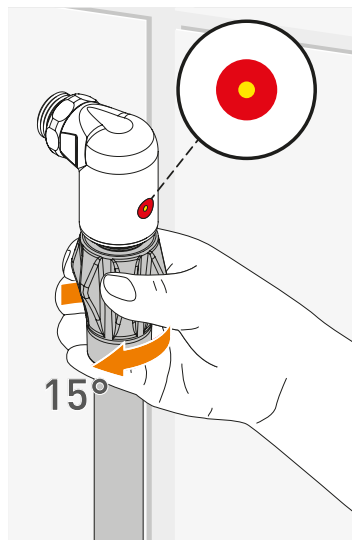
Code	D1	D2	L _{mm}	Pack
R4TD0500	Rp1/2"	DIN 3383-1	500	1
R4TD0800	Rp1/2"	DIN 3383-1	750	1
R4TD1000	Rp1/2"	DIN 3383-1	1000	1
R4TD1250	Rp1/2"	DIN 3383-1	1250	1
R4TD1500	Rp1/2"	DIN 3383-1	1500	1
R4TD2000	Rp1/2"	DIN 3383-1	2000	1

OPERATION AND TECHNOLOGIES

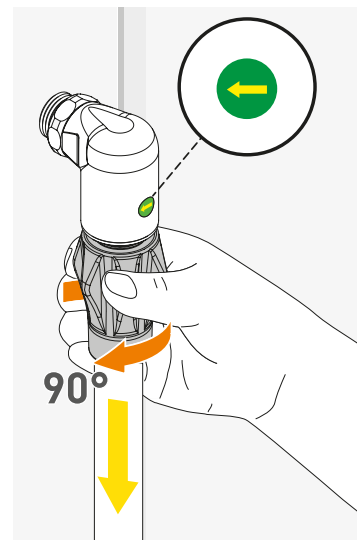
SAFE CONNECTION



Hose insertion is **QUICK** and **SAFE**. The hose can only be disconnected when the valve is closed.



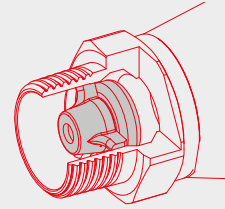
Turning the hose handle by 15° clamps it to the valve. In this position, the valve remains closed.



Turning the hose handle further opens the gas flow. The hose cannot be disconnected with the valve open.

FIREBAG® - TAE

The valve has a thermal FIREBAG® safety device built into the steel inlet fitting. The FIREBAG is built in accordance with the **DIN 3586** standard. It activates at a temperature of **100°C -5K** and withstands up to **650 °C for 30'** at a pressure of **0.5 bar**.



A version without FIREBAG® is also available, with HTB seal 650 °C for 30' C05 (Code R4030C00)

ITEM SPECIFICATIONS

R4: Valves for gas appliances with bayonet hose connections

EN331 DVGW certified ball shut-off valve for gas. DIN3383 quick bayonet connection, compatible with EN14800 hoses. Open/closed indicator on the body. Locking system to ensure correct hose coupling. Equipped with the FIREBAG® safety system.

