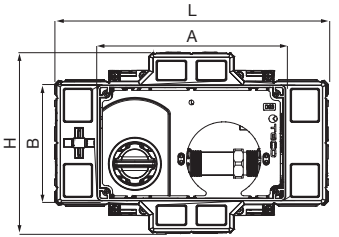
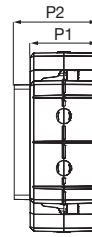
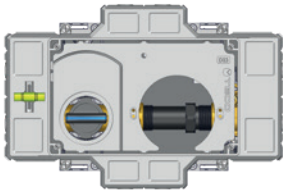




# COMPACT FLUSH-MOUNTING METERING KIT FOR DOMESTIC WATER WITH OPTIONAL REMOTE CONTROL WITHOUT METER

**D03** Compatible faceplate



Code	DN	D1	L	H	P1	P2	A	B	Faceplate	Pack
<b>F</b> K4CCDF10200	15	F13F	280	186	69	85.5	194	119	D03	1

Includes: pre-assembled box, fixing brackets, site protection cover, spirit level  
DOES NOT include: faceplate, fittings, motor, cable and meter

Material		
Body	Box	Top-Entry ball
CW617N Brass	PS	Engineered polymer

Technical specifications			
Connections	Working pressure	Temperature	Standard and certification
FASTEC	PN10 (10 bar)	0 °C + 95 °C	DIN EN 13828 - (KTW-W270) - DVGW W 570-1

## FEATURES

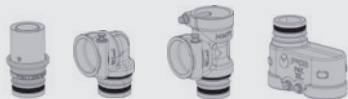
- Compact flush-mounting metering kit for domestic water with optional remote control, pre-assembled in an easily accessible sandwich box with knock-out parts.
- Valve with removable ball, brass body and Top Entry system, complies with DIN EN 13828 standard, with Soft Turn control.
- Flexible, fast and secure Fastec® connection.
- Closing and opening by operating the handle or via the optional **E104** motor.
- Faceplate can be purchased separately, available in in different finishes with magnetic closure.

## APPLICATIONS

- Domestic water systems

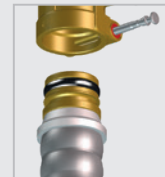
## OPERATION AND TECHNOLOGIES

**F FASTEC** STORE The shut-off devices USE FASTEC STORE FITTINGS



GO TO THE ENTIRE FASTEC® RANGE

## CONNECTION:

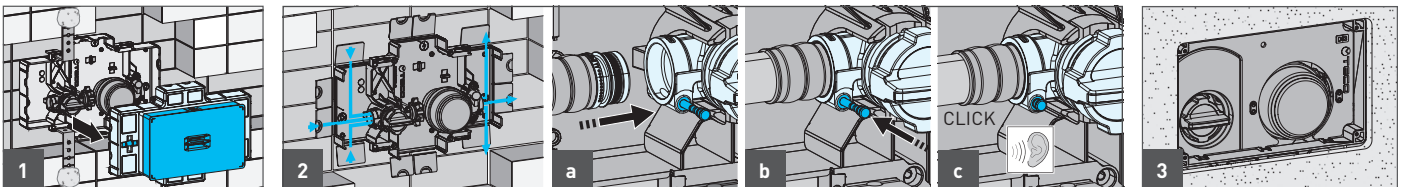


**FASTEC**

**F13 - DN15**

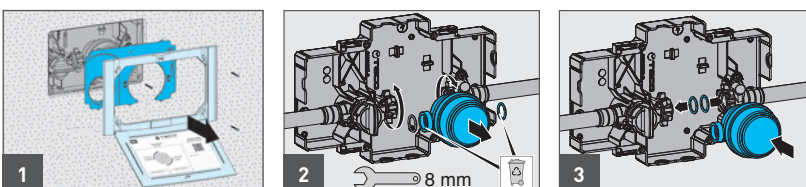
Fitting range: 16, 20, 25, 26 mm = 1/2"

## K4CC INSTALLATION

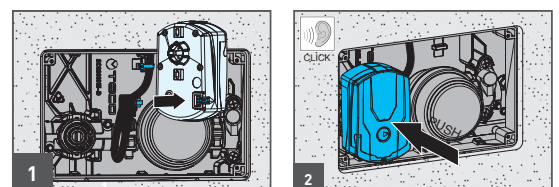


**CAUTION:** when installing the valve, insert the corrugated pipe in the box to make the valve compatible with the optional remote control.

## METER INSTALLATION/MAINTENANCE



## MOTOR INSTALLATION



## ACCESSORIES

SJ EVO meter, G 3/4" L = 80mm



Code	DN	Pack
KA00CC0005	15	1

Modular extension kit



E4 modular handle extension kit  
·23mm· modular + screws + faceplate extensions



Code	Pack
KA00K00015	1

G 3/4" fitting - L = 80mm



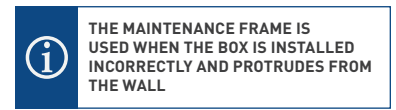
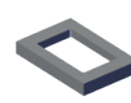
Code	DN	Pack
KA00CC0007	20	5

Link



Code	Pack
KA00CC0006	5

Maintenance frame\*



Code	Size	Pack
KRPL0005	250x160x20 mm	1

## SPARE PARTS

E4 TECO-CONTROL spare parts kit



Code	DN	Pack
KRTCE415000	15	1

E4 handle kit

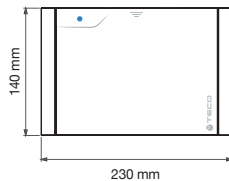
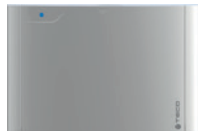


Code	Pack
KA00K40011	1

Kit of 2 spare seals for meter connection

Code	DN	Pack
KRGUCC00000	15	1

## FACEPLATES D03



Code		Finish	Pack
KPLD0301600		White	5
KPLD0301M00		Polished chrome	1
KPLD0301800		Silver	1
KPLD0301A00		Black	1

## COMMUNICATION MODULES

EVO 868 MHz LoRaWAN Radio module



Code	Pack
KA00CC0001	1

Radio EVO 868 MHz wireless M-Bus module



Code	Pack
KA00CC0002	1

M-Bus EVO module



Codice	Conf.
KA00CC0003	1

Pulse EVO module



Code	Pack
KA00CC0004	1

## SPECIFICATION TEXT

**K4CC without meter: Compact flush-mounting metering kit for domestic water with optional remote control**

Compact flush-mounting metering kit for domestic water with optional remote control, pre-assembled in an easily accessible sandwich box with knock-out parts. Shut-off valve with Top Entry removable ball and full flow that complies with the DIN 13828 standard.

Engineered polymer ball and Soft Turn anti-jamming seals. Fixing brackets, spirit level and site protection cover included.

Closing and opening by operating the handle. Operating pin compatible with mounting the ON-OFF electric motor with auxiliary microswitch in the version with open signal or in the version with safety feedback when the valve is closed. With stub pipe (Length = 80 mm). The fastening ring nuts for the meter connections are of a specific design to allow maintenance with a common 8mm spanner. Equipped with dedicated DN20-3/4" seals for integration of a meter.

TECO Srl  
Via Sandro Pertini, 39/41 - Zona industriale Noccole, 25050 Provaglio d'Iseo (BS)

+39 030 6850510 | +39 030 6850555  
info@tecosrl.it | www.tecosrl.it

