



- T4 is a shut-off valve
- Full flow, in accordance with the EN 806-2 standard
- TOP-ENTRY® removable ball and seals
- Single-piece body
- Chrome plated finish



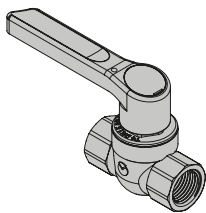
Material		
Body	Ball	Control
Brass CW618	CW617 chrome plated brass	AL EN-AB44100 aluminium

TECHNICAL SPECIFICATIONS

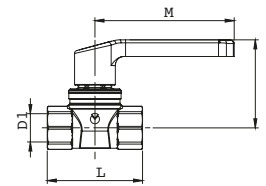
Connections	Reference standards	Working pressure	Temperature	Application
Threaded F.	DIN EN 13828 (PN10) DVGW W 570-1	PN40 (40 bar)	0°C +150 °C	Water, heating, pneumatic, petrochemical and oil distribution systems. Suitable for non-aggressive fluids and vacuum.

VERSIONS AND CODES

Valve – straight threaded f/f version

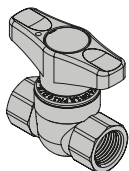


Control lever

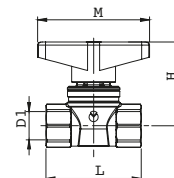


Code	DN	D1 EN-10226-1	L	H	M	SW	Pack
T4040300	15	Rp1/2"	63	58	92	27	50
T4040400	20	Rp3/4"	73	61	92	32	40
T4040500	25	Rp1"	83	71	124	41	20
T4040600	32	Rp1"1/4	100	76	124	50	15
T4040700	40	Rp1"1/2	110	82	147	55	10
T4040800	50	Rp2"	131	88	147	70	5

Valve – straight threaded f/f version



Control handle



Code	DN	D1 EN-10226-1	L	H	M	SW	Pack
T4041300	15	Rp1/2"	63	55	74	27	50
T4041400	20	Rp3/4"	73	58	74	32	40

FUNCTION AND INTEGRATED TECHNOLOGIES

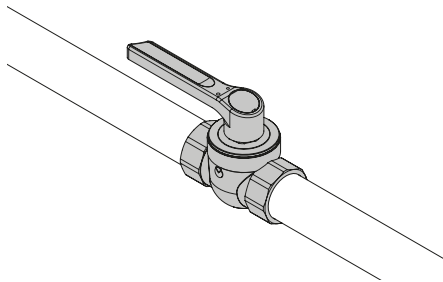
TECO CONTROL maintenance

⚠

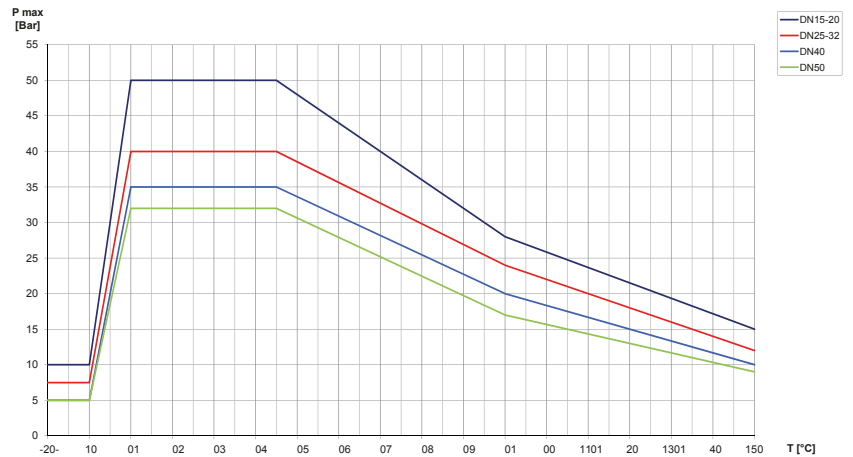
DN15 Max.30Nm
 DN20 Max.30Nm
 DN25 Max.30Nm
 DN32 Max.40Nm
 DN40 Max.40Nm
 DN50 Max.40Nm

INSTALLATIONS AND APPLICATIONS

Water, heating, pneumatic, hydraulic and petrochemical distribution systems.
T4 is suitable for non-aggressive fluids and vacuum systems.

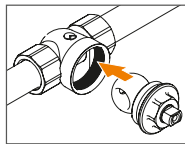


Temperature / Pressure



SPARE PARTS

Teco control



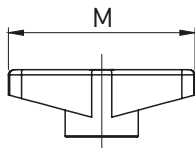
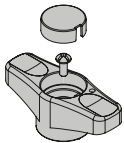
Code	DN	Pack
KRLE040100	15	20
KRLE040200	20	15
KRLE040300	25	10
KRLE040400	32	5
KRLE040500	40	5
KRLE040600	50	2

Seal kit



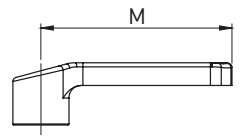
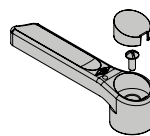
Code	DN	Pack
5004000130	15	20
5004000140	20	15
5004000150	25	10
5004000160	32	10
5004000170	40	10
5004000180	50	10

Handle



Code	DN	M	Pack
KRMN041100	15-20	74	20
KRMN040300	25	94	10

Lever



Code	DN	M	Pack
KRLE041100	15-20	92	20
KRLE041200	25-32	124	20
KRLE041300	40-50	147	10

ITEM SPECIFICATIONS

T4: Shut-off valve

Top Entry shut-off valve with removable ball and full flow with single-piece body. Complies with the EN 13828 standard. Chrome plated brass ball with anti-stagnation hole. Accessories with painted aluminium lever or handle. 90 degree control.

Temperature range 0-150 °C (peak).

Maximum pressure PN 40 bar.

