

K2.0 - K2.1

FLUSH-MOUNTING GAS VALVE

Data sheet
MCTW026.00 - 05/2019



- With flush-mounting and accessible Sandwich box
- Connections with sheath that is gas-tight with respect to the wall and provide ventilation to the outside
- TECO Tapered Seal connection: heat resistant in the event of fire (HTB)
- The faceplates allow full access to the shut-off valves
- The faceplate Design is suitable for exposed installation



Material					
Body	Sandwich Box	Balls	Seats	Handle	Faceplates
Brass CW617	ABS	Brass CW617	NBR	Polyamide	ABS

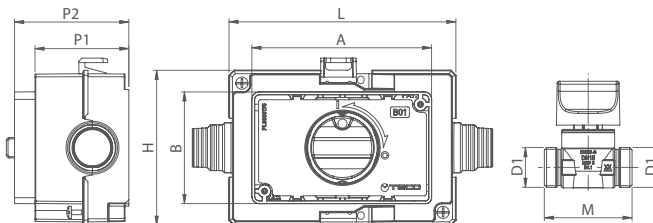
TECHNICAL SPECIFICATIONS

Connections	Working pressure	Temperature	High temperature resistance	Standard and certification
TAPERED SEAL and ISO 228 M thread	MOP 5	- 20 °C + 60 °C	(B01) 0,1 bar 650°C for 30min	DIN EN 331 DVGW

VERSIONS AND CODES

Flush-mounting straight gas shut-off cock*

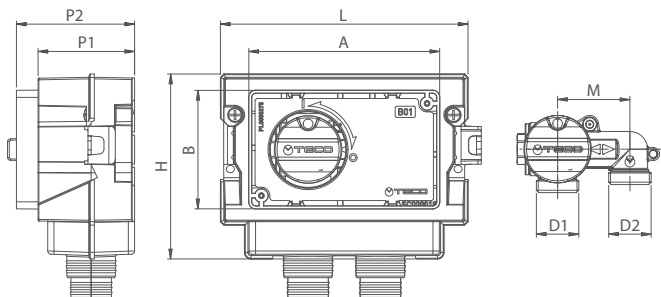
B01 Compatible faceplate



Code	DN	D1	M	L	H	P1	P2	A	B	Faceplates	Pack
K200BC10100	15	TC3/4"	58	150	102	62	75	119	74	B01	10
K200B110100	15	Rp1/2"	63	150	102	62	75	119	74	B01	10

Flush-mounting "u" gas shut-off cock*

B01 Compatible faceplate



Code	DN	D1	D2	M	L	H	P1	P2	A	B	Faceplates	Pack
K201BC10100	15	TC3/4"	TC3/4"	45	154	115	60	73	119	74	B01	10

* Includes: fixing bracket, site protection cover. Does not include: faceplate and fittings.

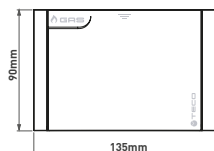
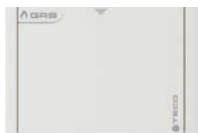
TECO Srl
Via Sandro Pertini, 39/41 - Zona industriale Noccole, 25050 Provaglio d'Iseo (BS)

+39 030 6850510 | +39 030 6850555
info@tecosrl.it | www.tecosrl.it



FACEPLATES

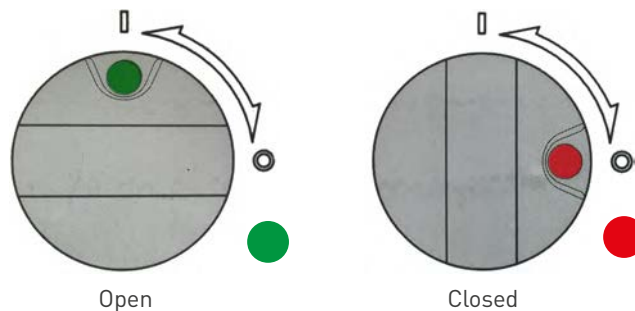
B01



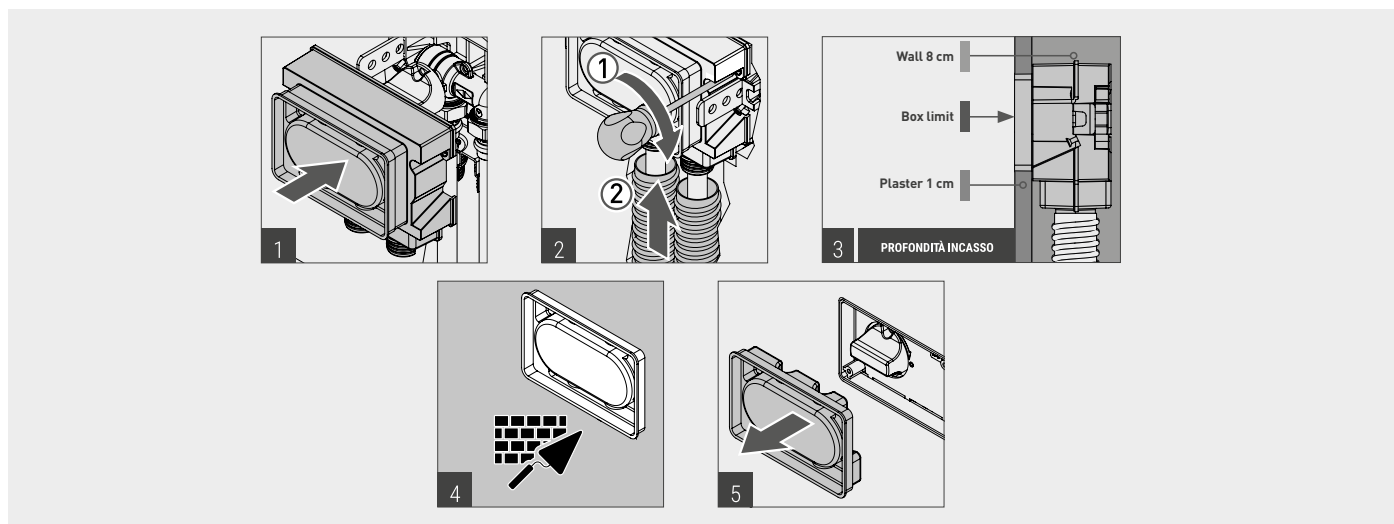
Code	Finish	Pack
KPLB0101600	White	10
KPLB0101M00	Polished chrome	5
KPLB0101800	Silver	5
KPLB0101A00	Black Soft Touch	5
KPLB0101700	Copper	5

OPERATION AND TECHNOLOGIES

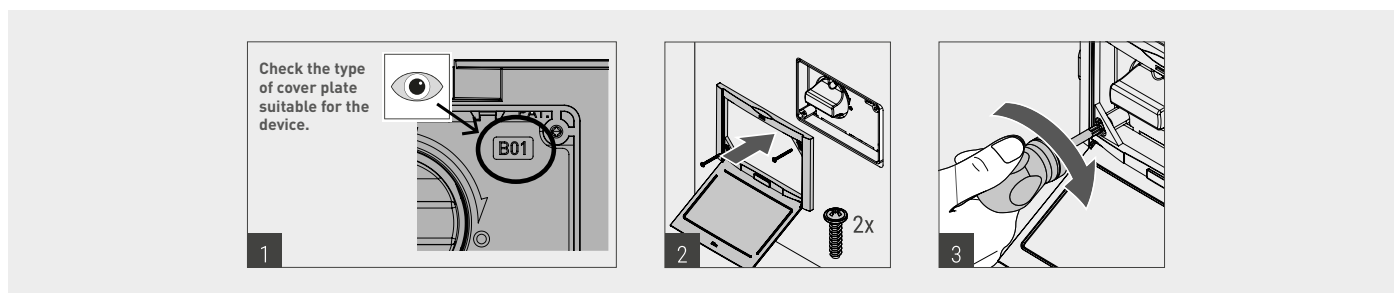
K2.0 and K2.1 valves have a plastic handle for opening and closing. The open/close position is indicated by the color showed by the turning of the handle. Green means open, red means close.



MOUNTING OF THE BOX

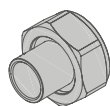


APPLICATION OF THE EXTERNAL COVERING PLATE

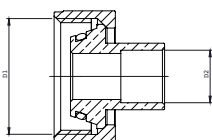


TC CONNECTION FITTINGS

Bronze soldered fittings



Fitting for soldered copper pipe connection that complies with EN 1254-5

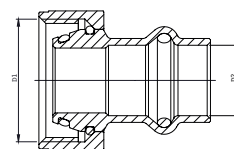


Code	D1 ISO228-1	D2	Pack
K2CS1201	TC 3/4"	ø12mm	10
K2CS1401	TC 3/4"	ø14mm	10
K2CS1501	TC 3/4"	ø15mm	10
K2CS1601	TC 3/4"	ø16mm	10
K2CS1801	TC 3/4"	ø18mm	10
K2CS2201	TC 3/4"	ø22mm	10
K0CS2202	TC 1"	ø22mm	5
K0CS2802	TC 1"	ø28mm	5

UNIPRESS® RG press-fit fitting

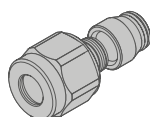


Fitting for press-fit copper pipe connection that complies with DVGW G5614 and UNI 11065.

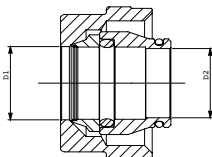


Code	D1 ISO228-1	D2	Pack
K2CP1501	TC 3/4"	ø15mm	10
K2CP1801	TC 3/4"	ø18mm	10
K2CP2201	TC 3/4"	ø22mm	10
K0CP2202	1"	ø22mm	5
K0CP2802	1"	ø28mm	5

Compression fitting

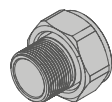


Compression fitting for copper pipe connection that complies with EN 1254-2

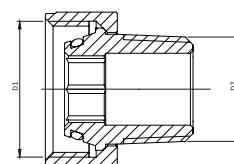


Code	D1 ISO228-1	D2	Pack
K0CR1401	TC 3/4"	ø14mm	10
K0CR1601	TC 3/4"	ø16mm	10
K0CR1801	TC 3/4"	ø18mm	10

Threaded fitting



Fitting for threaded connection that complies with EN 10226-1.



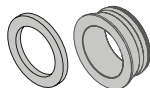
Code	D1 ISO228-1	D2 EN 1254-5	Pack
K0CF1201	TC 3/4"	1/2"	10
K0CF3401	TC 1"	3/4"	5



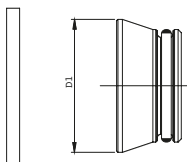
For multi-layer composite systems, the UNI 11344 standard permits the use of fittings provided by the pipe-fitting system manufacturer. Therefore, there are two possible solutions.

- TP** flat seal: Adapter to convert a tapered seal to a flat seal with gasket. Compatible with all fittings with an ISO228 swivel nut.
- F** threaded fitting: Threaded fitting + female press-fit fitting for multi-layer composite pipes.

Adapter for flat seal fittings



Adapter for connecting to all types of fittings with a FLAT SEAL with nut and gasket



Code	D1 ISO228-1	Pack
AP004001	TC 3/4"	10
AP005001	TC 1"	5

TECO Srl

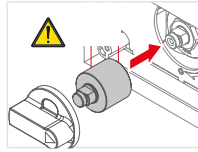
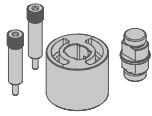
Via Sandro Pertini, 39/41 - Zona industriale Noccole, 25050 Provaglio d'Iseo (BS)

+39 030 6850510 | +39 030 6850555
info@tecosrl.it | www.tecosrl.it



ACCESSORIES

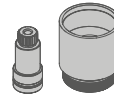
Modular extension kit 23mm



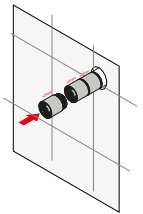
i SEVERAL EXTENSION KITS CAN BE APPLIED TO THE SAME VALVE

Code	Pack
KPR0001	1

Modular extension for 164K version 25mm

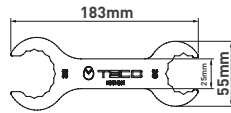
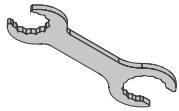


SEVERAL EXTENSION KITS CAN BE APPLIED TO THE SAME VALVE



Code	L (mm)	Pack
I4095000	23	20

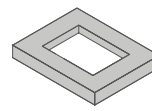
Installation spanner



i AIDS INSTALLATION AND MAINTENANCE OF K2 PRODUCTS.

Code		Pack
K0CH001	SW 30 - SW 38 spanner	1

Maintenance frame



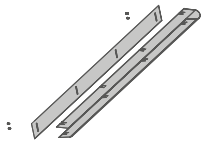
Dimensions

- 150x100x20 mm **B01**
- 215x160x20 mm **C01**
- 250x160x20 mm **D01**

i THE MAINTENANCE FRAME IS USED WHEN THE BOX IS INSTALLED INCORRECTLY AND PROTRUDES FROM THE WALL.

Code		Pack
KRPL0004	B01 COMPATIBLE	1
KRPL0002	B01 COMPATIBLE	1
KRPL0005	B01 COMPATIBLE	1

Modular ducting for laying pipes in chases outside the building



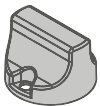
Serviceable metal ducting for laying pipes in chases outside the building. + galvanized sheet metal duct + cover complete with screws

Dimensions:
H750 x L50 mm x P70mm

Code	Pack
KA00K00001	10

SPARE PARTS

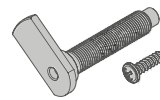
Handle



A01 *K2.0 SPARE PARTS (2009 -2017 PRODUCTION)

Code	Pack
K7MN0001	1
K2MN0001*	1

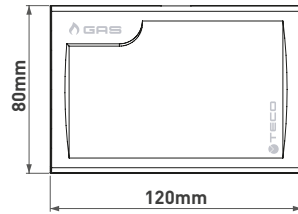
Faceplate adjustment kit **C01**



Adjustment kit (20mm) pin + screws + o-ring (x2)

Code	Pack
KRPL0003	1

A01 K2.0 faceplates



FACEPLATES COMPATIBLE WITH VALVES (2009 - 2017 PRODUCTION)
COMPATIBLE VALVE CODES: K213KC0100 - K213KF0100

Code	Finish	Pack
K2PL0001	White	1
K2PL0002	Polished chrome	1
K2PL0003	Silver	1
K2PL0004	Black	1

ITEM SPECIFICATIONS

K2.0 - K2.1: Flush-mounting gas valve

Ball valve that complies with the EN 331 standard, with the inlet and outlet at the side (K2.0) or at the bottom (K2.1), 3/4" tapered seal connections that comply with DIN 3439, complete with accessible sandwich box that is gas-tight and ventilated to the environment, and gas-tight sheath connections Brass body. Brackets and protection covers included. Opens and closes by operating the handle, manually openable faceplate available in five colours.

Minimum temperature -20°C.

Maximum temperature 60°C.

MOP 5.

The connections are certified and guaranteed to seal at high temperature HTB 650°C x 30'.

K2.0



K2.1

