



G5 valves are specifically for dual-pipe gas meters that are EN331 DVGW certified.

The valves are 90° and are available with GST® and FIREBAG® safety devices. The size range from DN20 to DN50 makes it suitable for use in both residential and industrial gas systems. The lever has a slot for padlocking



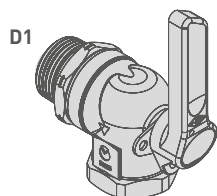
Material						
Body	Finish	Balls	Seats	Lever	FIREBAG	GST®
Brass CW617	San Blasted Brass	Brass CW614	PTFE	Aluminium Yellow painted and lock base	Thermo cartridge inlet side	Excess flow cartridge inlet side (only DN25)

TECHNICAL SPECIFICATIONS

	Reference standards	Working pressure	Working temperature	High temperature resistance	Application
G5	DIN EN 331	MOP 5 (5 bar)	-20 °C +60 °C	HTB 650°C for 30' (DIN EN331 C1)	For all types of gas as specified in EN 437 and DVGW G260/1 (Methane, Butane, Propane)
G5T FIREBAG	DIN EN 331 DIN 3586	MOP 5 (5 bar)		HTB 650°C for 30' (DIN EN331 C5)	
G5G GST®	DIN EN 331 DVGW VP305-1	15 - 100 mbar		HTB 650°C for 30' (DIN EN331 C1)	

VERSIONS AND CODES

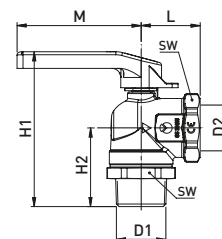
G5 90° valve – version for dual-pipe gas meters



D2

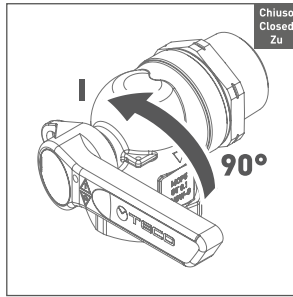
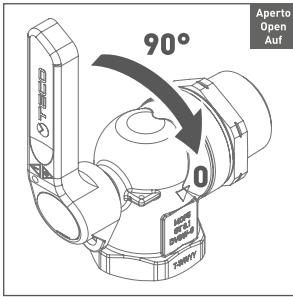
Padlockable lever

- HTB 650° for 30' (DIN EN331 C1)
- HTB 650° for 30' (DIN EN331 C5) - TAE



Code	DN	FIREBAG TAE	GST® GS m³/h	D1	D2	L	H1	H2	M	SW	Pack
G51219L100	20			R3/4"	Rp3/4"	34	84	43	82	32	10
G51319L100	25			R1"	Rp1"	38	102	52	82	41	10
G51419L100	32			R1"1/4	Rp1"1/4	46	135	59	124	50	5
G51519L100	40			R1"1/2	Rp1"1/2	51	150	65	124	55	3
G51619L100	50			R2"	Rp2"	61	158	74	124	70	1
G52219L100	20	•		R3/4"	Rp3/4"	343	84	43	82	32	10
G52319L100	25	•		R1"	Rp1"	38	102	52	82	41	10
G52419L100	32	•		R1"1/4	Rp1"1/4	46	135	59	124	50	5
G53319L200	25		V _{GAS} =2.5	R1"	Rp1"	38	102	52	82	41	10
G53319L300	25		V _{GAS} =4.0	R1"	Rp1"	38	102	52	82	41	10
G53319L400	25		V _{GAS} =6.0	R1"	Rp1"	38	102	52	82	41	10

OPERATION AND TECHNOLOGIES



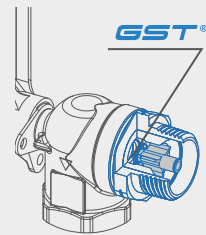
PADLOCKABLE LEVER

All of the valves can be padlocked in the closed position.

GST®

G5 valves are available with the GST excess flow safety device built into the steel inlet fitting. The valve sizes remain unchanged.

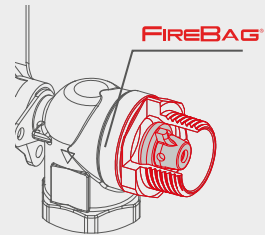
The GST excess flow safety device is built in accordance with the DVGW VP 305-1 standard and is built into the DN25 valve; it has a flow rate V_{gas} 2.5 - 4.0 - 6.0 m³/h at a maximum pressure of 100 mbar.



FIREBAG® - TAE

G5 valves are available with the FIREBAG® thermal safety device built into the steel inlet fitting. The valve sizes remain unchanged.

FIREBAG® complies with the requirements of the DIN 3586 standard and is built into the DN20-25-32 valves. The thermal device activates at a temperature of 100°C - 5K and can withstand temperatures of up to 650°C for 30 minutes at a pressure of 5 bar.



G5 valves are supplied with a single built-in safety device.

ITEM SPECIFICATIONS

G5: Meter valves for 90° dual-pipe gas meters

G5 valves are specifically for dual-pipe gas meters that comply with EN331 and are DVGW certified. Available with GST® and FIREBAG® safety devices on the inlet.

The lever has a slot for padlocking. Range from DN20 to DN50.

For all types of gas in accordance with EN 437 and DWG G260/1 (Methane, Propane and Butane).

MOP 5.

Working temperature -20°C + 60°C.

high-temperature resistance HTB 650°C for 30' (EN 1775).

