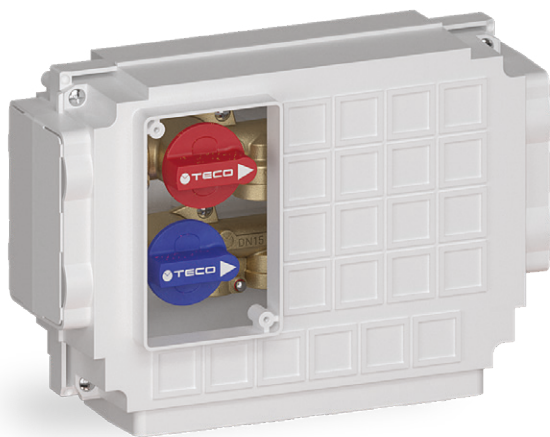


# DOMESTIC WATER MANIFOLD KIT WITH FLUSH-MOUNTING MAIN SHUT-OFF VALVE

Technical data sheet  
MCTW020.00 - 09/2024



**B03** Compatible faceplate



## FEATURES

- **Compact flush-mounting domestic water manifold kit with general shut-off function.**
- DN15 "Top Entry" valve with full flow, removable ball and "Soft Turn" anti-jamming technology, even after long periods of inactivity without the need for periodic activation.
- **Pre-assembled in a serviceable sandwich box** with knock-outs on the sides.
- **Design faceplate**, small with **magnetic closure** and a range of available finishes.
- **FASTEC®** fast system connections.
- Inlets and outlets expandable by using FASTEC® TWIN fittings.

## Technical Specifications

Connections	Working pressure	Temperature	Standard and certification
FASTEC	PN10 (10 bar)	+5 °C ÷ +65 °C (90 °C x60') MAX 95 °C	DIN EN 13828 W570-1 KTW-BWGL

## APPLICATIONS

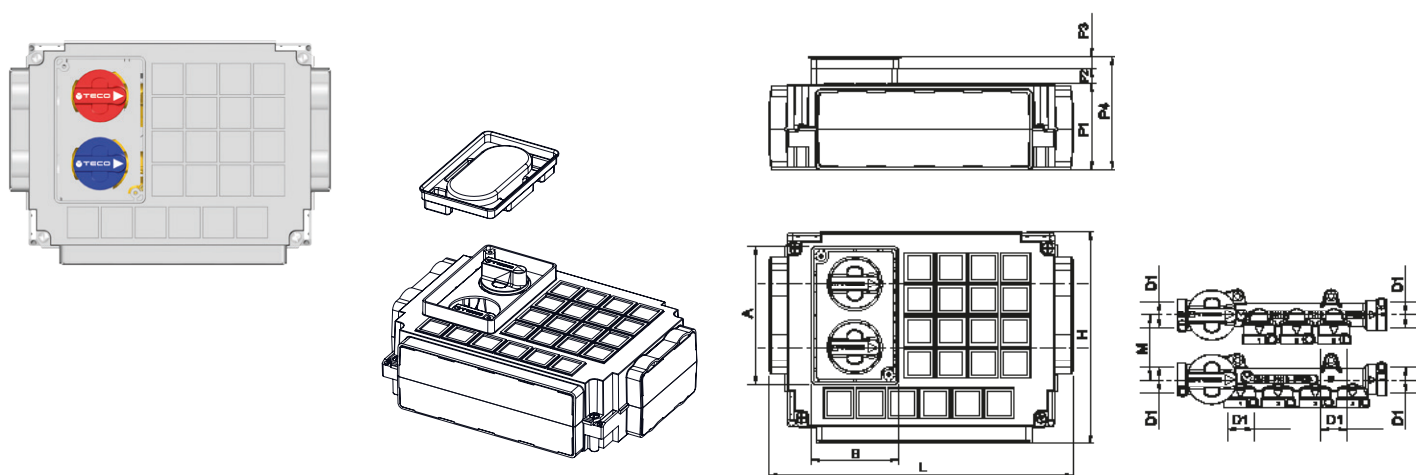
- For hot and cold drinking water.
- For cooling and heating water with or without antifreeze.
- Suitable for installation in masonry and plasterboard constructions (**minimum thickness 100 mm**).



## Material

Body	Ball	Ball seats	O-Ring	Handle	Box	Construction site protection cover
Hot Forged Brass CW617N	Technopolymer	VMQ	EPDM Perox 70 ShA	PA66 +30 GF (Polyamide) Colour BLUE and RED	PS (Plastic)	PS (Plastic)

## K4.2 domestic water manifold kit with flush-mounting main shut-off valve

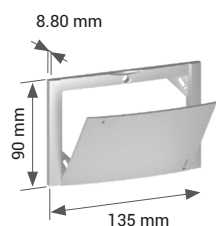


	Code	DN	D1	M	L	H	P1	P2	P3	P4	A	B	Faceplate
<b>F</b>	K402BF10100	15	F13F	55	261	182	73.5	12	10.5	96	119	74	B03

**Includes:** 2 Manifolds with general shut-off on the hot and cold inlets  
Fixing brackets, construction site cover  
Box 260 x 180 x 85 mm

**Does not include:** cover faceplate **B03**  
FASTEC® fittings

### FACEPLATES **B03**



**Includes:**

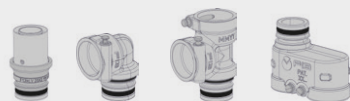
- Fixing screws

Code	Finish	Pack
KPLB0301600	White	10
KPLB0301M00	Polished chrome	5
KPLB0301800	Silver	5
KPLB0301A00	Black Soft Touch	5

### OPERATION AND TECHNOLOGIES



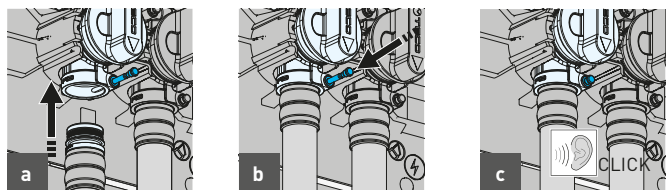
DISCOVER THE ENTIRE FASTEC RANGE



### CONNECTION:

COMPARATIVE TABLE			
CONNECTIONS FASTEC	TRADITIONAL CONNECTIONS		
	DN	INCHES	MULTILAYER PIPE / PEX
<b>F13</b>	15	1/2"	Ø 12 - 16 - 20 - 25 - 26

### FASTEC® CONNECTION



- Raise the pin and insert the fitting in the coupling seat.
- Lower the locking pin in order to complete the connection.
- The correct connection is confirmed by a **CLICK**. Once the pin is lowered, the FASTEC® connection ensures long-term sealing and does not require maintenance.

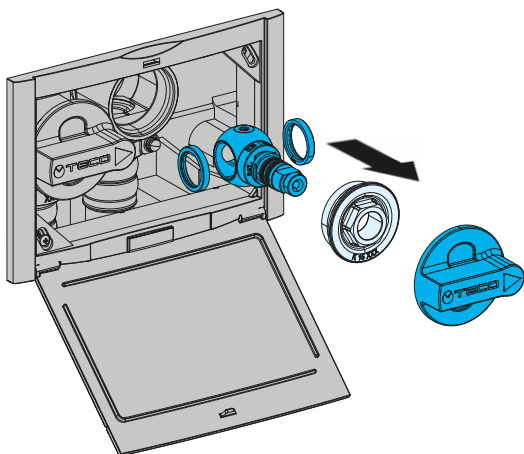
TECO Srl  
Via Sandro Pertini, 39/41 - Noccole Area Industriale, 25050 Provaglio d'Iseo (BS)

+39 030 6850510 | +39 030 6850555  
info@tecosl.it | [www.tecosl.it](http://www.tecosl.it)



## ACCESSORIES

### VALVE MAINTENANCE TECO CONTROL K4

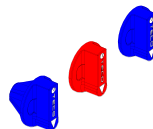


#### Control handle extension (23 mm)



Code	Pack
KPR0001	1

#### Replacement handle kit



Code	Pack
KA00K40001	1

#### Maintenance faceplate kit (135 x 90 x 15 mm)



Code	Compatibility	Pack
KRPL0004	Faceplate B03	1

### K4 TECO CONTROL Kit

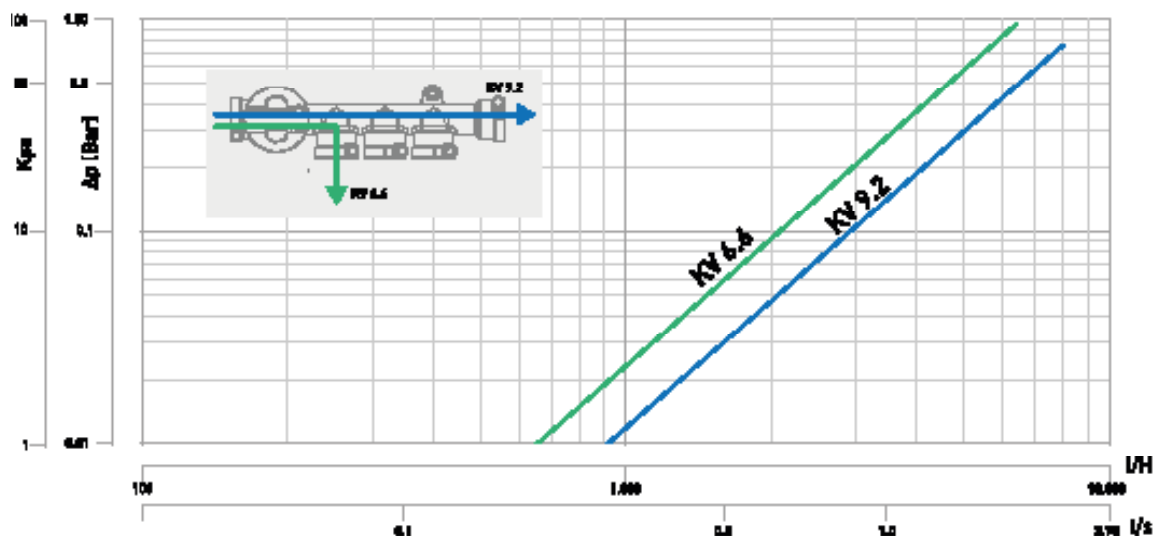


Code	DN	Pack
KR00K00001	15	5

#### Faceplate screw extension kit



Code	Pack
KR00K00004	10



## SPECIFICATION TEXT

### K4.2: Single shut-off manifold 5+4 outputs

Compact pre-assembled sanitary distribution manifold kit 5+4 outlets, brass body with extractable "Top Entry" hot/cold interceptions compliant with the standard DIN EN 13828 with "Soft Turn" seals, PPSU balls with full bore. Quick coupling connections with FASTEC F13 technology, safety locking pin. Inspectable sandwich box in shockproof PS, depth adjustment brackets and construction site protection cover. Closure and opening through 90° rotation of the handles, manually openable faceplate available in four colors. Maximum temperature +95 °C. Maximum operating temperature +65 °C. Maximum pressure PN10 (10 bar).