

SINGLE SHUT-OFF KIT
WITH "U" INLET AND OUTLET

B03 Compatible faceplate



FEATURES

- Compact flush-mounting shut-off valve kit.
- DN15-DN20 "Top Entry" valve with removable ball and "Soft Turn" anti-jamming technology to ensure jam-free operation even after long periods of inactivity without the need for periodic activation.
- Pre-assembled in a serviceable **sandwich box** with knock-outs on all four sides.
- **Design faceplate with magnetic closure**, available in a range of finishes.
- Threaded or **FASTEC®** fast system connection versions.

Technical Specifications

Connections	Working pressure	Temperature	Standard and certification
FASTEC Eurocone	PN10 (10 bar)	+5 °C ÷ +65 °C (90 °C x60') MAX 95 °C	DIN EN 13828 W570-1 KTW-BWGL

APPLICATIONS

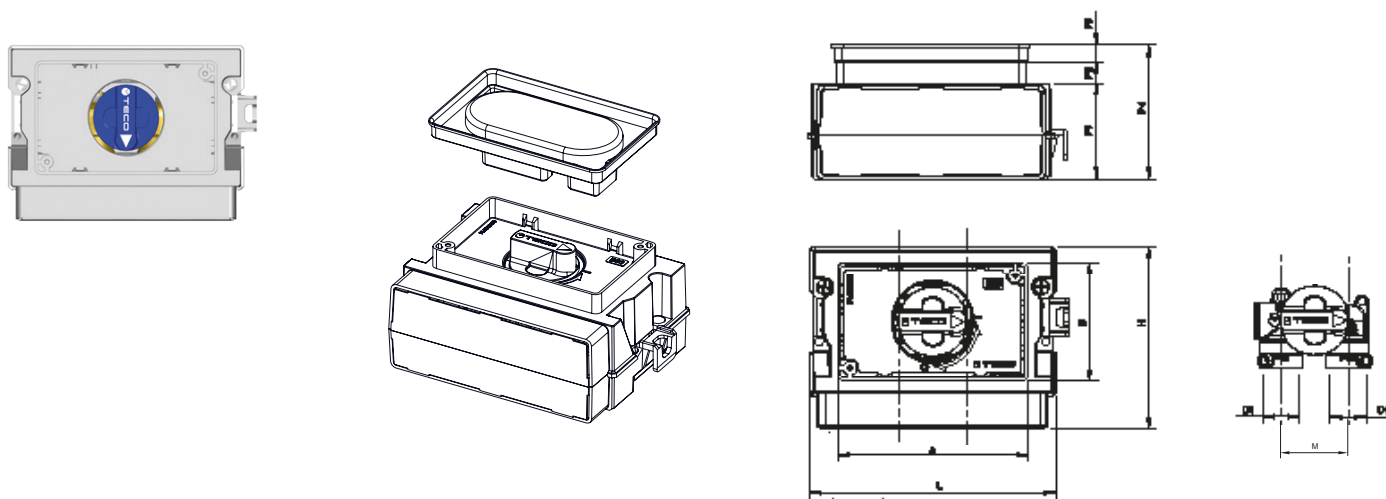
- For hot and cold drinking water.
- For cooling and heating water with or without antifreeze.
- Suitable for installation in masonry and plasterboard constructions (**minimum thickness 85 mm for DN15 version and 100 mm for DN20 version**).



Material

Body	Ball	Ball seats	O-Ring	Handle	Box	Construction site protection cover
Hot Forged Brass CW617N	Technopolymer	VMQ	EPDM Perox 70 ShA	PA66 +30 GF (Polyamide) Blue colour	PS (Plastic)	PS (Plastic)

K4.1 Single shut-off kit with "U" inlet and outlet

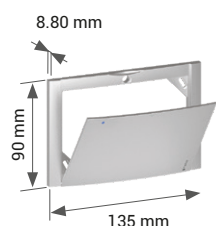


	Code	DN	D1	M	L	H	P1	P2	P3	P4	A	B	Faceplate
F	K401BF10100	15	F13F	42	154	114	60	13.5	10.5	84	119	74	B03
	K401BE10100	15	EK 3/4"	42	154	114	60	13.5	10.5	84	119	74	B03
F	K401BF30100	20	F14F	52	194	114	60	13.5	10.5	84	119	74	B03

Includes: 1 valve with removable ball, fixing bracket,
Construction site cover
Box 155 x 115 x 75 mm

Does not include: cover faceplate **B03**
FASTEC® Fittings

FACEPLATES **B03**



Includes:

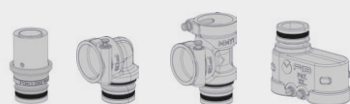
- Fixing screws

Code	Finish	Pack
KPLB0301600	White	10
KPLB0301M00	Polished chrome	5
KPLB0301800	Silver	5
KPLB0301A00	Black Soft Touch	5

OPERATION AND TECHNOLOGIES



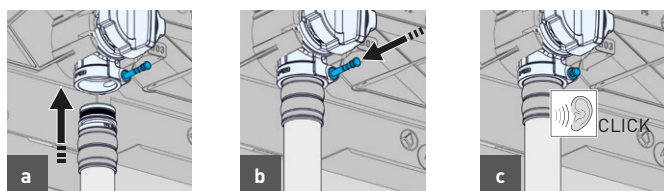
DISCOVER THE ENTIRE FASTEC RANGE



CONNECTION:

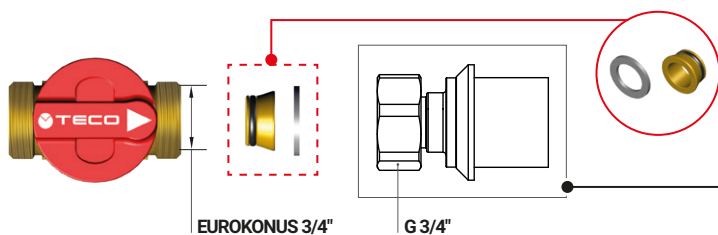
COMPARATIVE TABLE			
CONNECTIONS FASTEC	TRADITIONAL CONNECTIONS		
	DN	INCHES	MULTILAYER PIPE / PEX
F13	15	1/2"	Ø 12 - 16 - 20 - 25 - 26
F14	20	3/4"	Ø 26 - 32

FASTEC® CONNECTION



- Raise the pin and insert the fitting in the coupling seat.
- Lower the locking pin in order to complete the connection.
- The correct connection is confirmed by a **CLICK**. Once the pin is lowered, the FASTEC® connection ensures long-term sealing and does not require maintenance.

ADAPTER FOR FLAT SEAL FITTINGS FOR K4.0 AND K4.1 VALVES

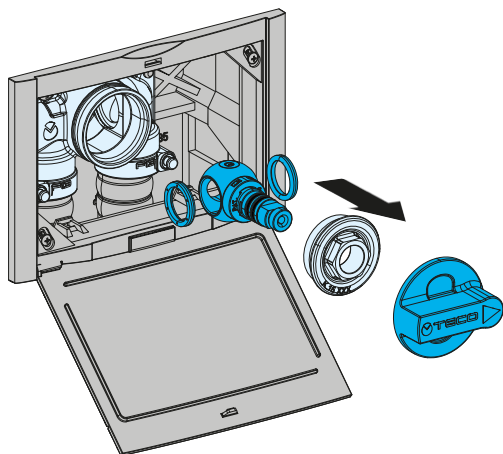


Code	Description	Pack
AP004003	Adapter for TECO flat seal fittings EK-TP	10

Fitting for multi-layer composite pipe with **EUROKONUS 3/4" SWIVEL NUT** connection, not supplied by **TECO**.

ACCESSORIES

VALVE MAINTENANCE TECO CONTROL K4

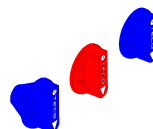


Control handle extension (23 mm)



Code	Pack
KPR0001	1

Replacement handle kit



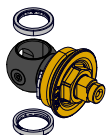
Code	Pack
KA00K40001	1

Maintenance faceplate kit (135 x 90 x 15 mm)



Code	Compatibility	Pack
KRPL0004	Faceplate B03	1

K4 TECO CONTROL Kit

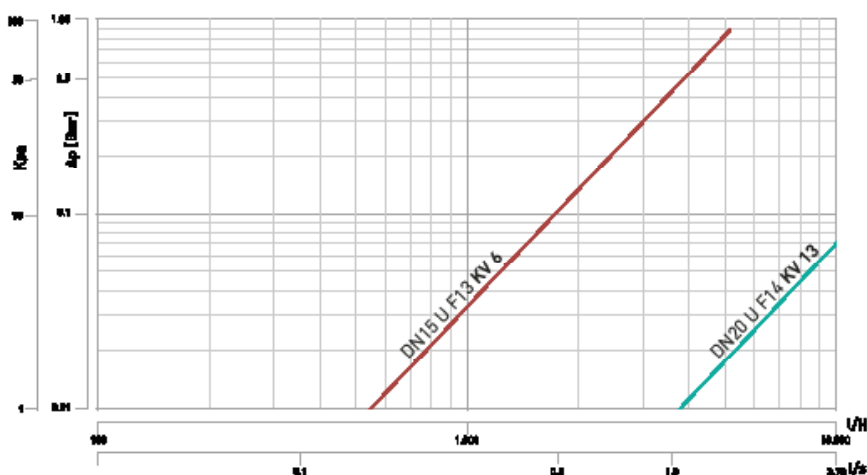


Code	DN	Pack
KR00K00001	15	5
KRTCK420000	20	5

Faceplate screw extension kit



Code	Pack
KR00K00004	10



SPECIFICATION TEXT

K4.1: Single shut-off kit with "U" inlet and outlet

"Top Entry" shut-off valve with full bore, compliant with DIN EN 13828, pre-assembled in an serviceable sandwich box with with knockouts on all four sides. Engineered polymer ball and anti-lock "Soft Turn" seals. Brackets and site protection cover included. Closing and opening by operating the handle. Manually openable faceplate available in four colours. Maximum temperature 95 °C.

TECO Srl
Via Sandro Pertini, 39/41 - Noccole Area Industriale, 25050 Provaglio d'Iseo (BS)

+39 030 6850510 | +39 030 6850555
info@tecocrsl.it | www.tecocrsl.it

