

K2
SERIES
MODULAR DISTRIBUTION AND SHUT-OFF
SYSTEM FOR CONCEALED GAS LINES



VALVES



PAGE 104

MANIFOLDS



PAGE 110

K2 SERIES VALVES AND MANIFOLDS
the TECO flush-mounting modular system

K2 is the innovative distribution and shut-off system for concealed gas lines in domestic systems.

It features compliance with strict accessibility regulations without compromising the look of the environment.

The special design of the plates not only ensures high functionality, but also stands out for its aesthetic appeal, blending harmoniously into its surroundings.

COMPACT FLUSH-MOUNTING SHUT-OFF VALVE FOR GAS LINES

K2.1 - K2.0 - K164
RK

FLUSH-MOUNTING
PRACTICAL TO INSTALL
ALWAYS ACCESSIBLE



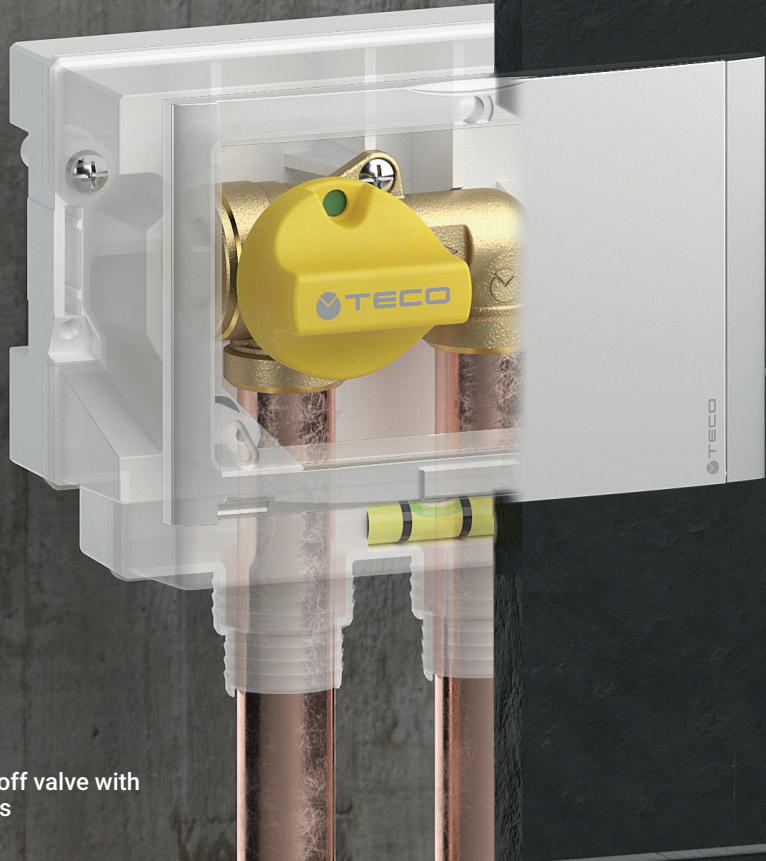
K2.0
Flush-mounting gas shut-off valve with side connections



K164
Flush-mounting gas shut-off valve with external lever



RK
Flush-mounting elbow gas fitting



K2.1
Flush-mounting gas shut-off valve with downward "U" connections

APPLICATIONS

- For all types of gas as specified in EN 437 and DVGW G260/2013 (Methane, Butane, Propane).
- Suitable for installation in masonry constructions (minimum thickness 85 mm).



Patented

TECHNICAL DATA

Temperature	-20 °C ÷ +60 °C
Pressure	MOP 5 (5 bar)
Connections	TECO TC tapered seal, EN 10226-1 R/Rp thread, ISO 228-1 G thread
High temperature resistance	HTB 0.1 bar 650°C for 30' (B0.1 for RK GT0.1 only)
Reference standards	DIN EN 331 UNI 7129-1:2015 (RK)

FEATURES

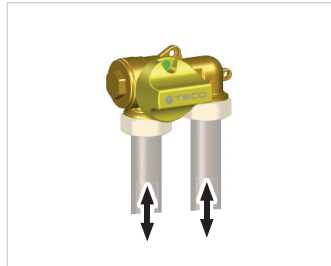
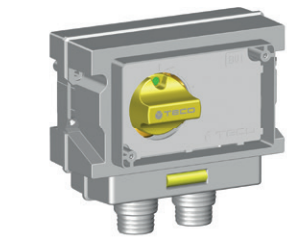
- **DIN EN 331 certified flush-mounting gas shut-off valve kit, compact design.**
- **Pre-assembled in sandwich box** that is flush-mounted and serviceable.
- Box is watertight to the wall with ventilation to the outside, in accordance with UNI 7129-2015.
- **Design faceplate with magnetic closure**, available in a range of finishes.
- "U" shape version with inlet and outlet at the bottom.
- Version with external control lever.
- **TECO **TC** Tapered Seal connection.**
- RK 90° flush-mounting fitting with box.

COMPACT FLUSH-MOUNTING SHUT-OFF VALVE FOR GAS LINES



FIND OUT MORE

K2.1 flush-mounted gas shut-off valve with downward “U” connections

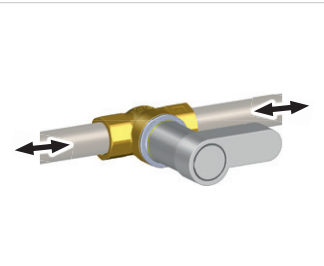


- Includes:**
- 1 valve
 - Box 155 x 115 x 75 mm
 - Fixing bracket
 - Site protection cover

- Does not include:**
- Cover flap **B01** (see below)
 - Tapered-seal fittings **TC** (page 108)

Kit code	DN	Connections	Pack
		Tapered seal	
K201BC10100	DN15	TC 3/4"	10
See page 108			

K164 flush-mounting gas shut-off valve with external lever

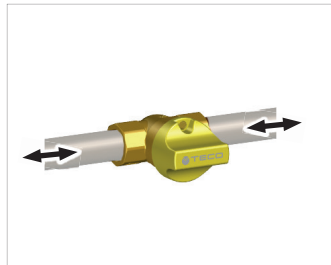
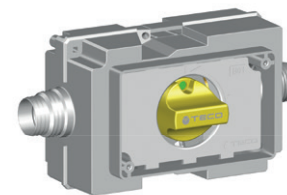


- Includes:**
- 1 valve
 - Box 140 x 85 x 60 mm
 - Fixing bracket
 - Site protection cover
 - Chrome plated faceplate and control lever

- Does not include:**
- Tapered-seal fittings **TC** (page 108)

Kit code	DN	Connections		Pack
		Tapered seal	Threaded	
K113KC0100	DN15	TC 3/4"	-	10
K113KF0100	DN15	-	Rp 1/2"	10
See page 108				

K2.0 flush-mounting gas shut-off valve with side connections

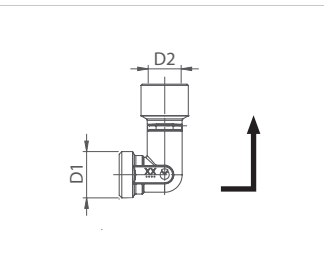


- Includes:**
- 1 valve
 - Box 150 x 105 x 75 mm
 - Fixing bracket
 - Site protection cover

- Does not include:**
- Cover flap **B01** (see below)
 - Tapered-seal fittings **TC** (page 108)

Kit code	DN	Connections		Pack
		Tapered seal	Threaded	
K200BC10100	DN15	TC 3/4"	-	10
K200B110100	DN15	-	Rp 1/2"	10
See page 108				

RK flush-mounting elbow gas fitting

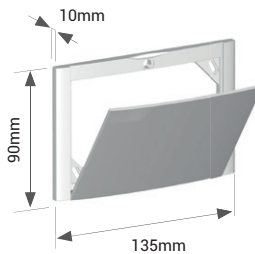


- Includes:**
- 1 90° connection
 - Box 140 x 85 x 60 mm
 - Site protection cover
 - White faceplate

- Does not include:**
- Tapered-seal fittings **TC** (page 108)

Kit code	Connections		Pack
	D1	D2	
RK13KC0100	TC 3/4"	G 1/2"	10
See page 108			

B01 Faceplate with magnetic closure for K2.1 and K2.0



- Includes:**
- Fixing screws

Code	Finish	Pack
KPLB0101600	White	10
KPLB0101800	Silver	5
KPLB0101M00	Polished chrome	5
KPLB0101A00	Black Soft Touch	5

Spare parts for K2.1 - K2.0 - K164 - RK

See page 174, or visit the website for all product information.



FITTINGS AND ACCESSORIES
FOR K2 SERIES COMPACT FLUSH-MOUNTING SHUT-OFF VALVES FOR GAS LINES



TECO TC Tapered Seal fittings

TC 3/4" Bronze soldered fittings for copper pipes



Code	Pipe Ø	Pack
K2CS1201	TC 3/4" ø12mm	10
K2CS1401	TC 3/4" ø14mm	10
K2CS1501	TC 3/4" ø15mm	10
K2CS1601	TC 3/4" ø16mm	10
K2CS1801	TC 3/4" ø18mm	10
K2CS2201	TC 3/4" ø22mm	10

Normative reference: EN 1254-5.

TC 3/4" G-Press® press-fit fittings (Unipress RG®)



Code	Pipe Ø	Pack
K2CP1501	TC 3/4" ø15mm	10
K2CP1801	TC 3/4" ø18mm	10
K2CP2201	TC 3/4" ø22mm	10

Normative reference: DVGW G 5614.
For copper pipes according to EN 1057 and DVGW GW 392; R290 (ø15x1, ø18x1, ø22x1) - R250 (ø22x1) - R220 (ø22x1).
For 1.4404 stainless steel pipes according to DIN EN 10088 and DVGW GW 541 (ø22x1.2).

TC 3/4" Compression fittings for copper pipes



Code	Pipe Ø	Pack
K0CR1401	TC 3/4" ø14mm	10
K0CR1601	TC 3/4" ø16mm	10
K0CR1801	TC 3/4" ø18mm	10

Normative reference: EN 1254-2.

TC 3/4" Threaded fittings



Code	Description	Pack
K0CF1201	TC 3/4" R 1/2"	10

Normative reference: EN 10226-1.

TC 3/4" Adapter for flat seal fittings



Code	Description	Pack
AP004001	TC 3/4"	10

TC

TAPERED SEAL CONNECTIONS

The **TECO TC** tapered seal has been designed with the aim of ensuring a 100% secure connection and high temperature seal up to 650 °C for a period of 30 minutes in the event of a fire.

THE TAPERED SEAL IS NOT COMPATIBLE WITH EUROKONUS CONNECTIONS.

HTB RESISTANCE
650 °C - 30 minutes (EN 1775)

Connection for multi-layer composite pipe fittings

Adapter for **TECO** flat seal fittings
AP004001

Fitting for multi-layer composite pipe with **G 3/4" SWIVEL NUT** connection (not supplied by **TECO**).

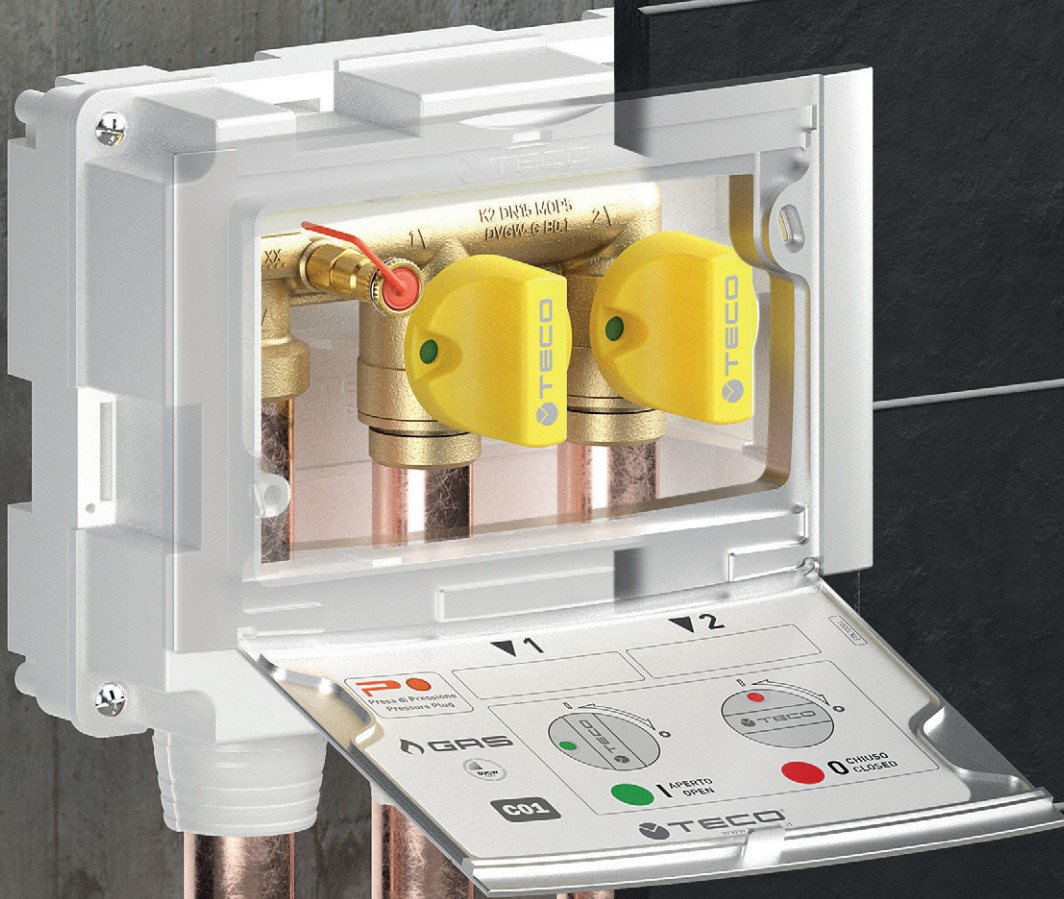
TECO TC R 1/2" threaded fitting
K0CF1201

Fitting for multi-layer composite pipe with **Rp 1/2" FEMALE THREADED** connection (not supplied by **TECO**).

COMPACT FLUSH-MOUNTING
DISTRIBUTION AND SHUT-OFF
MANIFOLDS FOR GAS LINES

K2.2 - K2.3 - K2.4
SK

FLUSH-MOUNTING
PRACTICAL TO INSTALL
ALWAYS ACCESSIBLE



K2.2
Two-port multiple shut-off gas manifold

APPLICATIONS

- Suitable for all types of gas as specified in EN 437 and DVGW G260/2013 standards (Methane, Butane, Propane).
- Suitable for installation in masonry constructions (minimum thickness 100 mm).



Patented

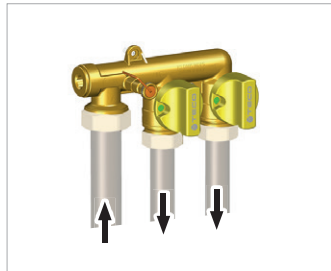
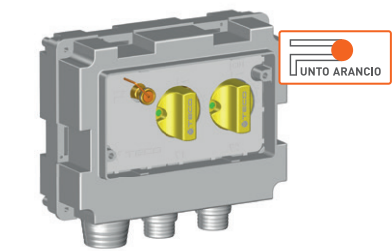
TECHNICAL DATA

Temperature	-20 °C ÷ +60 °C
Pressure	MOP 5 (5 bar)
Connections	TECO TC tapered seal
High temperature resistance	HTB 0.1 bar 650 °C for 30' (B0.1)
Reference standards	DIN EN 331

FEATURES

- DIN EN 331 certified compact flush-mounting gas distribution manifold kit.
- Pre-assembled in sandwich box that is flush-mounted and serviceable.
- Box is watertight to the wall with ventilation to the outside, in accordance with UNI 7129-2015.
- Design faceplate available in different finishes, can also be installed outdoors.
- Punto Arancio® pressure fitting.
- Heat resistance in the event of fire (HTB).
- TECO **TC**Tapered Seal connection.
- SK K2 series manifold with metal box.

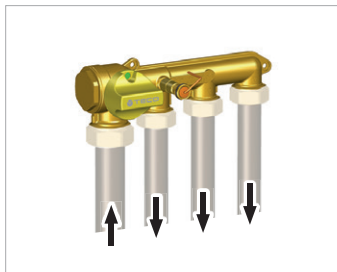
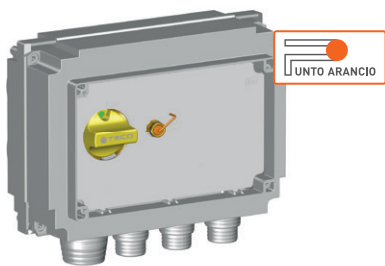
K2.2 Two-port Multiple Shut-off Gas Manifold



- Includes:**
 - 1 manifold with two outlets with shut-off valves
 - Box 205 x 155 x 85 mm
 - Fixing bracket
 - Site protection cover
 - Punto Arancio® pressure fitting
- Does not include:**
 - Cover flap **C01** (see below)
 - Tapered-seal fittings **TC** (page 114)
 - Pressure test kit (page 115)

Kit code	DN	Connections		Pack
		Inlet	Outlet	
K202CC10100	DN20	TC 1"	TC 3/4"	5
See page 114				

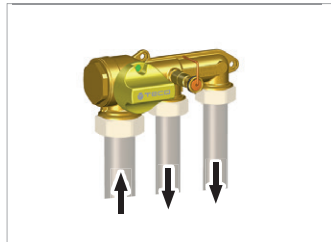
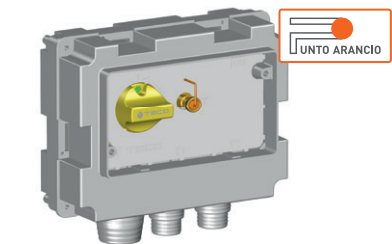
K2.4 three-port gas manifold with general shut-off



- Includes:**
 - 1 manifold with general shut-off and three outlets
 - Box 235 x 170 x 85 mm
 - Fixing bracket
 - Site protection cover
 - Punto Arancio® pressure fitting
- Does not include:**
 - Cover flap **D01** (see below)
 - Tapered-seal fittings **TC** (page 114)
 - Pressure test kit (page 115)

Kit code	DN	Connections		Pack
		Inlet	Outlet	
K204DC10100	DN20	TC 1"	TC 3/4"	5
See page 114				

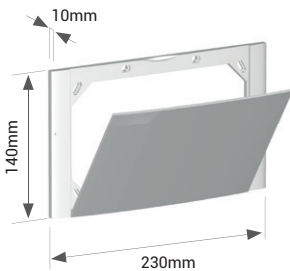
K2.3 two-port gas manifold with general shut-off



- Includes:**
 - 1 manifold with general shut-off and two outlets
 - Box 205 x 155 x 85 mm
 - Fixing bracket
 - Site protection cover
 - Punto Arancio® pressure fitting
- Does not include:**
 - Cover flap **C01** (see below)
 - Tapered-seal fittings **TC** (page 114)
 - Pressure test kit (page 115)

Kit code	DN	Connections		Pack
		Inlet	Outlet	
K203CC10100	DN20	TC 1"	TC 3/4"	5
See page 114				

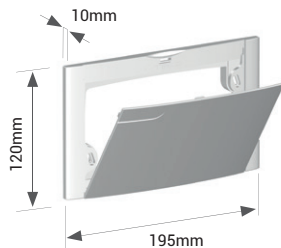
D01 Faceplate with magnetic closure for K2.4



- Includes:**
 - Fixing screws

Code	Finish	Pack
KPLD0101600	White	5
KPLD0101800	Silver	1

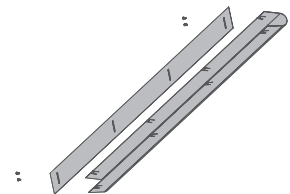
C01 Faceplate with closure for K2.2 and K2.3



- Includes:**
 - Fixing screws

Code	Finish	Pack
K7PL0001	White	5
K7PL0002	Silver	1
K7PL0003	Black Soft Touch	1

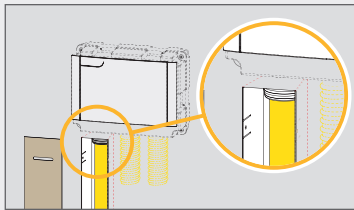
Modular ducting for laying concealed pipes outside the building



Code	Description	Pack
KA00K00001	Serviceable metal ducting (50 x 70 x h750 mm) made of galvanised sheet metal for laying concealed pipes outside the building, complete with cover and screws.	10

NOTES ON THE STANDARDS

As prescribed by the UNI 7129 standard, pipes cannot be concealed outside the building. If it is necessary to hide the pipes (e.g. when there is cladding), they can be installed in dedicated ventilated metal ducting.



Spare parts for K2.2 - K2.3 - K2.4

See page 176, or visit the website for all product information.



FITTINGS AND ACCESSORIES
FOR COMPACT FLUSH-MOUNTING DISTRIBUTION AND SHUT-OFF MANIFOLDS FOR
GAS LINES



TECO TC Tapered Seal fittings

TC 3/4" TC 1" Bronze soldered fittings

Code	Pipe Ø	Pack
K2CS1201	TC 3/4" ø12mm	10
K2CS1401	TC 3/4" ø14mm	10
K2CS1501	TC 3/4" ø15mm	10
K2CS1601	TC 3/4" ø16mm	10
K2CS1801	TC 3/4" ø18mm	10
K2CS2201	TC 3/4" ø22mm	10
K0CS2202	TC 1" ø22mm	5
K0CS2802	TC 1" ø28mm	5

Normative reference: EN 1254-5.

TC 3/4" TC 1" G-Press® press-fit fittings (Unipress RG®)



Code	Pipe Ø	Pack
K2CP1501	TC 3/4" ø15mm	10
K2CP1801	TC 3/4" ø18mm	10
K2CP2201	TC 3/4" ø22mm	10
K0CP2202	TC 1" ø22mm	5
K0CP2802	TC 1" ø28mm	5

Normative reference: DVGW G 5614.

For copper pipes according to EN 1057 and DVGW GW 392; R290 (ø15x1, ø18x1, ø22x1, ø28x1.5) - R250 (ø22x1, ø28x1, ø28x1.5) - R220 (ø22x1).

For 1.4404 stainless steel pipes according to DIN EN 10088 and DVGW GW 541 (ø22x1.2, ø28x1.2).

TC 3/4" Compression fittings for copper pipes



Code	Pipe Ø	Pack
K0CR1401	TC 3/4" ø14mm	10
K0CR1601	TC 3/4" ø16mm	10
K0CR1801	TC 3/4" ø18mm	10

Normative reference: EN 1254-2.

TC 3/4" TC 1" Threaded fittings



Code	Description	Pack
K0CF1201	TC 3/4" R 1/2"	10
K0CF3401	TC 1" R 3/4"	5

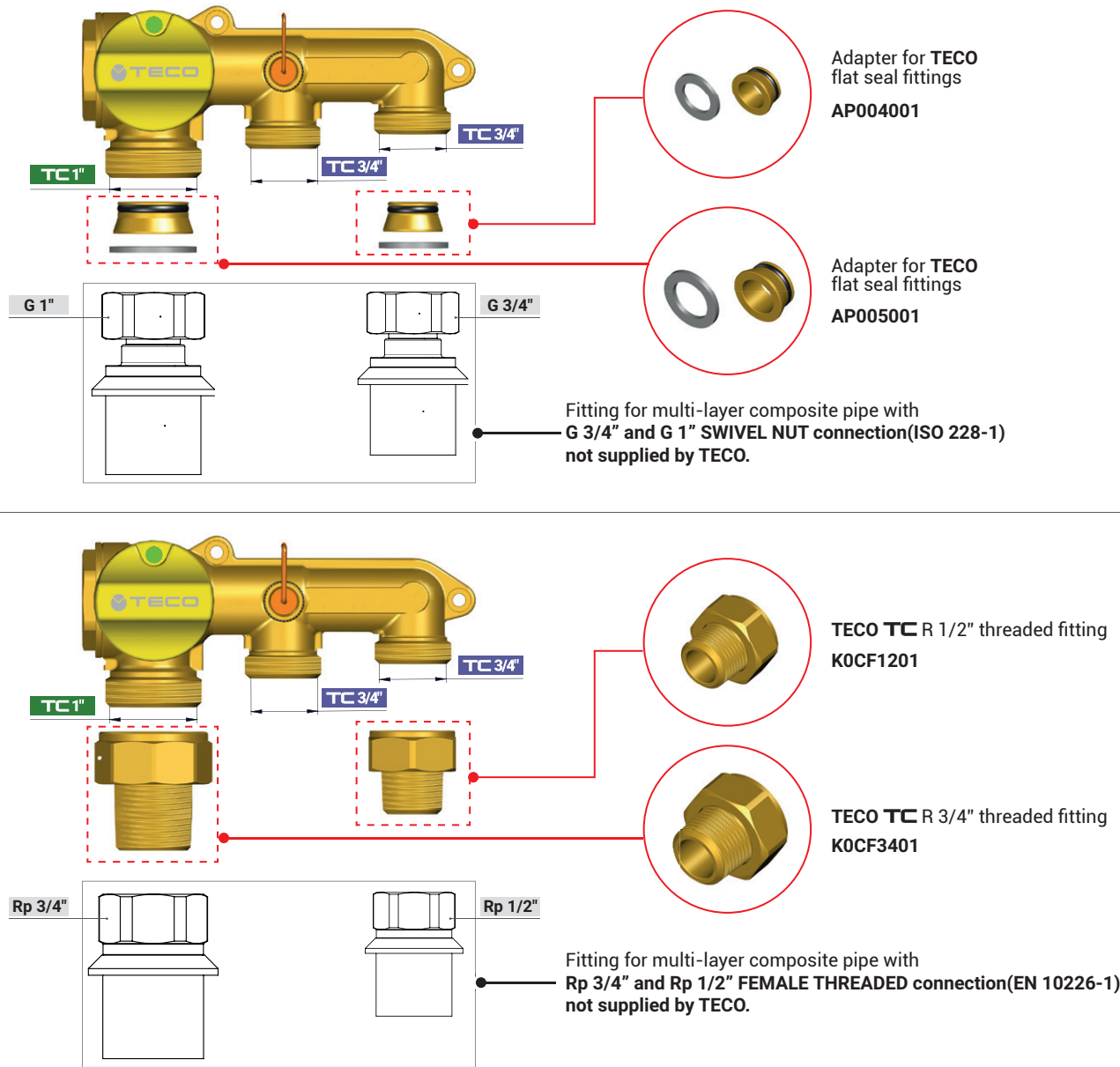
Normative reference: EN 10226-1.

TC 3/4" TC 1" Adapter for flat seal fittings

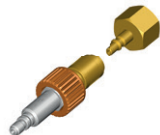


Code	Description	Pack
AP004001	TC 3/4"	10
AP005001	TC 1"	5

Connection for multi-layer composite pipe fittings



Kit for pressure fitting



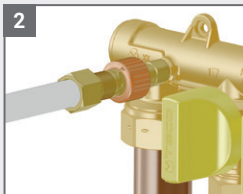
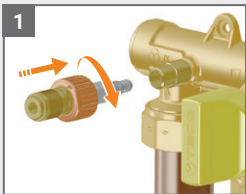
Code	Description	Pack
KP1000	Punto Arancio® pressure fitting and Rp 1/4" threaded quick coupling (EN 10226-1)	5



THE PRESSURE FITTING ALWAYS ON THE FRONT
MAKES THE OPERATION SIMPLE

On K2 series manifolds, system testing is fast and reliable thanks to the Punto Arancio® pressure fitting. A patented double safety valve ensures there is no risk of gas leaking while connecting.

The Punto Arancio® pressure fitting is DVGW certified in accordance with VP 308 and meets all of the regulatory requirements of UNI 7129-2015 (4.1) and UNI 11137 (points 5.1 and 5.7).



TC

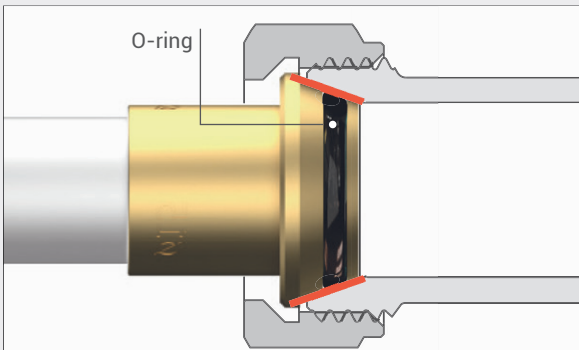
TAPERED SEAL CONNECTIONS

The TECO TC tapered seal has been designed with the aim of ensuring a 100% secure connection and high temperature seal up to 650 °C for a period of 30 minutes in the event of a fire.



THE TAPERED SEAL IS NOT COMPATIBLE
WITH EUROKONUS CONNECTIONS.

O-ring



HTB RESISTANCE
650 °C - 30 minutes (EN 1775)

K2 AND SK METAL BOX MANIFOLDS

SK



APPLICATIONS

- Suitable for all types of gas as specified in EN 437 and DVGW G260/2013 standards (Methane, Butane, Propane).
- Suitable for installation in masonry constructions (minimum thickness 100 mm).

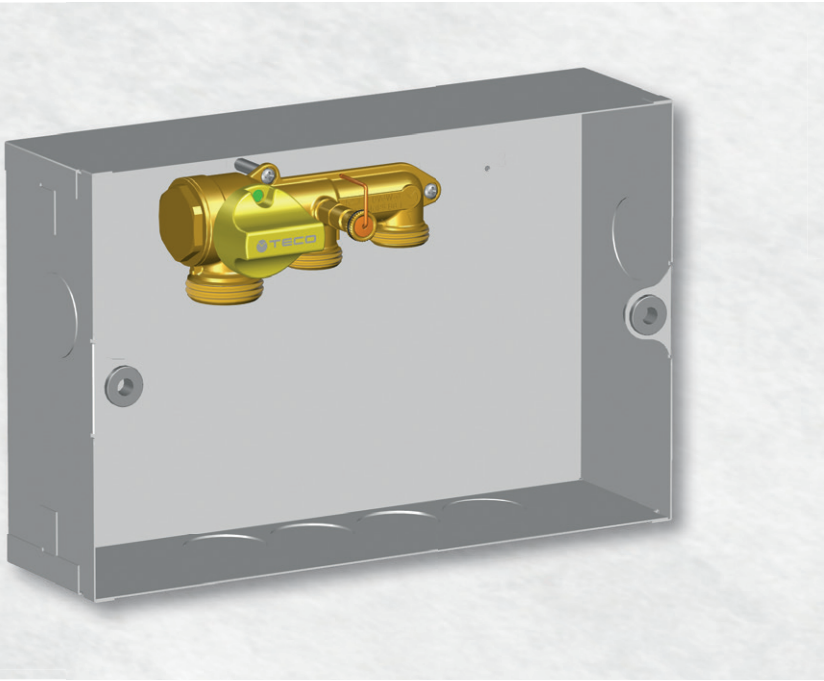


TECHNICAL DATA

Temperature	-20 °C ÷ +60 °C
Pressure	MOP 5 (5 bar)
Connections	TECO TC tapered seal
High temperature resistance	HTB 0.1 bar 650 °C for 30' (B0.1)
Reference standards	DIN EN 331

FEATURES

- **DIN EN 331 certified manifolds can be combined with SK metal box.**
- **Punto Arancio® pressure fitting.**
- Galvanized sheet metal box 300 x 200 x 80 mm.
- **Metal faceplate** painted white with adjustable height.
- **Heat resistance in the event of fire** (HTB).
- **TECO **TC** Tapered Seal connection.**



K2.3 SK Single shut-off manifold with (2 outlets)



Includes:

- 1 manifold with general shut-off and two outlets
- Punto Arancio® pressure fitting
- Fixing kit

Does not include:

- Tapered-seal fittings **TC** (page 118)
- Pressure test kit (page 119)

Kit code	DN	Connections		Pack
		Inlet	Outlet	
K203CC19900	DN20	TC 1"	TC 3/4"	5

See page 118

K2.4 SK Single shut-off manifold with (3 outlets)



Includes:

- 1 manifold with general shut-off and three outlets
- Punto Arancio® pressure fitting
- Fixing kit

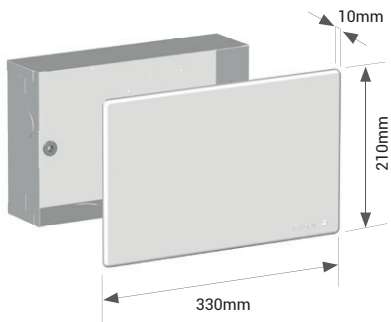
Does not include:

- Tapered-seal fittings **TC** (page 118)
- Pressure test kit (page 119)

Kit code	DN	Connections		Pack
		Inlet	Outlet	
K204DC19900	DN20	TC 1"	TC 3/4"	5

See page 118

SK Metal Box



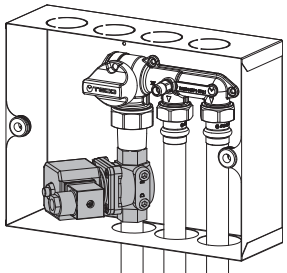
Includes:

- Galvanized sheet metal box 300 x 200 x 80 mm
- Metal faceplate painted white with adjustable height

Kit code	Pack
SK00001011	1

Installation example with solenoid valve

The SK metal box is an ideal solution if a safety solenoid valve needs to be installed.



Spare parts for SK series

See page 177, or visit the website for all product information.




TECO TC Tapered Seal fittings

TC 3/4" TC 1" Bronze soldered fittings

Code	Pipe Ø	Pack
K2CS1201	TC 3/4" ø12mm	10
K2CS1401	TC 3/4" ø14mm	10
K2CS1501	TC 3/4" ø15mm	10
K2CS1601	TC 3/4" ø16mm	10
K2CS1801	TC 3/4" ø18mm	10
K2CS2201	TC 3/4" ø22mm	10
K0CS2202	TC 1" ø22mm	5
K0CS2802	TC 1" ø28mm	5

Normative reference: EN 1254-5.

TC 3/4" TC 1" G-Press® press-fit fittings (Unipress RG®)



G-PRESS
-V- and -M- type crimping tool

Code	Pipe Ø	Pack
K2CP1501	TC 3/4" ø15mm	10
K2CP1801	TC 3/4" ø18mm	10
K2CP2201	TC 3/4" ø22mm	10
K0CP2202	TC 1" ø22mm	5
K0CP2802	TC 1" ø28mm	5

Normative reference: DVGW G 5614.
For copper pipes according to EN 1057 and DVGW GW 392; R290 (ø15x1, ø18x1, ø22x1, ø28x1.5) - R250 (ø22x1, ø28x1, ø28x1.5) - R220 (ø22x1).
For 1.4404 stainless steel pipes according to DIN EN 10088 and DVGW GW 541 (ø22x1.2, ø28x1.2).

TC 3/4" Compression fittings for copper pipes

Code	Pipe Ø	Pack
K0CR1401	TC 3/4" ø14mm	10
K0CR1601	TC 3/4" ø16mm	10
K0CR1801	TC 3/4" ø18mm	10

Normative reference: EN 1254-2.

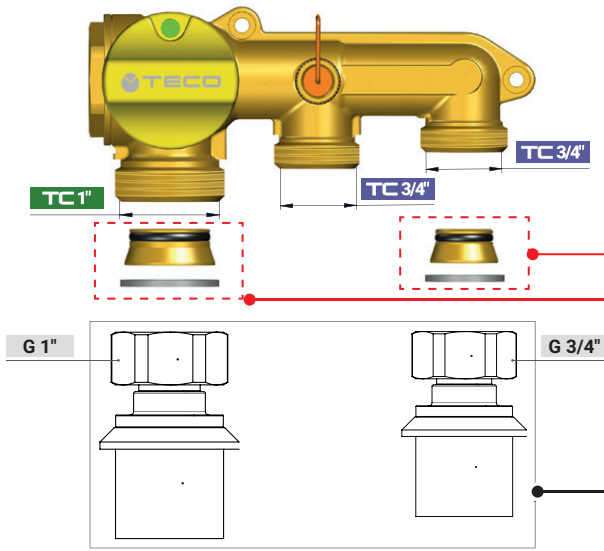
TC 3/4" TC 1" Threaded fittings

Code	Description	Pack
K0CF1201	TC 3/4" R 1/2"	10
K0CF3401	TC 1" R 3/4"	5

Normative reference: EN 10226-1.

TC 3/4" TC 1" Adapter for flat seal fittings

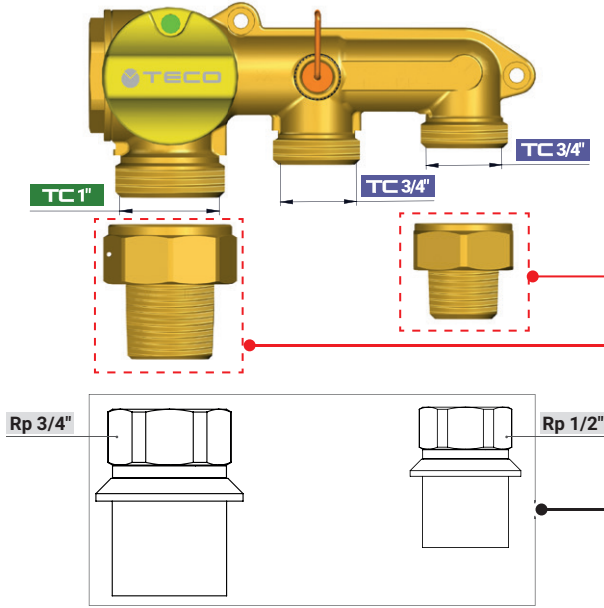
Code	Description	Pack
AP004001	TC 3/4"	10
AP005001	TC 1"	5



Adapter for TECO flat seal fittings
AP004001

Adapter for TECO flat seal fittings
AP005001

Fitting for multi-layer composite pipe with G 3/4" and G 1" SWIVEL NUT connection (ISO 228-1) not supplied by TECO.




TECO TC R 1/2" threaded fitting
K0CF1201

TECO TC R 3/4" threaded fitting
K0CF3401

Fitting for multi-layer composite pipe with Rp 3/4" and Rp 1/2" FEMALE THREADED connection (EN 10226-1) not supplied by TECO.

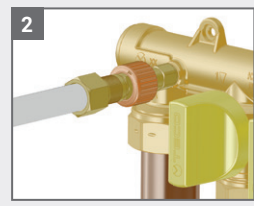
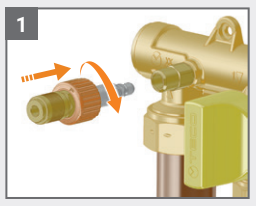
Kit for pressure fitting

Code	Description	Pack
KP1000	Punto Arancio® pressure fitting and Rp 1/4" threaded quick coupling (EN 10226-1)	5



THE PRESSURE FITTING ALWAYS ON THE FRONT MAKES THE OPERATION SIMPLE

On K2 series manifolds, system testing is fast and reliable thanks to the Punto Arancio® pressure fitting. A patented double safety valve ensures there is no risk of gas leaking while connecting the pressure gauge to measure the pressure.

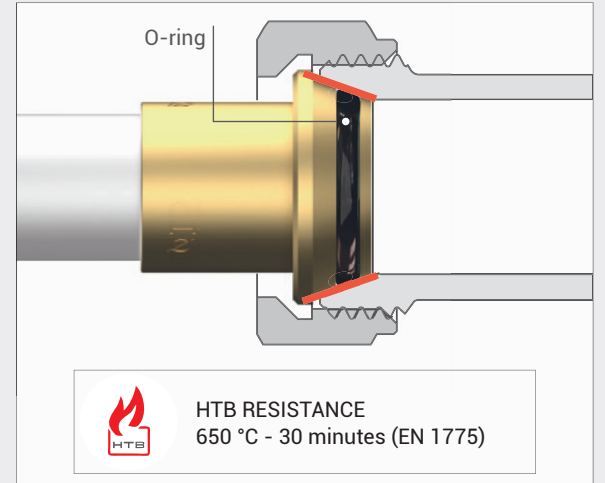



The Punto Arancio® pressure fitting is DVGW certified in accordance with VP 308 and meets all of the regulatory requirements of UNI 7129-2015 (4.1) and UNI 11137 (points 5.1 and 5.7).

TC


TAPERED SEAL CONNECTIONS

Every device in the K2 range is connected using a TECO TC Tapered Seal. This was designed to offer a 100% secure connection and ensure a high temperature seal up to HTB 650 °C for 30 minutes in the event of a fire.






THE TAPERED SEAL IS NOT COMPATIBLE WITH EUROKONUS CONNECTIONS.



HTB RESISTANCE
650 °C - 30 minutes (EN 1775)

118 

119

K2 SERIES