

K2.2

TWO-PORT MULTIPLE SHUT-OFF GAS MANIFOLD

Data sheet
MCTW019.00 - 05/2019



- K2.2 compact distribution manifold
- Shut-off ball valve for each outlet with open/closed indication
- With flush-mounting and accessible Sandwich box
- Connections with sheath that is gas-tight with respect to the wall and provide ventilation to the outside
- TECO Tapered Seal connection: heat resistant in the event of fire (HTB)
- The faceplates allow full access to the manifold
- The faceplate Design is suitable for exposed installation
- Punto Arancio® pressure fitting



Material					
Body	Sandwich Box	Balls	Seats	Handle	Faceplates
Brass CW617	ABS	Brass chromed	NBR	Polyamide	ABS

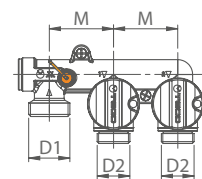
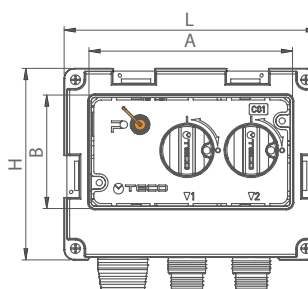
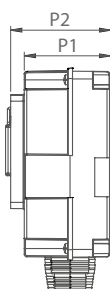
TECHNICAL SPECIFICATIONS

Connections	Working pressure	Temperature	High temperature resistance	Standard and certification
TAPERED SEAL and ISO 228 M thread	MOP 5	- 20 °C + 60 °C	[B01] 0,1 bar 650°C for 30min	DIN EN 331 DVGW

VERSIONS AND CODES

2-port multiple shut-off gas manifold*

C01 Compatible faceplate



Code	DN	D1	D2	M	L	H	P1	P2	A	B	Faceplates	Pack
K202CC10100	20	TC1"	TC3/4"	52	205	155	70	83	165	92	C01	5

* Includes: fixing bracket, site protection cover. Does not include: faceplate and fittings, punto arancio kit.

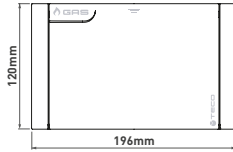
TECO Srl
Via Sandro Pertini, 39/41 - Zona industriale Noccole, 25050 Provaglio d'Iseo (BS)

+39 030 6850510 | +39 030 6850555
info@tecosrl.it | www.tecosrl.it



FACEPLATES

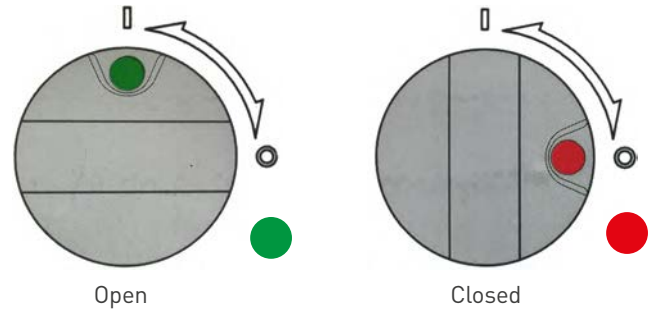
C01



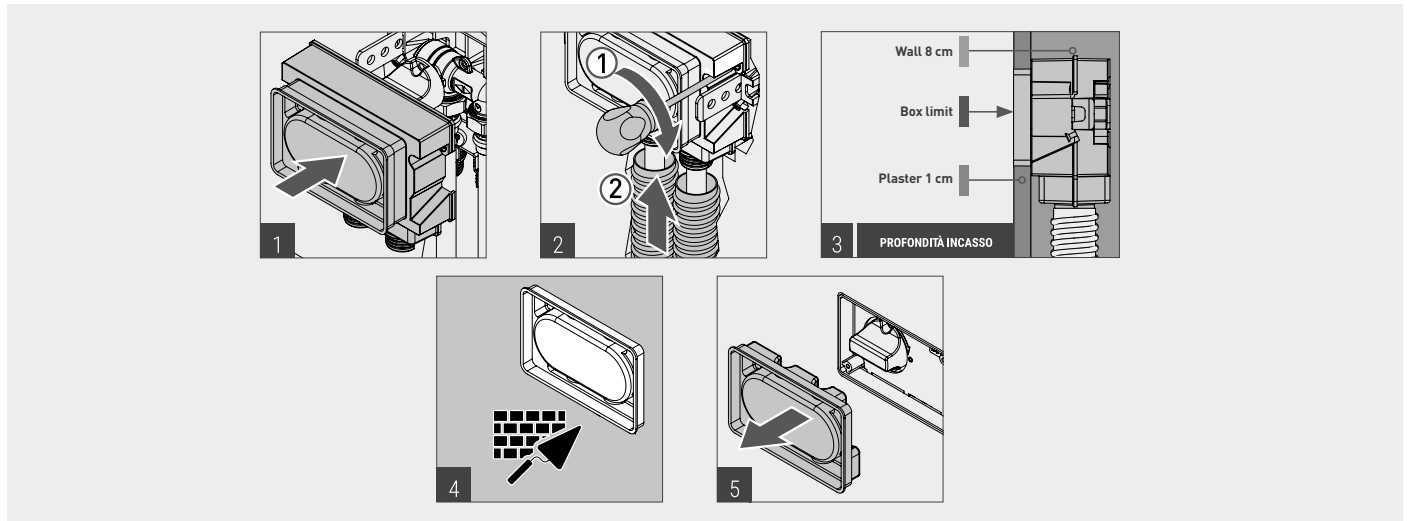
Code	Finish	Pack
K7PL0001	White	5
K7PL0002	Silver	1
K7PL0003	Black Soft Touch	1

OPERATION AND TECHNOLOGIES

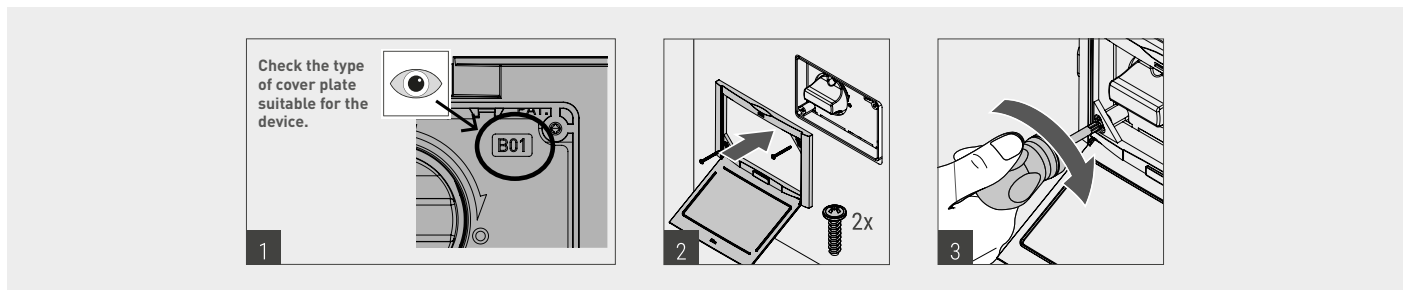
K2.2 valves have a plastic handle for opening and closing. The open/close position is indicated by the color showed by the turning of the handle. Green means open, red means close.



MOUNTING OF THE BOX

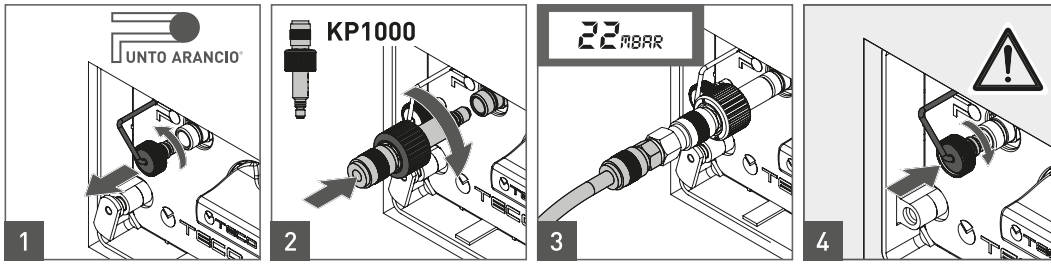


APPLICATION OF THE EXTERNAL COVERING PLATE



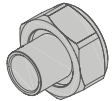
TIGHTNESS TEST

The test of the gas system has to be done acc.to UNI 7129-1 (5.1).

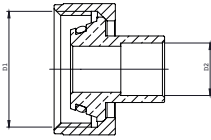


TC CONNECTION FITTINGS

Bronze soldered fittings



Fitting for soldered copper pipe connection that complies with EN 1254-5

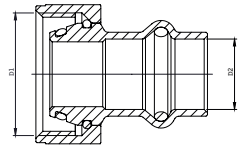


Code	D1 ISO228-1	D2	Pack
K2CS1201	TC 3/4"	ø12mm	10
K2CS1401	TC 3/4"	ø14mm	10
K2CS1501	TC 3/4"	ø15mm	10
K2CS1601	TC 3/4"	ø16mm	10
K2CS1801	TC 3/4"	ø18mm	10
K2CS2201	TC 3/4"	ø22mm	10
K0CS2202	TC 1"	ø22mm	5
K0CS2802	TC 1"	ø28mm	5

UNIPRESS® RG press-fit fitting

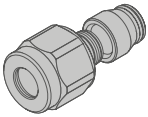


Fitting for press-fit copper pipe connection that complies with DVGW G5614 and UNI 11065.

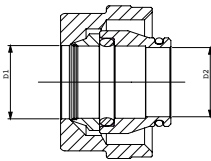


Code	D1 ISO228-1	D2	Pack
K2CP1501	TC 3/4"	ø15mm	10
K2CP1801	TC 3/4"	ø18mm	10
K2CP2201	TC 3/4"	ø22mm	10
K0CP2202	1"	ø22mm	5
K0CP2802	1"	ø28mm	5

Compression fitting

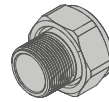


Compression fitting for copper pipe connection that complies with EN 1254-2

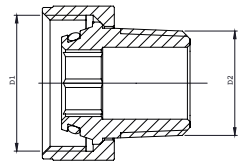


Code	D1 ISO228-1	D2	Pack
K0CR1401	TC 3/4"	ø14mm	10
K0CR1601	TC 3/4"	ø16mm	10
K0CR1801	TC 3/4"	ø18mm	10

Threaded fitting



Fitting for threaded connection that complies with EN 10226-1.



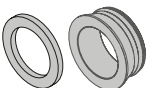
Code	D1 ISO228-1	D2 EN 1254-5	Pack
K0CF1201	TC 3/4"	1/2"	10
K0CF3401	TC 1"	3/4"	5



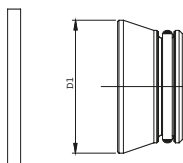
For multi-layer composite systems, the UNI 11344 standard permits the use of fittings provided by the pipe-fitting system manufacturer. Therefore, there are two possible solutions.

- TP** flat seal: Adapter to convert a tapered seal to a flat seal with gasket. Compatible with all fittings with an ISO228 swivel nut.
- F** threaded fitting: Threaded fitting + female press-fit fitting for multi-layer composite pipes.

Adapter for flat seal fittings



Adapter for connecting to all types of fittings with a FLAT SEAL with nut and gasket



Code	D1 ISO228-1	Pack
AP004001	TC 3/4"	10
AP005001	TC 1"	5

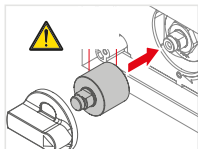
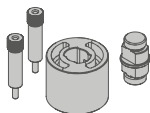
TECO Srl
Via Sandro Pertini, 39/41 - Zona industriale Noccole, 25050 Provaglio d'Iseo (BS)

+39 030 6850510 | +39 030 6850555
info@tecosrl.it | www.tecosrl.it



ACCESSORIES

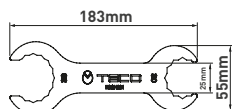
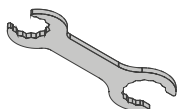
Modular extension kit 23mm



i SEVERAL EXTENSION KITS CAN BE APPLIED TO THE SAME VALVE

Code	Pack
KPR0001	1

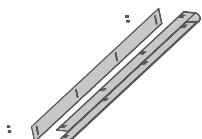
Installation spanner



i AIDS INSTALLATION AND MAINTENANCE OF K2 PRODUCTS.

Code		Pack
K0CH001	SW 30 - SW 38 spanner	1

Modular ducting for laying pipes in chases outside the building



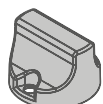
Serviceable metal ducting for laying pipes in chases outside the building. + galvanized sheet metal duct + cover complete with screws

Dimensions:
H750 x L50 mm x P70mm

Code	Pack
KA00K00001	10

SPARE PARTS

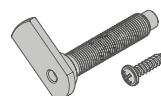
Handle



A01 *K2.0 SPARE PARTS (2009 -2017 PRODUCTION)

Code	Pack
K7MN0001	1
K2MN0001*	1

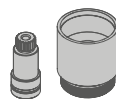
Faceplate adjustment kit **C01**



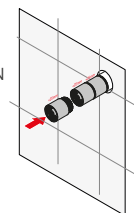
Adjustment kit (20mm)
pin + screws + o-ring (x2)

Code	Pack
KRPL0003	1

Modular extension for 164K version 25mm

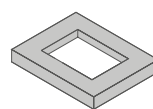


SEVERAL EXTENSION KITS CAN BE APPLIED TO THE SAME VALVE



Code	L (mm)	Pack
I4095000	23	20

Maintenance frame



Dimensions
150x100x20 mm **B01**
215x160x20 mm **C01**
250x160x20 mm **D01**

i THE MAINTENANCE FRAME IS USED WHEN THE BOX IS INSTALLED INCORRECTLY AND PROTRUDES FROM THE WALL.

Code		Pack
KRPL0004	B01 COMPATIBLE	1
KRPL0002	B01 COMPATIBLE	1
KRPL0005	B01 COMPATIBLE	1

ITEM SPECIFICATIONS

K2.2: Flush-mounting gas manifold

Manifold with two outlet pressure fittings, complete with EN331 ball valves on the outlets and Punto Arancio pressure fitting on the body. Inlet with 1" tapered seal and 3/4" outlets that comply with DIN 3439. The kit includes a accessible sandwich box, which is gas-tight with ventilation to the environment and sealed sheath connections. Brass body. Brackets and protection covers included. Opens and closes by operating the handle, complete with "open/closed" indicator, manually openable faceplate available in three colours.

Minimum temperature -20°C

Maximum temperature 60°C.

MOP 5

The connections are certified and guaranteed to seal at high temperature HTB 650°C x 30'.

